

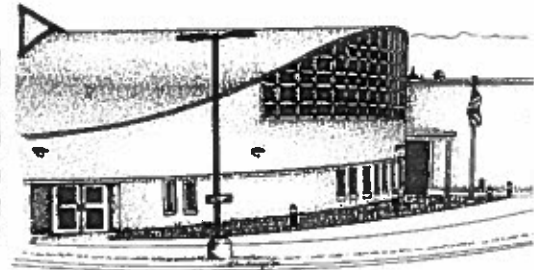
# Putnam Valley Central School District Adopted Budget 2015-2016



*Putnam Valley Elementary School*



*Putnam Valley Middle School*



*Putnam Valley High School*

04/09/2015

# Table of Contents

<b>Budget Summary</b>	<b>A</b>	<b>Expenditures:</b>	
<b>Revenues:</b>			
General Fund Revenues	1	Special Apportionment Programs	
State Aid Detail	2	Contractual	12
		Tuitions	12
<b>Expenditures:</b>		Materials & Supplies	12
<b>General Support</b>		BOCES Services	12
Board of Education	3	School Libraries	13
Central Administration	3	Computer Education	13
Business Administration, Auditing, Treasurer	4	Guidance	14
Tax Collection	4	Health Services	14
Legal, Personnel, Public Information	5	Psychological Services	14
Operation of Plant	6	Pupil Personnel Services	14
Maintenance of Plant	7	Co-Curricular Activities	15
Special Items	8	Interscholastic Athletics	15
<b>Instruction</b>		<b>Pupil Transportation</b>	16
Supervision	9		
Instructional Improvement	9	<b>Undistributed</b>	
Teaching-Regular School		Employee Benefits	17
Instructional Salaries K-12	10	Interfund Transfers	17
Contractual	10	Debt Service	17
Tuitions	10		
Materials & Supplies	10	<b>Three Component Budget Comparison</b>	18
Textbooks	11		
BOCES Services	11		

## Putnam Valley Central School District -Adopted Budget Summary 2015-16

REVENUES	BUDGET 2014-15	ADOPTED 2015-16	BUDGET CHANGES	Percent Differences
Appropriated Fund Balance	1,179,068	994,632	-184,436	-15.64%
Real Property Tax Levy	36,125,964	35,944,964	-181,000	-0.50%
Local Non-Tax Sources	1,012,300	841,000	-171,300	-16.92%
State & Federal Sources	9,837,815	10,195,323	357,508	3.63%
<b>Total</b>	<b>48,155,147</b>	<b>47,975,919</b>	<b>-179,228</b>	<b>-0.37%</b>

EXPENDITURES		BUDGET 2014-15	ADOPTED 2015-16	ADOPTED			BUDGET CHANGES	Percent Differences
				Administration 2015-16	Instruction 2015-16	Capital 2015-16		
<b>GENERAL SUPPORT</b>								
A1010 - A1060 Board of Education		45,367	49,970	49,970	0	0	4,603	10.15%
A1240 Central Administration		365,219	377,008	377,008	0	0	11,789	3.23%
A1310 - A1380 Finance		566,661	551,874	551,874	0	0	-14,787	-2.61%
A1420 - A1480 Staff		208,176	232,773	232,773	0	0	24,597	11.82%
A1620 - A1680 Central Services		2,379,070	2,439,162	0	0	2,439,162	60,092	2.53%
A1910 - A1980 Special Items		558,187	683,623	633,623	0	50,000	125,436	22.47%
<b>Total</b>		<b>4,122,680</b>	<b>4,334,410</b>	<b>1,845,248</b>	<b>0</b>	<b>2,489,162</b>	<b>211,730</b>	<b>5.14%</b>
<b>INSTRUCTION</b>								
A2070 Instructional Improvement		1,836,740	1,954,892	1,779,532	175,360	0	118,152	6.43%
A2110 Teaching: Regular School		13,127,096	13,473,694	0	13,473,694	0	346,598	2.64%
A2250 Special Apportionment Programs		7,335,233	7,630,677	241,250	7,389,427	0	295,444	4.03%
A2600 Instructional Media		1,082,123	1,162,152	40,000	1,122,152	0	80,029	7.40%
A2800 Pupil Services		2,573,550	2,694,115	96,803	2,597,312	0	120,565	4.68%
<b>Total</b>		<b>25,954,742</b>	<b>26,915,530</b>	<b>2,157,585</b>	<b>24,757,945</b>	<b>0</b>	<b>960,788</b>	<b>3.70%</b>
<b>TRANSPORTATION</b>								
A5510 Pupil Transportation		2,813,069	2,812,726	0	2,724,726	88,000	-343	-0.01%
<b>UNDISTRIBUTED</b>								
A9010-70 Employee Benefits		12,228,500	11,676,918	995,922	10,056,589	624,407	-551,582	-4.51%
A9789 Debt Service		2,397,288	0	0	0	0	-2,397,288	
A9901 Interfund Transfers		638,868	2,236,335	0	0	2,236,335	1,597,467	250.05%
<b>Total</b>		<b>15,264,656</b>	<b>13,913,253</b>	<b>995,922</b>	<b>10,056,589</b>	<b>2,860,742</b>	<b>-1,351,403</b>	<b>-8.85%</b>
<b>TOTAL: GENERAL FUND</b>		<b>48,155,147</b>	<b>47,975,919</b>	<b>4,998,755</b>	<b>37,539,260</b>	<b>5,437,904</b>	<b>-179,228</b>	<b>-0.37%</b>

GENERAL FUND REVENUES		ACTUAL 2013-14	BUDGET 2014-15	ADOPTED 2015-16	Administration 2015-16	Instruction 2015-16	Capital 2015-16	BUDGET CHANGES	Percent Differences
<b>Revenue CODE</b>	<b>TAX ITEMS</b>								
1001	Real Property Taxes	35,810,854	36,125,964	35,944,964				-181,000	-0.50%
1090	Service Charges on Real Property Taxes	44,000	35,000	35,000					
	Payments in lieu of taxes.	0	0	0					
1120	Non-Property Tax Distribution by Westchester	48,974	0	0					
	<b>CHARGES FOR SERVICES</b>								
1335/1489	Other Charges For Services/Student Fees	214,797	130,000	170,000				40,000	30.77%
1489	Field Rentals	0	0	0					
2231	Tuition: Other School Districts (Foster Care & Special Education Placements)	510,175	300,000	300,000					
	<b>Total: Charges For Services</b>	<b>724,972</b>	<b>430,000</b>	<b>470,000</b>				<b>40,000</b>	<b>9.30%</b>
	<b>USE OF MONEY AND PROPERTY</b>								
2401	Interest And Earnings	34,446	40,000	25,000				-15,000	-37.50%
2410 & 2412	Rental Of Real Property:	0	0	0					
2450	Commissions	2,327	2,500	9				-2,500	-41.18%
	<b>Total: Use Of Money &amp; Property</b>	<b>36,773</b>	<b>42,500</b>	<b>25,000</b>				<b>-17,500</b>	<b>-41.18%</b>
	<b>MISCELLANEOUS</b>								
2680/2701	Insurance Recoveries/Refund Prior Yr. BOCES	249,713	75,000	191,000				116,000	154.67%
2703/2705	Refunds of Prior Year Expenditures-Other	164,540	100,000	100,000				0	0%
2770	Other Unclassified Revenue: ERATES	63,712	20,000	20,000				0	0%
	<b>Total: Miscellaneous</b>	<b>477,965</b>	<b>195,000</b>	<b>311,000</b>				<b>116,000</b>	<b>59.49%</b>
	<b>STATE SOURCES</b>								
3101	General Formula Aid	8,545,599	8,882,978	9,052,475				169,497	1.91%
3103	BoCES Aid	1,243,359	1,339,995	1,222,293				-117,702	-8.78%
3262	Instructional Materials Aid	171,017	168,421	162,822				-5,599	-3.32%
3289	State Aid Adjustments: GAP Elimination Adjustment	-834,475	-553,579	-342,267				211,312	
3104/3289	Homeless and Chapter 44721/66	210,982	0	100,000				100,000	
	<b>Total State Sources</b>	<b>9,336,482</b>	<b>9,837,815</b>	<b>10,195,323</b>				<b>357,508</b>	<b>3.63%</b>
	<b>* GENERAL FUND REVENUES</b>	<b>46,480,111</b>	<b>46,666,279</b>	<b>46,981,287</b>				<b>315,008</b>	
	<b>INTERFUND TRANSFERS</b>								
5059	Transfer from Debt Service	1,772,970	309,800	0				-309,800	-100.00%
	<b>Total: Interfund Transfers</b>	<b>1,772,970</b>	<b>309,800</b>	<b>0</b>				<b>-309,800</b>	<b>-100.00%</b>
	<b>** SUBTOTAL:</b>								
	<b>** GENERAL FUND REVENUES</b>	<b>48,253,081</b>	<b>46,976,479</b>	<b>46,981,287</b>				<b>5,286</b>	<b>0.01%</b>
	<b>APPROPRIATED RESERVES</b>								
599	Appropriated Fund Balance	0	750,000	700,000				-50,000	-6.67%
1040	Appropriation of Reserve For Retirement Contribution	0	145,000	294,632				129,632	78.56%
1040	Appropriation of Reserve	0	264,068	0				-264,068	
	<b>*** GRAND TOTAL:</b>								
	<b>*** GENERAL FUND REVENUES</b>	<b>48,253,081</b>	<b>48,155,147</b>	<b>47,975,919</b>				<b>-179,228</b>	<b>-0.37%</b>

GENERAL FUND REVENUES		ACTUAL 2013-14	BUDGET 2014-15	ADOPTED 2015-16		BUDGET CHANGES	Percent Differences
STATE SOURCES: STATE AID DETAIL							
BASIC FORMULA			Enacted State Budget	Estimated Legislative Budget	Governor's Proposal	Differences State Budget Gov Proposal	
Foundation Aid	4,010,356	4,802,600	4,831,852	4,831,852	0	29,252	
Full Day Kindergarten Conversion Aid	225,588	0	0	0	0	0	
Special Chapter /Homeless Aid	0	0	100,000	0	100,000	100,000	
Building Aid	1,085,487	1,043,501	1,193,810	1,193,810	0	150,309	
Transportation Aid	1,417,249	1,600,106	1,605,242	1,605,242	0	5,136	
High Cost Aid, Public & Private School Excess Cost Aids	1,423,009	511,210	496,010	496,010	0	-15,200	
Instructional Materials Aid	169,564	168,421	162,822	162,822	0	-5,599	
High Tax Aid	925,561	925,561	925,561	925,561	0	0	
Boces Services Aid (Net of Aid Adjustment Due to BOCES Refunds)	914,143	1,339,995	1,222,293	1,402,601	-180,308	-117,702	
State Aid Adjustments: GAP Elimination Adjustment	-834,475	-551,579	-342,267	-342,267	0	211,312	
Sub-Total: State Sources	9,336,482	9,837,815	10,195,323	10,275,631	-80,308	357,508	
<b>TOTAL: STATE SOURCES</b>	<b>9,336,482</b>	<b>9,837,815</b>	<b>10,195,323</b>	<b>10,275,631</b>	<b>-80,308</b>	<b>357,508</b>	<b>3.63%</b>

GENERAL SUPPORT		ACTUAL	BUDGET	ADOPTED	Administration	Instruction	Capital	BUDGET	Percent
CODE		2013-14	2014-15	2015-16	2015-16	2015-16	2015-16	CHANGES	Differences
A1010	<b>BOARD OF EDUCATION</b>								
A1010.4	<b>CONTRACTUAL EXPENSES</b>								
	Mandated Training Workshops, Postage, Printing, & Miscellaneous Expenses	5,822	6,000	6,000	6,000				
	<b>MATERIALS &amp; SUPPLIES</b>								
A1010.45	General Office Supplies	3,068	2,802	3,000	3,000			198	7.07%
A1010***	<b>Total: Board of Education</b>	8,890	8,802	9,000	9,000			198	2.25%
A1040	<b>DISTRICT CLERK</b>								
A1040.16	District Clerk Salary #1	11,670	11,670	11,670	11,670				
A1040.45	Material & Supplies; Postage	348	1,395	800	800			-595	-42.65%
A1040.49	BOCES; BOARD DOCS	0	0	4,500	4,500				
A1040***	<b>Total: District Clerk</b>	12,018	13,065	16,970	16,970			3,905	29.89%
	#1 NOTES: The District Clerk's salary for next year has not been determined at this time.								
A1060	<b>DISTRICT MEETINGS</b>								
A1060.16	Non-Instructional Salaries	4,276	0	0	0				
	<b>CONTRACTUAL EXPENSES</b>								
A1060.4	Legal Advertisements, Printing, etc.	13,980	20,000	0	0			-20,000	
	Voting Expenses	0	0	2,000	2,000			2,000	
	Election Staff	0	0	10,000	10,000			10,000	
A1060.4	<b>Total: Contractual</b>	13,980	20,000	16,000	16,000			-4,000	-20.00%
A1060.49	BOCES; BOARD DOCS	0	0	4,500	4,500			4,500	
A1060.45	Materials & Supplies	225	3,500	3,500	3,500				
A1060***	<b>Total: District Meetings</b>	18,481	23,500	24,000	24,000			500	2.13%
A1099	<b>TOTAL: BOARD OF EDUCATION</b>	39,389	45,367	49,970	49,970			4,683	10.15%
	<b>CENTRAL ADMINISTRATION</b>								
A1240	<b>CHIEF SCHOOL ADMINISTRATOR</b>								
A1240.157	SALARIES: INSTRUCTIONAL #2 Superintendent of Schools	228,727	221,500	240,000	240,000			18,500	8.35%
A1240.165	SALARIES: NON-INSTRUCTIONAL Secretarial / Clerical (1.5FTE) Includes Overtime / Substitutes	96,491	114,353	107,442	107,442			-6,711	-5.87%
	<b>CONTRACTUAL EXPENSES: Includes expenses such as</b>								
	Conferences, Workshops & In-District Travel	9,189	23,600	23,600	23,600			0	0.00%
	Association Dues & Memberships	0	0	0	0				
	Consultants	0	0	0	0				
	Equipment Repair and Service Contracts	0	0	0	0				
A1240.4	<b>Total: Contractual</b>	9,189	23,600	23,600	23,600				
A1240.45	<b>MATERIALS &amp; SUPPLIES</b>	2,218	5,766	5,766	5,766			0	0.00%
A1299	<b>TOTAL: CENTRAL ADMINISTRATION</b>	338,625	345,219	377,008	377,008			11,789	3.23%
	#2 NOTES: Administrative salaries for next year have not been determined at this time.								

		ACTUAL 2013-14	BUDGET 2014-15	ADOPTED 2015-16	Administration 2015-16	Instruction 2015-16	Capital 2015-16	BUDGET CHANGES	Percent Differences
A1300	<b>FINANCE</b>								
A1310	<b>BUSINESS ADMINISTRATION</b>								
	<b>SALARIES:</b>								
A1310.157	<b>TREASURER</b>	189,755	125,000	0	0			-125,000	-100.00%
A1310.160	Secretariat / Clerical (4.5 FTE)	268,764	285,000	275,000	275,000			-10,000	-3.51%
A1310.4	<b>CONTRACTUAL EXPENSES:</b> Includes expenses such as: Advertising, TPA for tax exempt annuities, financial advisor Conferences, Workshops, In-District Mileage Professional Association Memberships Consultant Programmer Services Equipment Repair and Repair Parts Computer Equipment & Software Maintenance	8,107	24,440	14,400	14,400			-10,040	-41.08%
	<b>BOCES SERVICES</b>								
	State Aid Analysis-SWB-Questar	3,050	3,120	3,483	3,483			363	11.63%
	Finance Manager	4,853	4,176	7,400	7,400			3,224	
A1320.490	<b>Total Contractual/BOCES</b>	16,010	31,736	25,283	25,283				
A1320.45	<b>MATERIALS &amp; SUPPLIES</b>	4,537	4,836	4,836	4,836				
A1310***	<b>TOTAL: Business Administration</b> #1 NOTES: Administrative salaries for next year have not been determined at this time.	479,066	446,572	305,119	305,119			-141,453	-31.68%
A1320	<b>AUDITING</b>								
A1320.160	SALARIES: Internal Claims Auditor	106	8,500	0	0			-8,500	
A1320.4	CONTRACTUAL EXPENSES: External & Internal Auditing Services	91,159	81,209	92,000	92,000			10,800	13.30%
A1320***	<b>Total Auditing</b>	91,265	89,709	92,000	92,000			2,300	2.56%
A1325.16	<b>TREASURER</b>	0	0	126,500	126,500			126,500	
A1325.4	CONTRACTUAL EXPENSES: Includes Advertising, Mileage Expenses, Equipment Repair	0	390	7,500	7,500			7,110	1823.08%
A1325.45	<b>MATERIALS &amp; SUPPLIES</b>	0	298	2,500	2,500			2,202	738.93%
A1325***	<b>TOTAL: Treasurer</b>	0	688	136,500	136,500			135,812	19740.12%
A1330	<b>TAX COLLECTION</b>								
A1330.160	Salaries: Tax Collector Assistant #2	13,848	14,938	3,500	3,500			-11,438	-76.57%
A1330.4	CONTRACTUAL EXPENSES: Includes Putnam County Real Property Tax Services #3 Postage Tax Collection Software Updates Printing	10,264	11,655	11,655	11,655			0	0.00%
A1330.45	<b>MATERIALS &amp; SUPPLIES</b>	1,018	1,350	1,350	1,350			-8	-0.59%
A1330***	<b>TOTAL: Tax Collection #4</b>	25,130	27,951	16,505	16,505			-11,446	-40.95%
A1300.4	<b>FISCAL AGENT FEES</b>	0	1,750	1,750	1,750				
A1399	<b>TOTAL FINANCE #5</b> #2 NOTES: Part time assistant to the tax collector #3 NOTES: Putnam County provides tax rolls and tax data for District operated tax collection services. #4 NOTES: District Tax Collection Service expenses are completely paid for by service charges. There is no net cost to the District for Tax Collection. #5 NOTES: FINANCE encompasses Business Administration, Auditing, Treasurer, and Tax Collector functions.	595,452	566,661	551,874	551,874			-14,787	-2.61%

		ACTUAL 2013-14	PROPOSED 2014-15	ADOPTED 2015-16	Administration 2015-16	Instruction 2015-16	Capital 2015-16	BUDGET CHANGES	Percent Differences
A1400	LEGAL								
A1420	CONTRACTUAL EXPENSES								
A1420.4	General Counsel Services	53,075	100,000	100,000	100,000				
<b>A1420***</b>	<b>Total Legal</b>	<b>53,075</b>	<b>100,000</b>	<b>100,000</b>	<b>100,000</b>			<b>0</b>	<b>0.00%</b>
A1430	PERSONNEL								
A1430.15	Assistant Superintendent	0	43,750	43,750	43,750				
A1430.160	Clerical Includes Overtime & Substitutes	0	20,000	20,950	20,950			950	4.75%
<b>A1430**</b>	<b>CONTRACTUAL EXPENSES</b>	<b>0</b>	<b>6,000</b>	<b>8,000</b>	<b>8,000</b>			<b>2,000</b>	<b>33.33%</b>
A1430.49#1	BOCES SERVICES; #1								
6160	Employees' Assistance Program (EAP)	9,116	6,068	6,160	6,160			92	
6020	Contract Analysis Service	5,667	2,694	2,700	2,700			6	
	Aesop Substitute Service/My Learning Plan (new 2015-16)	1,080	9,000	16,500	16,500			7,500	83.33%
611	Finance Manager/Board Docs	17,732	4,176	7,400	7,400			3,224	77.20%
<b>A1430.49</b>	<b>Total BOCES</b>	<b>33,515</b>	<b>21,938</b>	<b>32,760</b>	<b>32,760</b>			<b>10,822</b>	
<b>A1430***</b>	<b>Total Personnel</b>	<b>33,515</b>	<b>91,688</b>	<b>105,460</b>	<b>105,460</b>			<b>13,772</b>	<b>15.02%</b>
<p>#1 NOTES: Services through BOCES are eligible for BOCES Aid at 50% on average.</p>									
BUDGET	STAFF								
A1480	PUBLIC INFORMATION AND SERVICES #2								
A1480.160	PERSONNEL EXPENSES (.5 FTE)	15,923	16,488	20,313	20,313			3,825	23.20%
A1480.4	CONTRACTUAL SERVICES	6,959	9	7,000	7,000			7,000	
<b>A1480***</b>	<b>Total Public Information and Services</b>	<b>22,873</b>	<b>16,488</b>	<b>27,313</b>	<b>27,313</b>			<b>10,825</b>	<b>65.65%</b>
<b>A1499</b>	<b>TOTAL STAFF #3</b>	<b>109,463</b>	<b>208,176</b>	<b>232,773</b>	<b>232,773</b>			<b>24,597</b>	<b>11.82%</b>
<p>#2 NOTES: The district publishes A BUDGET NEWSLETTER.</p>									
<p>#3 NOTES: The STAFF functions include expenditures for attorney services, personnel administration, and public information services.</p>									



CODE		ACTUAL 2013-14	BUDGET 2014-15	ADOPTED 2015-16	Administration 2015-16	Instruction 2015-16	Capital 2015-16	BUDGET CHANGES	Percent Differences
A1600	<b>CENTRAL SERVICES</b>								
A1620	<b>OPERATION OF PLANT</b>								
A1620.165	Director of Facilities, Technology and Transportation #1 (.33 FTE) Operations Office Clerical	66,809 0	40,000 69,862	40,000 69,862			40,000 69,862		0.00%
A1620.164	<b>SALARIES: Custodians / Cleaners / Grounds keepers #2</b>								
	High School (5.0 FTE) Includes HS Groundskeeper/Custodial Worker	267,029	270,234	260,000			260,000	-10,234	
	Middle School (3.00 FTE)	135,466	139,044	145,000			145,000	5,956	
	Elementary School (4.00 FTE)	196,448	199,956	209,000			209,000	9,044	
	Grounds Keeping (District Wide 1.0 FTE)	62,395	62,395	62,395			62,395		
	Summer Workers	0	25,000	28,000			28,000	3,000	12.00%
A1620.168	Overtime: #3	21,210	54,000	56,000			56,000	2,000	3.70%
9902/9904	Outside Groups: Custodial overtime for outside groups reim to district.	21,550	0	15,000			15,000	15,000	
	Overtime for Reg Cleaning/Groundskeep/Security								
9925	Night Differential	8,000	8,000	8,000			8,000	0	100.00%
9909	Summer Work	4,958	0	3,000			3,000	3,000	
9901	Snow and Ice Removal	5,818	4,000	7,500			7,500	3,500	100.00%
9903	Sick	3,329	0	0			0	0	
9917/9918	Substitutes						0	0	100.00%
A1620.169	Substitutes: Vacation and Illness Coverage	50,032	60,500	60,500			60,500		
A1620.16*	<b>Total: Non Instructional Salaries</b>	<b>843,044</b>	<b>932,991</b>	<b>964,257</b>			<b>964,257</b>	<b>31,266</b>	<b>3.35%</b>
	<b>#1 NOTES: The responsibilities of the Director of Facilities, Technology and transportation are distributed among Operations &amp; Maintenance Computer Education and Transportation.</b>								
	<b>#2 NOTES: Salaries for custodial staff have not been determined at this time</b>								
	<b>#3 NOTES: All custodial overtime incurred by community use of district facilities is fully reimbursed to the district.</b>								
A1620.200	<b>EQUIPMENT</b>	0	38,000	20,000			20,000	-18,000	-47.37%
A1620.4	<b>CONTRACTUAL EXPENSES</b>								
	General Contractual	49,044	21,800	21,800			21,800	0	0.00%
450	Electric (NYSEG)	608,857	375,000	375,000			375,000		
451	Telephones	15,995	70,000	70,000			70,000		
445	Insurance Appraisal Updates/architect	4,465	5,000	5,000			5,000		
452	Fuel Oil - #2 Heating Oil Elementary School Only	145,275	120,000	122,400			122,400	2,400	2.00%
	Fuel Oil & Propane are purchased through New York State Contract								
	The Middle and High Schools use energy efficient and "Green Technology" GEOTHERMAL heating and cooling systems.								
455 / 456 / 462	Water and Sewer Charges; Water Testing	77,334	75,000	75,000			75,000		
	<b>CENTRAL SERVICES</b>								
	<b>OPERATION OF PLANT</b>								
453	Propane Gas	31,106	25,000	25,500			25,500	500	2.00%
466	Safety Compliance: Fire and Safety Inspections	16,916	10,000	10,000			10,000		
454	Rubbish Removal	37,878	40,000	41,000			41,000	1,000	2.50%
A1620.4	<b>TOTAL: CONTRACTUAL EXPENSES</b>	<b>966,879</b>	<b>741,800</b>	<b>745,700</b>			<b>745,700</b>	<b>3,900</b>	<b>0.53%</b>
490	<b>BOCES SERVICES</b>	50,177	0	0					
6980	Safety & Risk Management	0	7,626	7,700			7,700	74	0.97%
6121	Intellipath Regional Telephone Service	0	28,981	29,850			29,850	869	3.00%
6113	Connect-Ed	0	4,001	4,120			4,120	119	2.89%
6282	School Dude	0	4,770	4,912			4,912	142	2.89%
A1620.49	<b>Total:BOCES</b>	<b>50,177</b>	<b>45,378</b>	<b>46,582</b>			<b>46,582</b>	<b>1,205</b>	<b>2.65%</b>
A1620.45	<b>MATERIALS &amp; SUPPLIES</b>	62,061	53,010	54,000			54,000	990	1.87%
	Building Supplies such as floor care products, cleaning materials, and sanitation supplies; paper products, and uniforms.								
A1620	<b>TOTAL: Operation of Plant</b>	<b>1,942,172</b>	<b>1,811,179</b>	<b>1,830,539</b>			<b>1,830,539</b>	<b>19,360</b>	<b>1.07%</b>

CODE		ACTUAL 2013-14	BUDGET 2014-15	ADOPTED 2015-16	Administration 2015-16	Instruction 2015-16	Capital 2015-16	BUDGET CHANGES	Percent Differences
A1621	<b>CENTRAL SERVICES</b>								
A1621	<b>MAINTENANCE OF PLANT</b>								
A1621.164	<b>SALARIES: NON-INSTRUCTIONAL</b>								
	High School / Middle School Campus (1.0 FTE)	81,273	81,611	81,611			81,611		
	Elementary School Campus (1.0 FTE)	67,162	67,162	67,162			67,162		
	Overtime	10,169	15,000	15,000			15,000		
A1621.16	<b>Total: Non Instructional Salaries</b>	158,604	163,773	163,773			163,773	0	0.00%
A1621.4	<b>General Contractual</b>	66,664	3,000	40,000			40,000	37,000	1233.33%
419	Field Maintenance Equipment Rental	2,190	2,000	2,000			2,000		
436	Upkeep of Fire and Security Alarm Systems	8,500	7,000	7,500			7,500	500	
437	Upkeep of Buildings	31,870	26,768	27,000			27,000	232	0.87%
438	Upkeep of Electrical	7,498	15,358	15,358			15,358	0	
431	Upkeep of Grounds and Fields	6,705	23,000	24,000			24,000	1,000	4.35%
432	Upkeep of HVAC / Heat	64,851	95,000	95,000			95,000		
433	Upkeep of Plumbing	16,937	18,000	18,000			18,000		
434	Upkeep of Sewer & Septic Systems	5,228	3,000	5,000			5,000	2,000	
430 / 464 / 465	Upkeep of Equipment: Includes Equipment Maintenance Contracts	78,848	105,000	105,000			105,000		
468	Five Year Capital Plan: Projects will be selected from the Five Year Capital Plan	22,280	50,000	50,000			50,000		
A1621.4	<b>TOTAL: CONTRACTUAL EXPENSES</b>	310,691	348,118	388,850			388,850	48,732	11.70%
A1621.45	<b>MATERIALS AND SUPPLIES</b>	61,867	56,000	56,000			56,000		
	Building maintenance supplies such as plumbing supplies, light bulbs, replacement light fixtures, replacement diffusers, air filters, seed, fertilizers, paint, painting materials, and ceiling tiles.								
A1621***	<b>TOTAL: Maintenance of Plant</b>	531,162	567,891	608,623			608,623	48,732	7.17%
A1699	<b>TOTAL: CENTRAL SERVICES #1</b>	2,473,334	2,379,070	2,439,162			2,439,162	68,092	2.83%

#1 NOTES: CENTRAL SERVICES include both Operations and Maintenance functions.

BUDGET CODE	SPECIAL ITEMS	ACTUAL 2013-14	BUDGET 2014-15	ADOPTED 2015-16	Administration 2015-16	Instruction 2015-16	Capital 2015-16	BUDGET CHANGES	Percent Differences
<b>CONTRACTUAL EXPENSES</b>									
A1910.4	Unallocated Insurance Property & Liability Insurance	189,192	196,900	204,925	204,925			8,025	4.06%
A1920.4	School Association Dues N.Y.S. School Board Association Putnam Westchester School Boards Association National School Boards Association	19,690	16,500	21,350	21,350			4,850	29.39%
A1930.4	Judgments And Claims; Real Property Tax Refunds Payments of small claims made against the district, such as the Small Claims Assessment Reviews and Tax Certioraris.	37,985	72,900	50,000			50,000	-22,900	-31.41%
A1981.490 6990 0010 / 0021	BOCES SERVICES #1 Insurance Management Administrative Charge Capital Budget	24,971 222,550 173,285 428,726	26,386 228,853 16,648 271,887	27,126 365,222 15,089 487,348	27,126 365,222 15,000 487,348			740 136,369 -1,648 135,461	2.80% 59.59% 100.00% 49.82%
A1998	<b>TOTAL SPECIAL ITEMS</b>	667,893	558,187	683,623	633,623		50,000	125,436	22.47%
A1999	<b>TOTAL: GENERAL SUPPORT #2</b>	4,223,856	4,122,608	4,334,410	1,845,338		2,489,162	211,730	5.14%
<p>#1 NOTES: BOCES Risk and Health Insurances Management services coordinate Putnam Valley's participation in self insurance programs in the areas of Health and Medical, Workers' Compensation, and General Liability. BOCES CAPITAL Budget is shared by the Districts in the consortium</p> <p>#2 NOTES: GENERAL SUPPORT #2 is a summary of the Board of Education, Central Administration, Finance, Central Services and Special Items functions.</p>									

INSTRUCTION		ACTUAL	BUDGET	ADOPTED	Administration	Instruction	Capital	BUDGET	Percent
BUDGET	ADMINISTRATION AND IMPROVEMENT	2013-14	2014-15	2015-16	2015-16	2015-16	2015-16	CHANGES	Differences
CODE									
A2020	SUPERVISION								
A2020.157	SALARIES: School Building Administrators #1								
	High School Principal	180,228	175,890	180,092	180,092			4,202	2.39%
	Assistant High School Principal	158,219	154,330	157,988	157,988			3,658	2.37%
	Middle School Principal	178,937	174,625	178,691	178,691			4,066	2.33%
	Assistant Middle School Principal	149,490	148,830	152,488	152,488			3,658	2.46%
	Elementary School Principal	154,009	154,120	162,360	162,360				
	Assistant To The Elementary School Principal	114,048	108,485	108,485	108,485				
A2020.15	TOTAL: INSTRUCTIONAL SALARIES	934,931	916,280	948,104	948,104			23,824	2.60%
	#1 NOTES: Salaries for administrators have not been determined at this time								
A2020.160	SALARIES: NON-INSTRUCTIONAL								
A2020.168	School Office Clerical: HS, MS, ES 7 FTE	432,314	461,310	466,328	466,328			5,018	1.09%
	Clerical Overtime / Substitutes / Receiving	0	41,400	41,400	41,400				
A2020.16	TOTAL: NON INSTRUCTIONAL SALARIES	432,314	502,710	507,728	507,728			5,018	1.00%
	CONTRACTUAL EXPENSES								
400	Photocopying: District Wide	120,791	100,000	0	0			-100,000	
413	District Wide Contractual Expense: School Communications, Postage & Printing	19,318	50,000	50,000	50,000				
412	Teacher Recruitment, Advertising, etc.	0	0	0	0				
410	School Resource Officer: 1.0 FTE; Special Patrol Officer 1.0 FTE	84,660	130,000	132,600	132,600			2,600	2.00%
A2020.4	High School: General Contractual Expenses	639	11,500	11,500	11,500				
	Middle School: General Contractual Expenses	0	3,000	3,000	3,000				
	Elementary School: General Contractual Expenses	0	2,400	2,400	2,400				
A2020.4	Total Contractual	225,408	296,900	299,500	299,500			-97,400	-32.81%
A2020.45	MATERIALS & SUPPLIES								
	Materials & Supplies Include: graduation supplies, report cards, paper, general office supplies, etc.	6,585	7,011	7,200	7,200			189	2.70%
A2020.45	Total: Materials & Supplies	6,585	7,011	7,200	7,200			189	2.70%
A2020.49	BOCES-Xerox IPA (copiers and printing supplies for copiers and printers)	0	0	125,000	125,000			125,000	
A2020***	TOTAL: Supervision	1,599,238	1,722,901	1,779,532	1,779,532			56,631	3.29%
A2070	INSTRUCTIONAL IMPROVEMENT CURRICULUM DEVELOPMENT								
A2070.158	SALARIES: INSTRUCTIONAL								
	Curriculum Development	25,657	35,000	35,000		35,000			
	Clerk / Typist ( 1.0 FTE ); Overtime, Substitutes	0	0	0		0			
A2070.200	EQUIPMENT / DURABLE SUPPLIES	0	0	0		0			
A2070.4	CONTRACTUAL EXPENSES #1	13,854	50,000	50,000		50,000		0	0.00%
	Includes:								
403	Staff Development Courses								
	Mantua Internships	0	0	60,000		60,000		60,000	
415	Travel & Conferences								
446	Consultants								
	Mentoring								
A2070.490	BOCES SERVICES #2								
5040	Consultant Services: Staff Development	18,322	21,979	23,500		23,500		1,521	6.92%
5120	Teacher Center	0	5,000	5,000		5,000			
A2070.49	Total Boces	18,322	26,979	28,500		28,500		1,521	5.64%
A2070.45	MATERIALS & SUPPLIES	147	1,860	1,860		1,860			
A2070***	TOTAL: Curriculum Development	57,186	113,839	175,360		175,360		61,521	54.04%
	#1 NOTES: The curriculum development budget supports all district personnel.								
	#2 NOTES: Services through BOCES are eligible for BOCES Aid at 50% on average.								
A2099	TOTAL: ADMINISTRATION AND IMPROVEMENT	1,654,418	1,834,740	1,954,892	1,779,532	175,360		118,152	6.43%
	NOTE: ADMINISTRATION AND IMPROVEMENT includes the Curriculum Development and School Supervision functions.								

BUDGET CODE		ACTUAL 2013-14	BUDGET 2014-15	ADOPTED 2015-16	Administration 2015-16	Instruction 2015-16	Capital 2015-16	BUDGET CHANGES	Percent Differences
A2110	<b>TEACHING - REGULAR SCHOOL #1</b>								
	<b>INSTRUCTIONAL SALARIES</b>								
A2110150	Full Day Kindergarten Teachers ( 5 FTE)	476,243	480,250	513,069		513,069		32,819	6.83%
A2110151	Elementary School Teachers: 1 - 4 (25.9 FTE)	2,781,067	2,884,462	2,868,338		2,868,338		63,876	2.28%
A2110152	Middle School Teachers: 5 - 8 (33.7 FTE)	3,461,238	3,490,355	3,565,497		3,565,497		75,142	2.15%
A2110152	High School Teachers: 9 - 12 (38.2 FTE)	3,846,972	3,879,333	4,029,759		4,029,759		150,426	3.88%
	<b>FTE's include Proposed Initiatives plus current FTE</b>	<b>10,565,520</b>	<b>10,654,000</b>	<b>10,976,663</b>		<b>10,976,663</b>		<b>322,263</b>	<b>3.02%</b>
A2110.1537.154	Substitute Teachers	160,771	200,000	200,000		200,000		0	0.00%
153 / 154	District Wide: Extended Term Leaves and Daily Substitutes								
A2110.158	Additional Instructional Salary Provisions: Includes: Leadership Positions, Committee Assignments, Test Proctors, etc.	45,000	107,712	65,000		65,000		-42,712	-39.68%
A2110.159	Additional Credit Hours & Salary Schedule Upgrades Earned During The Year	18,000	100,000	35,973		35,973		-64,027	-64.83%
A2110.15	<b>Total: Instructional Salaries</b>	<b>10,789,291</b>	<b>11,062,112</b>	<b>11,277,636</b>		<b>11,277,636</b>		<b>215,524</b>	<b>1.95%</b>
	<b>NON-INSTRUCTIONAL SALARIES</b>								
A2110.165	Theater Manager ( 1 FTE)	36,000	45,817	45,817		45,817			
A2110.164	Teacher Aides: ( 1 FTE)/substitutes	44,133	60,000	60,000		60,000			
A2110.167	Monitors: (11.3 FTE)	244,474	279,664	284,686		284,686		5,022	1.80%
A2110.169	Substitute School Monitors	15,000	25,000	15,000		15,000		-10,000	-40.00%
A2110.16	<b>Total Non Instructional Salaries</b>	<b>339,607</b>	<b>410,481</b>	<b>405,503</b>		<b>405,503</b>		<b>-4,978</b>	<b>-1.21%</b>
	<b>#1 NOTES: Salaries for teachers, teacher aides and monitors have not been determined at this time.</b>								
	<b>TEACHING - REGULAR SCHOOL</b>								
	<b>CONTRACTUAL EXPENSES #2</b>								
	Tech Support for Smart Board/Epilog Laser	0	0	3,640		3,640		3,640	
	High School/Professional Dev. Travel & Conference	530	7,985	13,310		13,310		5,325	
	Middle School/Professional Dev. Travel & Conference	501	2,000	2,000		2,000			
	Elementary School/Destination Imagination	1,034	18,000	19,668		19,668		1,668	
	School Interconnect (Bestweb)	25,000	25,000	29,000		29,000		4,000	16.00%
	District: Testing Services	67	5,000	0		0		-5,000	
	Appicare Enterprise Support	15,996	16,000	16,000		16,000			
	Student Accident Insurance	22,690	23,825	24,070		24,070		245	
	Student Information Systems: Annual License/Powerschool	8,500	8,500	8,500		8,500			
	School District Disaster Recovery	6,600	6,600	6,600		6,600			
	Instructional Service Contracts and Repair	8,000	30,000	30,000		30,000		0	
A2110.4	<b>Total: Contractual</b>	<b>89,718</b>	<b>142,910</b>	<b>152,788</b>		<b>152,788</b>		<b>9,878</b>	<b>6.91%</b>
	<b>TUITIONS:</b>								
472	Homebound / Hospitalized / Tutors	11,431	36,000	50,000		50,000		14,000	38.89%
473	Foster Tuitions	0	55,000	55,000		55,000			
A2110.47	<b>Total: Tuitions</b>	<b>11,431</b>	<b>91,000</b>	<b>105,000</b>		<b>105,000</b>		<b>14,000</b>	<b>15.38%</b>
	<b>#2 NOTES: Contractual Expenses include items such as book rebinding, equipment repairs, and equipment repairs.</b>								
	<b>MATERIALS &amp; SUPPLIES #3</b>								
	High School	100,637	87,485	88,909		88,909		1,424	1.63%
	Middle School	112,393	127,028	105,200		105,200		-21,828	-17.18%
	Elementary School	85,058	85,700	85,700		85,700			
515	District Testing Materials	2,517	11,160	11,000		11,000		-160	-1.43%
501	District Curriculum Supplies	0	4,185	4,000		4,000		-185	-4.42%
A2110.45	<b>Total: Materials &amp; Supplies</b>	<b>300,605</b>	<b>315,558</b>	<b>294,809</b>		<b>294,809</b>		<b>-20,749</b>	<b>-6.58%</b>
	<b>#3 NOTES: Materials and Supplies are for basic classroom supplies such as paper, markers, pencils, pens, etc. as well as supplies for special areas such as art, music, science, math, and physical education.</b>								

BUDGET CODE	TEACHING - REGULAR SCHOOL	ACTUAL 2013-14	BUDGET 2014-15	ADOPTED 2015-16	Administration 2015-16	Instruction 2015-16	Capital 2015-16	BUDGET CHANGES	Percent Differences
A2110.48	<b>TEXTBOOKS #1</b>								
	High School	33,183	41,000	68,006		68,006		27,006	65.87%
	Middle School	28,850	31,000	31,000		31,000			
	Elementary School	44,759	25,390	40,000		40,000		14,610	57.54%
	Special Education	0	3,143	3,143		3,143			
A2110.482	Non-Public Schools	4,440	14,000	10,000		10,000		-4,000	-28.57%
<b>A2110.48</b>	<b>Totals: Textbooks</b>	<b>111,232</b>	<b>114,533</b>	<b>152,149</b>		<b>152,149</b>		<b>37,616</b>	<b>32.84%</b>
	#1 NOTES: Textbook expenditures are offset by Textbook Aid at \$58.25 per resident pupil. This is the 2014-15 aid amount								
	..								
	<b>BOCES SERVICES #2</b>								
	<b>Program Codes</b>								
5231	College Conference	1,861	1,870	1,870		1,870		0	
2280490	High School TECH CENTER Regular Course: (55) +4	489,859	478,783	541,114		541,114		62,331	
5062	Girl's Choices	1,432	1,439	1,500		1,500		61	4.24%
6115	State Reporting Compliance	12,005	12,061	12,061		12,061		0	
4770	Arts in Education	69,675	70,000	70,000		70,000		0	
5047	Standards Assessment	4,479	4,500	4,500		4,500		0	
4851	Regional Summer School	3,981	4,000	4,000		4,000		0	
5420	Science 21 Curriculum Training	1,991	2,000	2,000		2,000		0	
5220	Science 21 Instructional Materials & Kits	16,224	16,300	16,500		16,500		200	1.23%
5060	Destination Imagination	7,465	7,500	7,500		7,500		0	
60006261	Recruitment and Certification Services	1,523	1,530	1,530		1,530		0	
4065	Environmental Education; Non-participant maintenance charge	3,922	3,940	2,820		2,820		-1,120	-28.43%
5040	Curriculum Center	9,204	9,247	9,717		9,717		470	
510.1/554	Castle Learning/Maintenance	6,162	6,191	6,576		6,576		385	
510/554	Renaissance Learning	6,755	6,786	0		0		-6,786	
510/554	Finance Manager Support	0	0	17,000		17,000		17,000	
510.25	Server & Hardware Maintenance & Licensing Renewals	71,974	72,309	72,692		72,692		383	
554/611.5	Teachscape	6,492	6,522	7,839		7,839		1,317	
	On-Line Courses	24,884	25,000	25,133		25,133		133	
510.8	Hardware Repairs	60,916	61,200	64,444		64,444		3,244	
554	Model Schools	10,949	11,000	11,330		11,330		330	
611.38	Test Scoring	30,978	31,122	32,000		32,000		878	
611	Disaster Recovery	9,954	10,000	10,300		10,300		300	
5151, 5170, 5171	Laminating, Graphics, Copying Services	6,470	6,500	6,845		6,845		345	5.31%
6971	Fingerprinting Services	1,991	2,000	2,106		2,106		106	
510/511	iReady	0	0	12,714		12,714		12,714	
611	Data Warehousing	8,336	8,375	8,390		8,390		15	
6118	Telecommunications	21,005	21,103	25,244		25,244		4,141	
	State Reporting, State Data Validation, State Data Collection, SIS Support	16,149	16,224	8,084		8,084		-8,140	-50.17%
<b>A2110.49</b>	<b>Totals: Boces Services</b>	<b>905,836</b>	<b>897,502</b>	<b>985,009</b>		<b>985,009</b>		<b>88,307</b>	<b>9.84%</b>
<b>A2330.4</b>	<b>Dutchess Community College/ Billed for Exact Amount (Revenue)</b>	<b>74,981</b>	<b>93,000</b>	<b>100,000</b>		<b>100,000</b>		<b>7,000</b>	<b>7.53%</b>
<b>A2110***</b>	<b>TOTAL: TEACHING REGULAR SCHOOL</b>	<b>12,622,781</b>	<b>13,127,096</b>	<b>13,473,694</b>		<b>13,473,694</b>		<b>346,596</b>	<b>2.64%</b>
	#2 NOTES: Services through BOCES are eligible for BOCES Aid at 50% on average.								

BUDGET CODE	SPECIAL APPOINTMENT PROGRAMS	ACTUAL 2013-14	BUDGET 2014-15	ADOPTED 2015-16	Administration 2015-16	Instruction 2015-16	Capital 2015-16	BUDGET CHANGES	Percent Differences
A2250	PUPILS WITH HANDICAPPING CONDITIONS								
A2250.15	SALARIES: INSTRUCTIONAL: Teacher Salaries (30.2 FTE) Hourly and substitutes Assistant Superintendent of Pupil Personnel Services & Human Resources #1	2,988,954 0 131,250	2,953,421 49,730 131,250	2,980,636 49,730 131,250		2,980,636 49,730		27,215	0.92%
A2250.15	<b>TOTAL: INSTRUCTIONAL SALARIES</b>	<b>3,120,204</b>	<b>3,134,401</b>	<b>3,161,616</b>	<b>131,250</b>	<b>3,030,366</b>		<b>27,215</b>	<b>0.87%</b>
A2250.16	SALARIES: NON-INSTRUCTIONAL Teacher Aides Includes New Horizons/Substitute Teacher Aides (34 FTE) Includes: Clerical Support 2 FTE	1,293,837 0	1,154,859 107,112	1,195,300 110,000		1,195,300		40,441	3.50%
A2250.16	<b>TOTAL: NON-INSTRUCTIONAL SALARIES</b>	<b>1,293,837</b>	<b>1,261,971</b>	<b>1,305,300</b>	<b>110,000</b>	<b>1,195,300</b>		<b>43,329</b>	<b>3.43%</b>
#1NOTES: The Director of Special Education position has been eliminated and replaced with the position of Assistant Superintendent for Pupil Personnel Services and Human Resources.									
A2250.4	CONTRACTUAL EXPENSES: General Contractual:	0	43,116	30,000		30,000		-13,116	-30.42%
A2250.446	Consultant Therapists for Evaluations, Physical Therapy,	370,632	316,575	411,575		411,575		95,000	30.01%
A2250.4	<b>TOTAL: CONTRACTUAL</b>	<b>370,632</b>	<b>359,691</b>	<b>441,575</b>		<b>441,575</b>		<b>81,884</b>	<b>22.77%</b>
A2250.471 & A2250.472	TUITION: Public / Private Special Schools: Tuition & Maintenance Tuition: Spcl Ed Homebound / Hospitalized / Tutoring	798,607 0	1,051,630 54,000	1,108,500 69,000		1,108,500 69,000		56,870 15,000	5.41% 27.78%
A2250.47	<b>TOTAL: TUITION</b>	<b>798,607</b>	<b>1,105,630</b>	<b>1,177,500</b>		<b>1,177,500</b>		<b>71,870</b>	<b>6.50%</b>
A2250.45	<b>MATERIALS &amp; SUPPLIES</b>	<b>19,246</b>	<b>30,240</b>	<b>30,240</b>		<b>30,240</b>		<b>0</b>	<b>0.00%</b>
BOCES SERVICES									
Program Codes SPECIAL EDUCATION									
COSERS									
204	Communications, Language, Academic, Social Skills 1 + 1 aide	97,153	121,123	61,767		61,767		-59,356	
211	Local School Building Programs 1	42,327	52,770	150,654		150,654		97,884	185.49%
212	Learning Center 4	209,574	261,280	329,500		329,500		68,220	
203	AIIM/SWB	148,389	185,000	167,154		167,154			
235	TSP/DD/Fragile	128,336	160,000	168,382		168,382			
402	ITSP	39,463	49,200	54,000		54,000			
430	Regional Alternative High School For Disabled/GED 2	67,948	84,712	173,256		173,256		88,544	
215	Multiple Disabilities 3	156,627	195,270	49,471		49,471		-145,799	
333	Diagnostic & Prescriptive Services	23,516	29,318	10,421		10,421		-18,897	
301-307	Shared Teacher Services	86,601	107,968	58,650		58,650		-49,318	
315	Remedial Reading	0	0	0		0			
312/313/530	Physical Therapy/Occupational Therapy/Reading/Consultant Services/Speech	33,924	42,294	160,000		160,000		117,706	
242	Rockland BOCES	42,845	53,416	68,840		68,840		15,424	
	NYSAA Scoring	2,487	3,100	0		0			
405	Walkabout	16,441	20,498	0		0		-20,498	
	Extended School Year Program	52,137	65,000	50,000		50,000			
6113	IEP Direct	9,907	12,351	12,351		12,351			
A2250.49	<b>Totals Boces Services</b>	<b>1,157,675</b>	<b>1,443,300</b>	<b>1,514,446</b>		<b>1,514,446</b>		<b>71,146</b>	<b>4.93%</b>
A2250***	<b>TOTAL: Pupils With Handicapping Conditions</b>	<b>6,760,201</b>	<b>7,335,233</b>	<b>7,630,677</b>	<b>241,250</b>	<b>7,389,427</b>		<b>295,444</b>	<b>4.83%</b>
A2299	<b>TOTAL: SPECIAL APPOINTMENT PROGRAMS</b>	<b>6,760,201</b>	<b>7,335,233</b>	<b>7,630,677</b>	<b>241,250</b>	<b>7,389,427</b>		<b>295,444</b>	<b>4.83%</b>

CODE	INSTRUCTIONAL MEDIA	ACTUAL 2013-14	BUDGET 2014-15	ADOPTED 2015-16	Administration 2015-16	Instruction 2015-16	Capital 2015-16	BUDGET CHANGES	Percent Differences
A2610 & A2620	SCHOOL LIBRARIES								
A2610.15	SALARIES: INSTRUCTIONAL								
A2610/A2620	High School Librarian ( 1 FTE)	103,117	106,822	107,922		107,922		1,100	1.03%
A2610.161	SALARIES: NON-INSTRUCTIONAL	0	33,699	32,009		32,009		-1,610	-4.78%
	ES Library Teacher Aide ( 1 FTE)								
	BOCES SERVICES								
	Professional Library, Library Automation, Library Database	26,941	22,000	22,000		22,000			
	Audio-Visual Equipment Repairs	0	4,000	7,000		7,000		3,000	75.00%
A2610.490	TOTAL: BOCES SERVICES	26,941	26,000	29,000		29,000		3,000	11.54%
A2610.45	MATERIALS & SUPPLIES #1	13,156	0	0					
	High School	0	14,245	5,500		5,500		-8,745	-61.39%
	Middle School	0	10,000	10,000		10,000			
	Elementary School	0	17,464	12,750		12,750		-4,714	-26.99%
A2610.46	School Library AV Loan Program	11,562	0	0		0			
	TOTAL: MATERIALS AND SUPPLIES	24,718	41,709	28,250		28,250		-13,459	-32.27%
A2610 & A2620	TOTAL: School Libraries & Educational Television	154,776	208,230	197,261		197,261		-10,969	-5.27%
	#1 NOTES: Materials and Supplies include library books, periodical subscriptions, CD's, DVD's, etc.								
A2630	COMPUTER EDUCATION								
	SALARIES: INSTRUCTIONAL								
	Elementary School: ( 1.0 FTE)	104,234	107,322	107,872		107,872		550	0.51%
	Director of Facilities, Technology and Transportation (0.33 FTE)	0	28,000	40,000	40,000	0		12,000	42.86%
A2630.151	TOTAL: INSTRUCTIONAL SALARIES	104,234	135,322	147,872	40,000	107,872		12,500	9.27%
A2630.16	SALARIES: NON-INSTRUCTIONAL:	201,296	234,829	272,829		272,829		38,000	16.18%
	Computer / Technology Specialists:								
	CIO HS 1.0 FTE, MS 1.0 FTE, ES 1.0 FTE Plus \$25,000 Summer Work								
A2630.4	CONTRACTUAL EXPENSES								
	High School	12	1,400	0		0		-1,400	
	Elementary School	0	526	0		0		-526	
	District wide	0	39,000	0		0			
	Total :Contractual	12	40,926	0		0		-40,926	
225	Hardware:State Aided	35,568	19,500	19,500		19,500			
460	SOFTWARE State Aided	0	0	26,200		26,200		26,200	
	High School	807	5,160	0		0		-5,160	
	Middle School	167	10,100	0		0		-10,100	
	Elementary School:	3,144	3,158	0		0		-3,158	
	Special Education	0	4,410	0		0		-4,410	
	District-wide	0	0	0		0			
A2630.4	TOTAL: SOFTWARE	39,686	42,328	45,700		45,700		3,372	7.97%
	BOCES SERVICES #3								
5102 / 6112	Computer Technology Internet/Network/Erate/LAN Support..... LHRIC	273,552	182,261	236,490		236,490		54,229	29.75%
5109	Computer Equipment Installment Purchase Agreement	525,100	197,893	220,000		220,000		22,107	11.17%
490-5104/6112	Internet Communications and Services								
A2630.490	Total: BOCES Services	798,652	380,154	456,490		456,490		76,336	20.08%
	#3 NOTES: BOCES expenses are offset by approx. 50% in State Aid.								
Hardware	MATERIALS & SUPPLIES								
	High School	0	27,900	25,000		25,000		-2,900	-10.39%
	Middle School	0	9,300	9,615		9,615		315	3.39%
	Elementary School	0	2,139	2,140		2,140		1	0.05%
	Special Education	0	995	995		995			
	District Wide	0	0	4,250		4,250		4,250	
A2630.45	TOTAL: MATERIALS AND SUPPLIES	0	40,334	42,000		42,000		1,666	4.13%
A2630***	TOTAL: Computer Education	1,143,500	873,893	964,891	40,000	924,891		90,998	10.41%
A2699	TOTAL: INSTRUCTIONAL MEDIA	1,298,656	1,082,123	1,162,152	40,000	1,122,152		80,829	7.40%
	#3 NOTES: Instructional Technology Services through BOCES are eligible for BOCES Aid at about 50%.								



BUDGET CODE	PUPIL SERVICES	ACTUAL 2013-14	BUDGET 2014-15	ADOPTED 2015-16	Administration 2015-16	Instruction 2015-16	Capital 2015-16	BUDGET CHANGES	Percent Differences
A2810	GUIDANCE								
A2810.151	SALARIES: INSTRUCTIONAL Guidance Counselors ( 4 FTE)	417,446	438,239	438,239		438,239			
A2810.160	SALARIES: NON-INSTRUCTIONAL High School Clerical (1 FTE) Includes summer work	74,735	75,402	77,902		77,902		2,500	3.32%
A2810.4	CONTRACTUAL EXPENSES High Schools: Student Support Specialist, contractual expenses	0	46,300	49,600		49,600		3,300	7.13%
A2810.490	BOCES SERVICES								
333	Diagnostic & Prescriptive Services	723	0	0		0		0	#DIV/0!
A2810.45	MATERIALS & SUPPLIES High School	1,294	3,200	3,700		3,700		500	15.43%
A2810***	TOTAL: Guidance	494,198	563,141	569,441		569,441		6,300	1.12%
A2815	HEALTH SERVICES								
A2815.16	SALARIES: NON-INSTRUCTIONAL Nurses (3 FTE) plus Summer Work, Substitutes	135,057	176,565	178,330		178,330		1,765	1.00%
A2815.160	Clerical Support			0		0			
A2815.16	Total: Non Instructional Salaries	135,057	176,565	178,330		178,330		1,765	1.00%
	CONTRACTUAL EXPENSES								
A2815.448	Payments to Other Districts for Health Service Provided to Resident Pupils	93,158	115,000	108,020		108,020		-6,980	-6.07%
A2815.448	School Physicians	16,000	16,000	18,000		18,000		2,000	12.50%
A2815.464	Equipment Repair	0	300	300		300			
A2815.4	TOTAL: CONTRACTUAL	109,158	131,300	126,320		126,320		-4,980	-3.79%
	MATERIALS & SUPPLIES: First Aid Supplies								
	High School	2,253	1,500	1,500		1,500			
	Middle School	0	2,000	2,000		2,000			
	Elementary School	737	1,627	1,627		1,627			
A2815.45	TOTAL: MATERIALS AND SUPPLIES	2,990	5,127	5,127		5,127		0	0.00%
A2815***	TOTAL: Health Services	247,205	312,992	309,777		309,777		-\$3,215	-1.03%
A2820	PUPIL SERVICES PSYCHOLOGICAL SERVICES								
A2820.151	SALARIES: INSTRUCTIONAL School Psychologists ( 4 FTE) and summer work	154,973	452,741	455,753		455,753		3,012	0.67%
A2820***	TOTAL: Psychological Services	154,973	452,741	455,753		455,753		3,012	0.67%
A2830	PUPIL PERSONNEL SERVICES								
	SALARIES: INSTRUCTIONAL:								
	Director of PPS & Special Education #1	79,138	0	0					
	Social Worker( 1 FTE)	108,221	110,594	110,594		110,594			
	Summer CSE Meetings and Evaluations	628	19,106	19,106		19,106			
A2830.157	TOTAL: INSTRUCTIONAL SALARIES	187,987	129,700	129,700		129,700			
A2830.160	SALARIES: NON-INSTRUCTIONAL	1,649	19,853	19,853	19,853				
	#1 NOTES: The duties of the Director of Pupil Personnel are assigned to the Assistant Superintendent for Curriculum and Pupil Personnel Services and Human Resources								
A2830.4	CONTRACTUAL EXPENSES	184	15,000	15,000		15,000		0	0.00%
A2830.472	Home and Hospital Instruction	19,003	7,891	20,891		20,891		13,000	164.74%
A2830.490	BOCES SERVICES								
402	Therapists	33,010	32,302	33,500		33,500		1,198	3.71%
A2830.45	MATERIALS & SUPPLIES #2	9,170	12,407	12,500		12,500		93	0.75%
	#2 NOTES: Materials and Supplies include general office supplies, computer paper, supplies for counselors, subscriptions, computer software, etc.								
A2830***	TOTAL: Pupil Personnel Services	251,003	217,153	231,444	19,853	211,891		14,291	6.58%

CODE	PUPIL SERVICES:	PUPIL ACTIVITIES	ACTUAL 2013-14	BUDGET 2014-15	ADOPTED 2015-16	Administration 2015-16	Instruction 2015-16	Capital 2015-16	BUDGET CHANGES	Percent Differences
A2850	Co-curricular Activities									
	SALARIES: INSTRUCTIONAL (District Wide)		8,593	0	0		0			
	High School Club Advisors & Chaperones/Perf. Art Center Productions		87,256	82,600	82,600		82,600			
	Middle School Club Advisors & Chaperones		26,354	36,316	36,316		36,316			
	ES Concert		17,208	29,247	29,247		29,247			
A2850.15	TOTAL: INSTRUCTIONAL SALARIES		139,411	148,163	148,163		148,163			
A2850.16	Chaperones-Non Teaching/ PAC Performances		39,684	20,000	40,000		40,000		20,000	100.00%
A2850.4	District Performing Arts: NYSSMA Fees/Musical Instrument Rentals & Repair		11,340	10,600	10,600		10,600			
	MATERIALS & SUPPLIES									
	Performing Arts: District Theatre Productions and Shows		0	33,485	35,000		35,000		1,515	4.52%
	High School Clubs		0	750	1,000		1,000		250	33.33%
	Middle School Clubs		8,160	17,800	17,800		17,800			
	District Support		0	4,650	3,000		3,000		-1,650	-35.48%
	PAC replacement costs		0	0	30,000		30,000			
A2850.45	TOTAL: MATERIALS AND SUPPLIES		8,160	56,885	86,800		86,800		38,115	53.13%
A2850***	TOTAL: Co-Curricular Activities		198,595	235,448	285,563		285,563		86,115	21.28%
A2855	Interscholastic Athletics									
A2855.158	SALARIES:									
	Athletics Director: (1.0 FTE)		128,880	126,250	128,250	76,950	51,300		2,000	1.58%
	Coaches Salaries		280,146	301,631	305,750		305,750		4,119	1.37%
	Asst. coaches Fitness Supervisor, Chaperones, Intramurals		64,085	49,310	75,789		75,789		26,479	53.70%
A2855.16	Clerical Support (1.0 FTE)		71,972	71,972	76,500		76,500		4,528	6.29%
	TOTAL: SALARIES		545,083	549,163	586,289	76,950	509,339		37,126	6.76%
A2855200	EQUIPMENT/ DURABLE SUPPLIES		6,000	7,600	0		0		-7,600	
	CONTRACTUAL EXPENSES									
A2855.479	Inter-Scholastic Athletics Transportation		57,982	54,464	70,000		70,000		15,536	28.53%
	General Contractual-other officials		60,485	60,000	60,000		60,000		0	0.00%
A2855.4	Total Contractual		108,467	114,464	130,000		130,000		15,536	13.87%
A2855.490	BOCES SERVICES: Officials and Coordinator		58,266	70,848	65,800		65,800		-5,048	-7.13%
	MATERIALS & SUPPLIES:									
A2855.45	Athletics Supplies - All Sports and Intramurals		48,109	50,000	60,848		60,848		10,848	20.10%
A2855***	TOTAL: Interscholastic Athletics		765,925	792,875	842,137	76,950	765,187		86,062	6.32%
A2899	TOTAL PUPIL SERVICES		2,111,899	2,573,550	2,694,115	96,803	2,597,312		120,565	4.68%
A2999	TOTAL INSTRUCTION #1		24,419,953	23,934,742	26,915,330	2,157,585	24,757,945		960,788	3.70%

#1 NOTES: TOTAL INSTRUCTION summarizes the following functions: Administration and Improvement, Teaching Regular School, Special Education Programs, Instructional Media, and Pupil Services.

A5510 PUPIL TRANSPORTATION		ACTUAL	BUDGET	ADOPTED	Administration	Instruction	Capital	BUDGET	Percent
BUDGET		2013-14	2014-15	2015-16	2015-16	2015-16	2015-16	CHANGES	Differences
CODE									
	<b>SALARIES: NON-INSTRUCTIONAL: Includes</b>								
	Director of Facilities, Technology and Transportation #1 (.33 FTE)	0	40,000	40,000		40,000			
A5510.167	Head Bus Driver (1.0 FTE)	79,111	79,111	79,111		79,111		0	0.00%
A5510.167	Clerical; Drivers; Mechanic; Monitors	899,019	950,500	910,500		910,500		-40,000	-4.21%
A5510.168	Overtime	26,030	50,000	50,000		50,000			
A5510.169	Substitutes	13,155	27,163	27,500		27,500		337	1.24%
	Overtime and Substitutes are used to cover absences, extended illness, cover bus runs necessitated by inclement weather, bus delays, early dismissals, and other transportation needs as they arise.								
A5510.16		1,017,315	1,146,774	1,107,111		1,107,111		-39,663	-3.46%
	<b>#1 NOTES: The responsibilities of the Director of Facilities, Technology and Transportation are distributed between Operations &amp; Maintenance, Transportation and Technology.</b>								
A5510.21	Purchase of Buses	0	0	88,000			88,000	88,000	
A5510.890	EQUIPMENT // DURABLE SUPPLIES Replacement of radios and bus camera systems	0	7,500	0		0		-7,500	-100.00%
	<b>CONTRACTUAL EXPENSES</b>								
	Meteorological Forecasting Services	0	0	0		0			
	Other Contractual Expenses: Tolls, Fingerprinting, Mileage, Consultants	0	5,050	5,050		5,050			
A5510.421	Vehicle Insurance	15,523	26,000	26,500		26,500		500	1.92%
A5510.449	Mandated Driver Medical Examinations and Drug Testing	2,982	2,000	2,150		2,150		150	7.50%
A5510.464	Bus Repairs	18,036	16,068	16,268		16,268		200	1.24%
A5510.466	Bus Safety Education and State Mandated Certifications	3,443	3,800	4,032		4,032		232	6.11%
A5510.4	<b>Total Contractual</b>	40,784	52,918	54,000		54,000		1,082	2.04%
	<b>MATERIALS &amp; SUPPLIES</b>								
	General Office	0	1,340	1,500		1,500		160	11.94%
A5510.45	Vehicle Materials, Supplies, Handtools, Tires, Parts, Oil, Bus Parts	45,343	49,526	51,500		51,500		1,974	3.99%
A5510.571	Gasoline and Diesel	253,325	227,136	235,000		235,000		7,864	3.46%
A5510.45	<b>TOTAL: MATERIALS AND SUPPLIES</b>	298,668	278,002	288,000		288,000		9,998	3.60%
A5540.4	Special Private School Mandated transportation for pupils attending summer schools	0	12,225	0		0		-12,225	-100.00%
A5540.4 / 401	<b>CONTRACT TRANSPORTATION SERVICES #2</b> Hudson Valley Bus Regular Runs: 18 Buses: 66 passenger 2 Vans: 20 passenger	1,194,428	1,315,650	1,275,615		1,275,615		-40,035	-3.04%
	<b>#2 NOTES:</b> The transportation contract figure is the result of a new bid for services (renewable for 5 years + 1% 1st, 2nd 3rd years 0% in the 4th and 1% in the 5th)								
A5599	<b>TOTAL: PUPIL TRANSPORTATION</b>	2,351,195	2,813,869	2,812,726	0	2,724,726	88,000	-343	-0.01%

BUDGET CODE	UNDISTRIBUTED	ACTUAL 2013-14	BUDGET 2014-15	ADOPTED 2015-16	Administration 2015-16	Instruction 2015-16	Capital 2015-16	BUDGET CHANGES	Percent Differences
<b>EMPLOYEE BENEFITS ##</b>									
A9010.800	NYS EMPLOYEES' RETIREMENT	881,458	1,252,411	1,135,159	206,599	664,295	264,265	-117,252	-9.36%
A9020.800	NYS TEACHERS' RETIREMENT	2,686,770	3,250,155	2,592,155	205,299	2,386,856	0	-658,000	-20.25%
A9030.800	SOCIAL SECURITY AND MEDICARE	1,699,247	1,994,725	2,087,449	166,996	1,818,168	102,285	92,724	4.65%
A9040.800	WORKERS' COMPENSATION	152,337	142,520	175,000	9,000	152,425	13,575	32,480	21.79%
A9045.800	LIFE INSURANCE	8,769	18,484	12,000	960	10,452	588	-6,486	-35.09%
A9050.800	UNEMPLOYMENT INSURANCE	41,349	50,000	50,000	2,500	43,550	3,950	0	0.00%
A9060.800	HOSPITAL AND MEDICAL INSURANCE	4,866,687	5,091,403	5,200,155	362,718	4,622,493	214,944	108,752	2.14%
A9070.800	UNION WELFARE BENEFITS	415,621	428,800	425,000	41,850	358,350	24,800	-3,800	-0.89%
<b>A9998</b>	<b>TOTAL: Employee Benefits</b>	<b>10,752,238</b>	<b>12,228,500</b>	<b>11,676,918</b>	<b>995,922</b>	<b>10,856,589</b>	<b>624,407</b>	<b>-551,582</b>	<b>-4.51%</b>
<b>## NOTES:</b>									
New York State sets the retirement contribution rates. Local school districts have no control over retirement contribution rate.									
State Retirement contributions are made by the district for member employees at various contribution levels for salaries earned between April 1, 2014 and March 31, 2015. The rate is projected to be 18.2% of payroll on average.									
Teacher Retirement contributions estimated at 13.26% of payroll are made by the district for member employees based on salaries earned between July 1, 2015 and June 30, 2016.									
The FICA rate for 2014 remains at 6.2%									
The Medicare portion 1.45%									
The Putnam Valley School District is self insured through the Westchester Putnam School Cooperative Workers Compensation Plan. This is the premium determined by an independent actuarial firm based on salaries and loss experience.									
Eligible employees are provided with term life insurance at \$7,500; Administrators are insured at varied amounts.									
Eligible employees and retirees receive individual or family hospital and medical insurance. Premiums will increase 1.5% next year. Health insurance coverage for retirees continue to rise as the number of retirees increase. Retirees also receive medicare premium reimbursements.									
Welfare benefit contributions of \$1,600 are made on behalf of each eligible employee.									
<b>INTERFUND TRANSFERS</b>									
A9901.95	Special Aid Fund: District Share of Extended School Year Programs	78,051	65,000	85,000			85,000	20,000	30.77%
A9950.9	Transfer to Capital Fund	1,772,970	573,868	0			0	-573,868	
A9901.96	Transfer to Debt Service for 2015-16 Liability	1,500,000	0	1,835,195			1,835,195	1,835,195	
	Transfer to Debt Service as a result of additional aid for future year			316,140			316,140	316,140	
	<b>TOTAL: Interfund Transfer</b>	<b>3,351,021</b>	<b>638,868</b>	<b>2,236,335</b>			<b>2,236,335</b>	<b>1,597,467</b>	<b>250.85%</b>
<b>DEBT SERVICE</b>									
A9711.6	Construction Principal	1,685,000	1,512,288	0			0	-1,512,288	
A9711.7	Construction Interest	734,618	885,000	0			0	-885,000	
<b>A9898</b>	<b>TOTAL: Debt Service</b>	<b>2,419,618</b>	<b>2,397,288</b>	<b>0</b>			<b>0</b>	<b>-2,397,288</b>	
<b>A9959</b>	<b>TOTAL: UNDISTRIBUTED</b>	<b>16,522,877</b>	<b>15,264,856</b>	<b>13,913,253</b>	<b>995,922</b>	<b>10,856,589</b>	<b>2,860,743</b>	<b>-1,351,403</b>	<b>-8.85%</b>
<b>A9999</b>	<b>TOTAL: GENERAL FUND</b>	<b>47,747,883</b>	<b>48,155,147</b>	<b>47,975,919</b>	<b>4,998,755</b>	<b>37,539,260</b>	<b>5,437,904</b>	<b>-179,228</b>	<b>-0.37%</b>

**EXPENDITURES**

**GENERAL SUPPORT**

A1010 - A1060 Board of Education  
 A1240 Central Administration  
 A1310 - A1380 Finance  
 A1420 - A1480 Staff  
 A1620 - A1680 Central Services  
 A1910 - A1980 Special Items

Total

**INSTRUCTION**

A2070 Instructional Improvement  
 A2110 Teaching: Regular School  
 A2250 Special Apportionment Programs  
 A2600 Instructional Media  
 A2800 Pupil Services

Total

**TRANSPORTATION**

A5510 Pupil Transportation

**UNDISTRIBUTED**

A9010-70 Employee Benefits  
 A9789 Debt Service  
 A9901 Interfund Transfers

Total

**TOTAL: GENERAL FUND**

BUDGET 2014-15	ADOPTED 2015-16	ADOPTED			BUDGET CHANGES	Percent Differences
		Administration 2015-16	Instruction 2015-16	Capital 2015-16		
45,367	49,970	49,970	0	0	4,603	10.15%
365,219	377,008	377,008	0	0	11,789	3.23%
566,661	551,874	551,874	0	0	-14,787	-2.61%
208,176	232,773	232,773	0	0	24,597	11.82%
2,379,070	2,439,162	0	0	2,439,162	60,092	2.53%
558,187	683,623	633,623	0	50,000	125,436	22.47%
4,122,680	4,334,410	1,845,248	0	2,489,162	211,730	5.14%
1,836,740	1,954,892	1,779,532	175,360	0	118,152	6.43%
13,127,096	13,473,694	0	13,473,694	0	346,598	2.64%
7,335,233	7,630,677	241,250	7,389,427	0	295,444	4.03%
1,082,123	1,162,152	40,000	1,122,152	0	80,029	7.40%
2,573,550	2,694,115	96,803	2,597,312	0	120,565	4.68%
25,954,742	26,915,530	2,157,585	24,757,945	0	960,788	3.70%
2,813,069	2,812,726	0	2,724,726	88,000	-343	-0.01%
12,228,500	11,676,918	995,922	10,056,589	624,407	-551,582	-4.51%
2,397,288	0	0	0	0	-2,397,288	
638,868	2,236,335	0	0	2,236,335	1,597,467	250.05%
15,264,656	13,913,253	995,922	10,056,589	2,860,742	-1,351,403	-8.85%
48,155,147	47,975,919	4,998,755	37,539,260	5,437,904	-179,228	-0.37%

**Putnam Valley Central Schools  
2015-16**

**Administrative Compensation Information**

Pursuant to Chapter 474 of the Education Laws of 1996 section 1608

<b>Title</b>	<b>Salary</b>	<b>Benefits</b>
<u>Superintendent of Schools*</u>	260,000	10,827
<u>Assistant Superintendent of Pupil Personnel Services and Human Resources</u>	175,000	55,874
<b><u>Other Supervisory and Administrative Employees</u></b>		
<u>High School Principal</u>	180,092	
<u>Assistant High School Principal</u>	157,988	
<u>Middle School Principal</u>	178,691	
<u>Assistant Middle School Principal</u>	152,488	
<u>Elementary School Principal</u>	162,360	

\* Superintendent's salary is based on a per diem amount

Note: Some data elements of the Property Tax Report Card have been revised or renamed to more closely follow the Property Tax Cap calculations districts complete on the Office of the State Comptroller website. Please see the Help text above for definitions. Additional guidance on the Property Tax Levy Limit is available on the Office of Educational Management Services website: <http://www.p12.nysed.gov/mqiserv/propertytax/capd/>.

Please also submit an electronic version (PDF or Word) of your school districts 2015-16 Budget Notice to: [emscomgts@nysed.gov](mailto:emscomgts@nysed.gov). This will enable us to help correct any formula or data entry discrepancy quickly.

Form Due - April 27, 2015

Form Preparer Name:   
 Preparer's Telephone Number:

Calculate	Shaded Fields Will	Budgeted 2014-15 (A)	Proposed Budget 2015-16 (B)	Percent Change (C)
Total Budgeted Amount, not including Separate Propositions		<input type="text" value="48,155,147"/>	<input type="text" value="47,975,919"/>	<input type="text" value="-0.37"/>
A. Proposed Tax Levy to Support the Total Budgeted Amount <sup>1</sup>		<input type="text" value="36,125,964"/>	<input type="text" value="35,944,964"/>	
B. Tax Levy to Support Library Debt, if Applicable		<input type="text" value="0"/>	<input type="text" value="0"/>	
C. Tax Levy for Non-Excludable Propositions, if Applicable <sup>2</sup>		<input type="text" value="0"/>	<input type="text" value="0"/>	
D. Total Tax Cap Reserve Amount Used to Reduce Current Year Levy, if Applicable		<input type="text" value="0"/>	<input type="text" value="0"/>	
E. Total Proposed School Year Tax Levy (A+B+C-D)		<input type="text" value="36,125,964"/>	<input type="text" value="35,944,964"/>	<input type="text" value="-0.50"/>
F. Permissible Exclusions to the School Tax Levy Limit		<input type="text" value="1,353,787"/>	<input type="text" value="1,010,465"/>	
G. School Tax Levy Limit, Excluding Levy for Permissible Exclusions <sup>3</sup>		<input type="text" value="36,162,507"/>	<input type="text" value="36,345,951"/>	
H. Total Proposed Tax Levy for School Purposes, Excluding Permissible Exclusions and Levy for Library Debt, Plus Prior Year Tax Cap Reserve (E-B-F+D)		<input type="text" value="34,772,177"/>	<input type="text" value="34,934,499"/>	
I. Difference: (G+H):(negative value requires 60.0% voter approval) <sup>2</sup>		<input type="text" value="1,390,330"/>	<input type="text" value="1,411,452"/>	
Public School Enrollment		<input type="text" value="1,734"/>	<input type="text" value="1,718"/>	<input type="text" value="-0.92"/>
Consumer Prices Index				<input type="text" value="1.62"/>

- <sup>1</sup> Include any prior year reserve for excess tax levy, including interest.
- <sup>2</sup> Tax levy associated with educational or transportation services propositions are not eligible for exclusion under the School Tax Levy Limit and may affect voter approval requirements.
- <sup>3</sup> For 2015-16, includes any carryover from 2014-15 and excludes any tax levy for library debt or prior year reserve for excess tax levy, including interest.

	Actual 2014-15 (D)	Estimated 2015-16 (E)
Adjusted Restricted Fund Balance	<input type="text" value="3,716,080"/>	<input type="text" value="3,725,000"/>
Assigned Appropriated Fund Balance	<input type="text" value="1,179,068"/>	<input type="text" value="994,632"/>
Adjusted Unrestricted Fund Balance	<input type="text" value="1,926,204"/>	<input type="text" value="1,919,037"/>
Adjusted Unrestricted Fund Balance as a Percent of the Total Budget	<input type="text" value="4.00"/> %	<input type="text" value="4.00"/> %

NYS - Real Property System  
County of Putnam  
TOWN OF CARHEL

Assessor's Report - 2015 - Current Year File  
S495 Exemption Impact Report  
School District Summary

RPS221/V04/L001  
Date/Time - 4/23/2015 08:16:35  
Total Assessed Value 3,865,887

Equalized Total Assessed Value 6,443,145

School District - 372803 Putnam Valley Cent

Exemption Code	Exemption Name	Statutory Authority	Number of Exemptions	Total Equalized Value of Exemptions	Percent of Value Exempted
25230	NONPROF CORP - MORAL/MENTAL IM	RPTL 420-a	1	87,500	1.36
41730	AGRIC LAND-INDIV NOT IN AG DIS	AG MKTS L 306	2	233,555	3.62
41854	BASIC STAR 1999-2000	RPTL 425	2	105,234	1.63
Total Exemptions Exclusive of System Exemptions:			5	426,289	6.62
Total System Exemptions:			0	0	0.00
Totals:			5	426,289	6.62

---

Values have been equalized using the Uniform Percentage of Value. The Exempt amounts do not take into consideration, payments in lieu of taxes or other payments for municipal services.

---

Amount, if any, attributable to payments in lieu of taxes: \_\_\_\_\_



TOWN OF PUTNAM VALLEY

Equalized Total Assessed Value 1,245,514,310

School District - 372803 Putnam Valley Cent

Exemption Code	Exemption Name	Statutory Authority	Number of Exemptions	Total Equalized Value of Exemptions	Percent of Value Exempted
13100	CO - GENERALLY	RPTL 406(1)	14	1,649,780	0.13
13500	TOWN - GENERALLY	RPTL 406(1)	94	6,896,750	0.55
13800	SCHOOL DISTRICT	RPTL 408	3	16,482,400	1.32
13870	SPEC DIST USED FOR PURPOSE EST	RPTL 410	73	5,566,600	0.45
14100	USA - GENERALLY	RPTL 400(1)	2	1,504,800	0.12
25110	NONPROF CORP - RELIG(CONST PRO	RPTL 420-a	14	8,250,200	0.66
25130	NONPROF CORP - CHAR (CONST PRO	RPTL 420-a	4	3,311,100	0.27
25230	NONPROF CORP - MORAL/MENTAL IM	RPTL 420-a	2	4,956,100	0.40
25300	NONPROF CORP - SPECIFIED USES	RPTL 420-b	6	1,016,900	0.08
26050	AGRICULTURAL SOCIETY	RPTL 450	1	213,900	0.02
26100	VETERANS ORGANIZATION	RPTL 452	1	443,000	0.04
26400	INC VOLUNTEER FIRE CO OR DEPT	RPTL 464(2)	3	1,514,400	0.12
27350	PRIVATELY OWNED CEMETERY LAND	RPTL 446	6	2,555,400	0.21
28540	NOT-FOR-PROFIT HOUS CO - HOSTE	RPTL 422	1	487,600	0.04
41120	ALT VET EX-WAR PERIOD-NON-COMB	RPTL 458-a	167	2,004,000	0.16
41130	ALT VET EX-WAR PERIOD-COMBAT	RPTL 458-a	115	2,300,000	0.18
41140	ALT VET EX-WAR PERIOD-DISABILI	RPTL 458-a	29	905,361	0.07
41400	CLERGY	RPTL 460	1	1,500	0.00
41690	VOLUNTEER FIREFIGHTERS AND AMB	RPTL 466-c,d,e,f,g,h&i	16	48,000	0.00
41700	AGRICULTURAL BUILDING	RPTL 483	4	233,960	0.02
41720	AGRICULTURAL DISTRICT	AG-MKTS L 305	8	973,198	0.08
41730	AGRIC LAND-INDIV NOT IN AG DIS	AG MKTS L 306	1	116,820	0.01
41800	PERSONS AGE 65 OR OVER	RPTL 467	94	11,575,310	0.93
41834	ENHANCED STAR	RPTL 425	377	40,871,345	3.28
41854	BASIC STAR 1999-2000	RPTL 425	2,287	116,241,150	9.33
41930	DISABILITIES AND LIMITED INCOM	RPTL 459-c	10	996,225	0.08
47616	BUSINESS INVESTMENT PROPERTY F	RPTL 485-b	1	105,750	0.01

Equalized Total Assessed Value 1,245,514,310

School District - 372803 Putnam Valley Cent

Exemption Code	Exemption Name	Statutory Authority	Number of Exemptions	Total Equalized Value of Exemptions	Percent of Value Exempted
50000	SYSTEM CODE	STATUTORY AUTH NOT DEFINED	1	2,422,500	0.19
Total Exemptions Exclusive of System Exemptions:			3,334	231,221,549	18.56
Total System Exemptions:			1	2,422,500	0.19
Totals:			3,335	233,644,049	18.76

Values have been equalized using the Uniform Percentage of Value. The Exempt amounts do not take into consideration, payments in lieu of taxes or other payments for municipal services.

Amount, if any, attributable to payments in lieu of taxes: \_\_\_\_\_

NYS - Real Property System  
Putnam Valley Cent School District  
School District Code: 372803

File Totals - 2015 - Current Year File  
Town within School District Summary

RPS960/V04/L002

SWIS Code	Name	Parcels	Land Assessed Value	Total Assessed Value	School Taxable	Total Star Exempt Amt	Star Taxable
372000	Carmel	25	1,125,463	3,865,887	3,673,254	63,140	3,610,114
		25	1,125,463	3,865,887	3,673,254	63,140	3,610,114

NYS - Real Property System  
Putnam Valley Cent School District  
School District Code: 372803

File Totals - 2015 - Current Year File  
Town within School District Summary

RPS960/V04/L002

SWIS Code	Name	Parcels	Land Assessed Value	Total Assessed Value	School Taxable	Total Star Exempt Amt	Star Taxable
372800	Putnam Valley	4744	386,422,842	1,245,514,310	1,168,982,756	157,112,495	1,011,870,261
		4744	386,422,842	1,245,514,310	1,168,982,756	157,112,495	1,011,870,261

# Fiscal Accountability Summary

Commissioner's Regulations require that certain expenditure ratios for general-education and special-education students be reported and compared with ratios for similar districts and all public schools. The required ratios for this district are reported below.

The numbers used to compute the statistics on this page were collected on the State Aid Form A, the State Aid Form F, the School District Annual Financial Report (ST-3), and from the Student Information Repository System (SIRS). These data are from the 2012-13 school year.

<b>This School District</b>	<b>General Education</b>	<b>Special Education</b>
<b>Instructional Expenditures</b>	\$21,127,089	\$11,707,926
<b>Pupils</b>	1,825	225
<b>Expenditures Per Pupil</b>	\$11,576	\$52,035
<b>Similar District Group (Low Needs)</b>	<b>General Education</b>	<b>Special Education</b>
<b>Instructional Expenditures</b>	\$5,177,723,340	\$1,883,757,208
<b>Pupils</b>	385,963	49,898
<b>Expenditures Per Pupil</b>	\$13,415	\$37,752
<b>All School Districts</b>	<b>General Education</b>	<b>Special Education</b>
<b>Instructional Expenditures</b>	\$30,025,916,685	\$12,279,242,539
<b>Pupils</b>	2,666,629	410,379
<b>Expenditures Per Pupil</b>	\$11,260	\$29,922

Instructional Expenditures for General Education are K-12 expenditures for classroom instruction (excluding Special Education) plus a proration of building level administrative and instructional support expenditures. These expenditures include amounts for instruction of students with disabilities in a general-education setting. District expenditures, such as transportation, debt service and district-wide administration are not included.

The pupil count for General Education is K-12 average daily membership plus K-12 pupils for whom the district pays tuition to another school district. This number represents all pupils, including those classified as having disabilities and those not classified, excluding only students with disabilities placed out of district. Pupils resident in the district but attending a charter school are included. For districts in which a county jail is located, this number includes incarcerated youth to whom the district must provide an education program.

Instructional Expenditures for Special Education are K-12 expenditures for students with disabilities (including summer special education expenditures) plus a proration of building-level administrative and instructional support expenditures. District expenditures, such as transportation, debt service and district-wide administration are not included.

The pupil count for Special Education is a count of K-12 students with disabilities for the 2012-13 school year plus students for whom the district receives tuition from another district plus students for whom the district pays tuition to another district. Students attending the State schools at Rome and Batavia, private placements and out-of-state placements are included.

Instructional Expenditures Per Pupil is the simple arithmetic ratio of Instructional Expenditures to Pupils. The total cost of instruction for students with disabilities may include both general- and special-education expenditures. Special-education services provided in the general-education classroom may benefit students not classified as having disabilities.

### Total Expenditures Per Pupil

This School District	Similar District Group	NY State
\$24,316	\$24,283	\$21,118

Total Expenditures Per Pupil is the simple arithmetic ratio of Total Expenditures to Pupils. Total Expenditures include district expenditures for classroom instruction, as well as expenditures for transportation, debt service, community service and district-wide administration that are not included in the Instructional Expenditure values for General Education and Special Education. As such, the sum of General Education and Special Education Instructional Expenditures does not equal the Total Expenditures.

### Information about Students with Disabilities (2013 - 14)

Commissioner's Regulations require reporting students with disabilities by the percent of time they are in general education classrooms and the classification rate of students with disabilities. These data are to be compared with percentages for similar districts and all public schools. The required percentages for this district are reported below.

Student Placement (Percent of Time Inside Regular Classroom)	This School District		Similar District Group (Low Needs)	NY State
	Number of Students	Percent of Students	Percent of Students	Percent of Students
80% or more	116	50.9%	62.4%	58.4%

<b>40% - 79%</b>	68	29.8%	17.6%	11.8%
<b>Less than 40%</b>	29	12.7%	11.8%	21.5%
<b>Separate Settings</b>	15	6.6%	4.7%	5.7%
<b>Other Settings</b>	0	0.0%	3.4%	2.5%

The source data for the statistics in this table were reported through the Student Information Repository System (SIRS) and verified in Verification Report 5. The counts are numbers of students reported in the least restrictive environment categories for school-age programs (ages 6-21) on BEDS Day, which is the first Wednesday of the reporting year. The percentages represent the amount of time students with disabilities are in general-education classrooms, regardless of the amount and cost of special-education services they receive. Rounding of percentage values may cause them to sum to a number slightly different from 100%.

### School-age Students with Disabilities Classification Rate

<b>This School District</b>	<b>Similar District Group</b>	<b>NY State</b>
<b>13.4%</b>	<b>11.7%</b>	<b>13.2%</b>

This rate is a ratio of the count of school-age students with disabilities (ages 4-21) to the total enrollment of all school-age students in the school district, including students who are parentally placed in nonpublic schools located in the school district. The numerator includes all school-age students for whom a district has Committee on Special Education (CSE) responsibility to ensure the provision of special-education services. The denominator includes all school-age students who reside in the district. In the case of parentally placed students in nonpublic schools, it includes the number of students who attend the nonpublic schools located in the school district. Source data are drawn from the SIRS and from the Basic Education Data System (BEDS).

Similar District Groups are identified according to the Need-to-Resource-Capacity Index. More information is available on our [NRC capacity categories](#) page.

# PUTNAM VALLEY CSD Enrollment (2013 - 14)

**K-12 Enrollment: 1,777**

These enrollment data are collected as part of NYSED's Student Information Repository System (SIRS). These counts are as of "BEDS Day" which is typically the first Wednesday in October. Available are enrollment counts for public and charter school students by various demographics for the 2013 - 14 school year. For nonpublic school enrollment data please see the [Non-Public School Enrollment and Staff](#) information on our Information and Reporting Services webpage

## Students by Gender

Male		Female	
921	52%	856	48%

## Students by Ethnicity

American Indian or Alaska Native	Black or African American	Hispanic or Latino	Asian or Native Hawaiian/Other Pacific Islander	White	Multiracial
2	44	223	37	1,458	13
0%	2%	13%	2%	82%	1%

## Other Groups

Limited English Proficient Students		Students with Disabilities		Economically Disadvantaged Students	
14	1%	247	14%	281	16%

## Students by Grade

Kindergarten (Full Day)	1st Grade	2nd Grade	3rd Grade	4th Grade	5th Grade
109	125	117	118	135	128
6th Grade	Ungraded Elementary	7th Grade	8th Grade	9th Grade	10th Grade
142	2	140	130	147	154
11th Grade	12th Grade	Ungraded Secondary			
150	164	16			



## Average Class Size (2013 - 14)

Common Branch			
23			
Grade 8 English	Grade 8 Mathematics	Grade 8 Science	Grade 8 Social Studies
21	17	21	24
Grade 10 English	Grade 10 Mathematics	Grade 10 Science	Grade 10 Social Studies
25	22	19	25

## Free and Reduced-Price Lunch (2013 - 14)

Eligible for Free Lunch		Eligible for Reduced-Price Lunch	
198	11%	82	5%

## Attendance and Suspensions (2012 - 13)

Annual Attendance Rate	Student Suspensions	
94%	37	2%

## Teacher Turnover Rate (2012 - 13)

Turnover Rate of Teachers with Fewer Than Five Years of Experience	Turnover Rate of All Teachers
13%	6%

## Staff Counts (2013 - 14)

Principals	Assistant Principals	Other Professional Staff	Paraprofessionals
3	3	15	38

## Teacher Qualifications (2011-12 through 2013-14)

	2011 - 12	2012 - 13	2013 - 14
<b>Total Number of Teachers</b>	137	136	134
<b>Percent with No Valid Teaching Certificate</b>	0%	0%	0%
<b>Percent Teaching Out of Certification</b>	1%	4%	0%
<b>Percent with Fewer Than Three Years of Experience</b>	3%	4%	2%
<b>Percentage with Master's Degree Plus 30 Hours or Doctorate</b>	17%	15%	16%
<b>Total Number of Core Classes</b>	371	372	357
<b>Percent Not Taught by Highly Qualified Teachers in This District</b>	1%	6%	0%
<b>Percent Not Taught by Highly Qualified Teachers Statewide</b>	2%	3%	4%
<b>Percent Not Taught by Highly Qualified Teachers in High-Poverty Schools Statewide</b>	4%	6%	9%
<b>Percent Not Taught by Highly Qualified Teachers in Low-Poverty Schools Statewide</b>	1%	1%	1%
<b>Total Number of Classes</b>	505	526	500
<b>Percent Taught by Teachers Without Appropriate Certification</b>	2%	5%	1%

## High School Completers (2013 - 14)

Results by Student Group	Completers (Graduates + IEP Diplomas)	Graduates (Regents + Local Diplomas)	Regents Diploma		Regents with Advanced Designation	
	Number of Students	Number of Students	Number of Students	Percent of Graduates	Number of Students	Percent of Graduates
All Students	156	153	135	88%	90	59%
General Education	133	133	131	98%	90	68%
Students with Disabilities	23	20	4	20%	0	0%
Results by Student Group	Regents with CTE Endorsement		Local Diplomas		Commencement Credentials	
	Number of Students	Percent of Graduates	Number of Students	Percent of Graduates	Number of Students	Percent of Completers
All Students	0	0%	18	12%	3	2%
General Education	0	0%	2	2%	0	0%
Students with Disabilities	0	0%	16	80%	3	13%

## High School Non-completers (2013 - 14)

Results by Student Group	Dropped Out		Entered Approved High School Equivalency Preparation Program		Total Noncompleters	
	Number of Students	Percent of Students	Number of Students	Percent of Students	Number of Students	Percent of Students
<b>All Students</b>	6	1%	4	1%	10	2%
<b>General Education</b>	-	-	-	-	-	-
<b>Students with Disabilities</b>	-	-	-	-	-	-

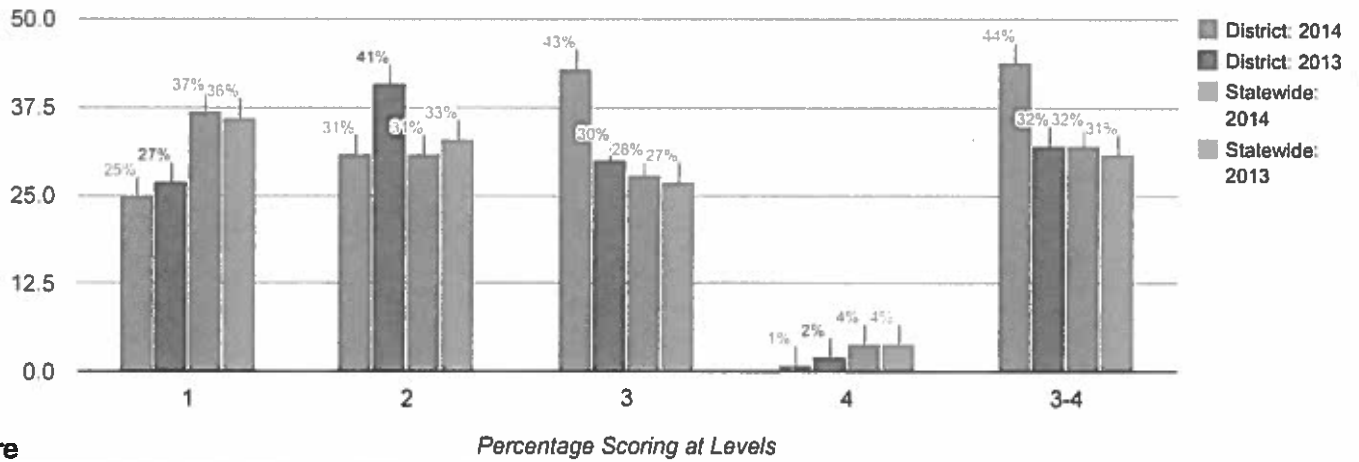
## Post-graduation Plans of Completers (2013 - 14)

Results by Student Group	To Four-Year College		To Two-Year College		To Other Post-Secondary		To the Military	
	Number of Students	Percent of Completers	Number of Students	Percent of Completers	Number of Students	Percent of Completers	Number of Students	Percent of Completers
<b>All Students</b>	89	57%	45	29%	4	3%	2	1%
<b>General Education</b>	89	67%	33	25%	3	2%	1	1%
<b>Students with Disabilities</b>	0	0%	12	52%	1	4%	1	4%

Results by Student Group	To Employment		To Adult Services		To Other Known Plans		Plan Unknown	
	Number of Students	Percent of Completers	Number of Students	Percent of Completers	Number of Students	Percent of Completers	Number of Students	Percent of Completers
<b>All Students</b>	9	6%	0	0%	1	1%	6	4%
<b>General Education</b>	5	4%	0	0%	0	0%	2	2%
<b>Students with Disabilities</b>	4	17%	0	0%	1	4%	4	17%

# Grade 3 English Language Arts



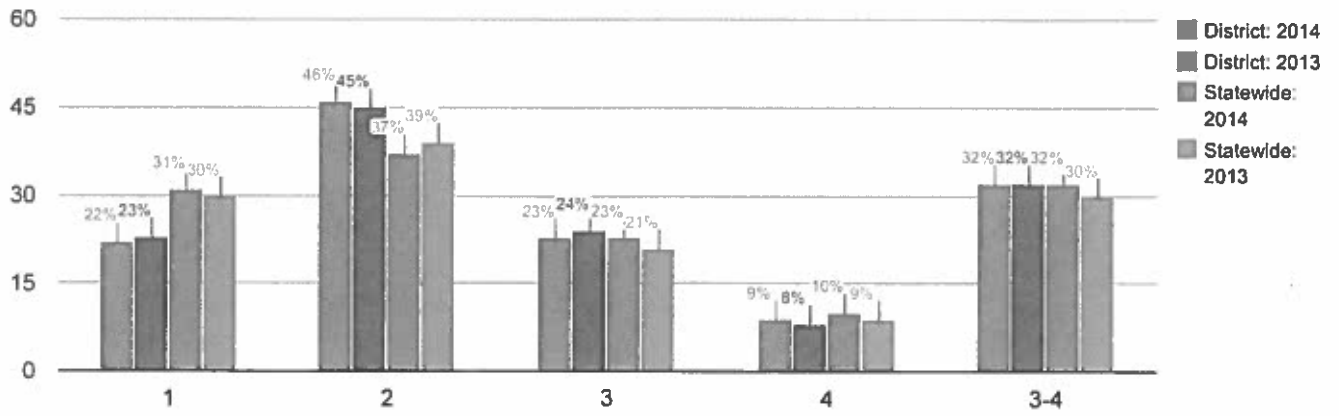
## Mean Score

## Percentage Scoring at Levels

2014	2013
306	304

Results by Student Group	2014						2013					
	Total Tested	Percent Scoring at Level(s)				% Proficient (Levels 3 and 4)	Total Tested	Percent Scoring at Level(s)				% Proficient (Levels 3 and 4)
		1	2	3	4			1	2	3	4	
<b>All Students</b>	119	25	31	43	1	44	133	27	41	30	2	32
<b>General Education</b>	107	20	32	48	1	49	117	21	44	32	2	34
<b>Students with Disabilities</b>	12	75	25	0	0	0	16	69	19	13	0	13
<b>Asian or Native Hawaiian/Other Pacific Islander</b>	5	-	-	-	-	-	3	-	-	-	-	-
<b>Black or African American</b>	3	-	-	-	-	-	5	-	-	-	-	-
<b>Hispanic or Latino</b>	13	54	31	15	0	15	9	33	44	22	0	22
<b>White</b>	97	23	31	45	1	46	116	26	41	31	2	33
<b>Multiracial</b>	1	-	-	-	-	-	0	0	0	0	0	0
<b>Small Group Total</b>	9	11	33	56	0	56	8	38	38	25	0	25
<b>Female</b>	57	18	33	49	0	49	59	20	46	32	2	34
<b>Male</b>	62	32	29	37	2	39	74	32	38	28	1	30
<b>English Proficient</b>	118	-	-	-	-	-	131	-	-	-	-	-
<b>Limited English Proficient</b>	1	-	-	-	-	-	2	-	-	-	-	-
<b>Economically Disadvantaged</b>	22	32	55	14	0	14	18	39	28	28	6	33
<b>Not Economically Disadvantaged</b>	97	24	26	49	1	51	115	25	43	30	1	31
<b>Not Migrant</b>	119	25	31	43	1	44	133	27	41	30	2	32

# Grade 4 English Language Arts



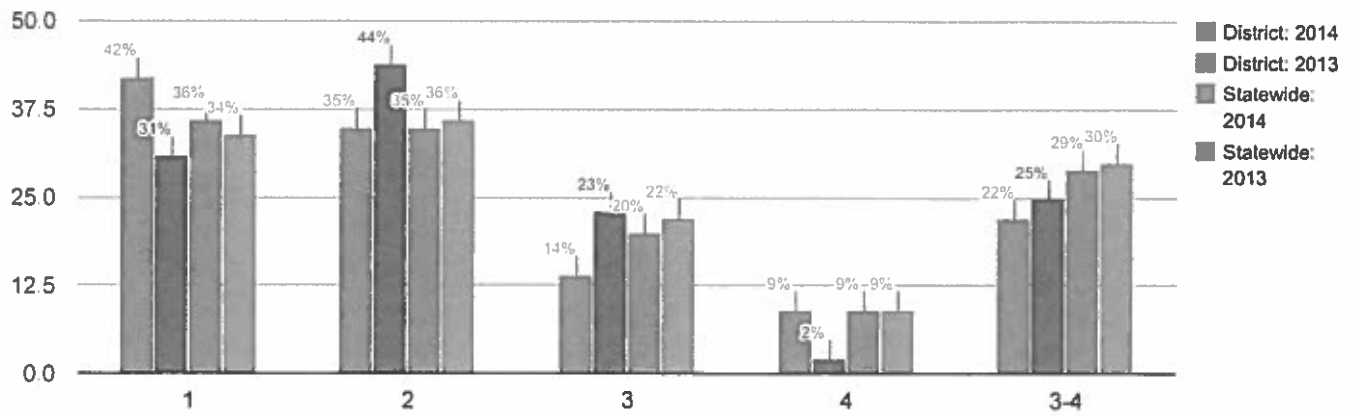
## Mean Score

## Percentage Scoring at Levels

2014	2013
304	303

Results by Student Group	2014						2013					
	Total Tested	Percent Scoring at Level(s)				% Proficient (Levels 3 and 4)	Total Tested	Percent Scoring at Level(s)				% Proficient (Levels 3 and 4)
		1	2	3	4			1	2	3	4	
All Students	132	22	46	23	9	32	128	23	45	24	8	32
General Education	112	15	51	24	10	34	107	14	48	29	9	38
Students with Disabilities	20	60	20	15	5	20	21	71	29	0	0	0
Asian or Native Hawaiian/Other Pacific Islander	3	-	-	-	-	-	5	-	-	-	-	-
Black or African American	5	-	-	-	-	-	4	-	-	-	-	-
Hispanic or Latino	9	33	44	22	0	22	24	25	58	17	0	17
White	115	20	49	22	10	31	95	23	42	26	8	35
Small Group Total	8	38	13	38	13	50	9	22	33	22	22	44
Female	60	18	47	20	15	35	63	14	51	24	11	35
Male	72	25	46	25	4	29	65	32	38	25	5	29
English Proficient	129	-	-	-	-	-	125	-	-	-	-	-
Limited English Proficient	3	-	-	-	-	-	3	-	-	-	-	-
Economically Disadvantaged	15	47	20	20	13	33	21	52	43	0	5	5
Not Economically Disadvantaged	117	19	50	23	9	32	107	18	45	29	8	37
Not Migrant	132	22	46	23	9	32	128	23	45	24	8	32

# Grade 5 English Language Arts



## Mean Score

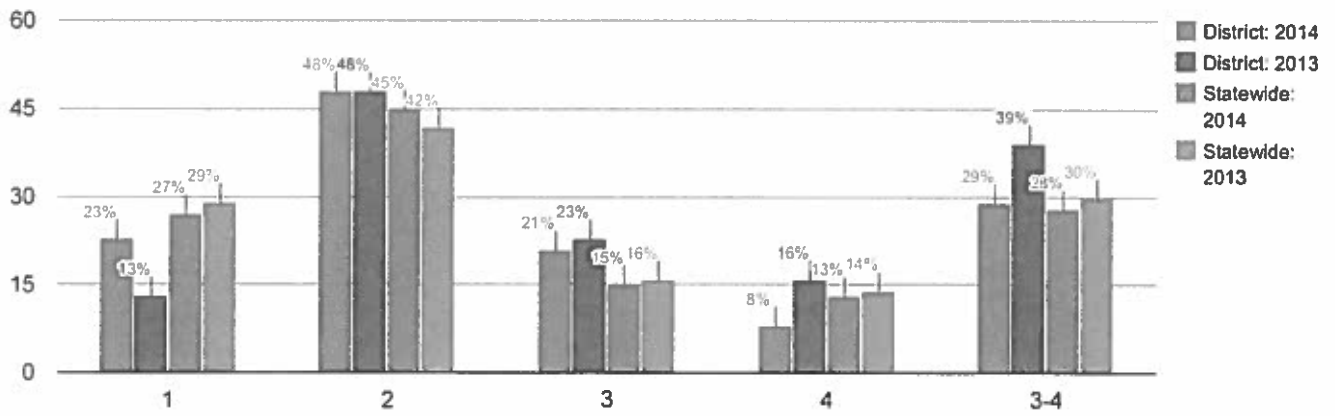
## Percentage Scoring at Levels

2014	2013
294	299

Results by Student Group	2014						2013					
	Total Tested	Percent Scoring at Level(s)				% Proficient (Levels 3 and 4)	Total Tested	Percent Scoring at Level(s)				% Proficient (Levels 3 and 4)
		1	2	3	4			1	2	3	4	
All Students	125	42	35	14	9	22	131	31	44	23	2	25
General Education	105	33	40	16	10	27	114	23	48	26	3	29
Students with Disabilities	20	90	10	0	0	0	17	88	12	0	0	0
Asian or Native Hawaiian/Other Pacific Islander	7	-	-	-	-	-	3	-	-	-	-	-
Black or African American	3	-	-	-	-	-	4	-	-	-	-	-
Hispanic or Latino	23	48	43	0	9	9	14	29	50	21	0	21
White	92	41	35	16	8	24	110	33	43	22	3	25
Small Group Total	10	40	20	20	20	40	7	14	43	43	0	43
Female	60	33	40	15	12	27	71	30	46	23	1	24
Male	65	51	31	12	6	18	60	33	40	23	3	27
English Proficient	124	-	-	-	-	-	129	-	-	-	-	-
Limited English Proficient	1	-	-	-	-	-	2	-	-	-	-	-
Economically Disadvantaged	17	76	18	0	6	6	27	48	37	15	0	15
Not Economically Disadvantaged	108	37	38	16	9	25	104	27	45	25	3	28
Not Migrant	125	42	35	14	9	22	131	31	44	23	2	25



# Grade 6 English Language Arts



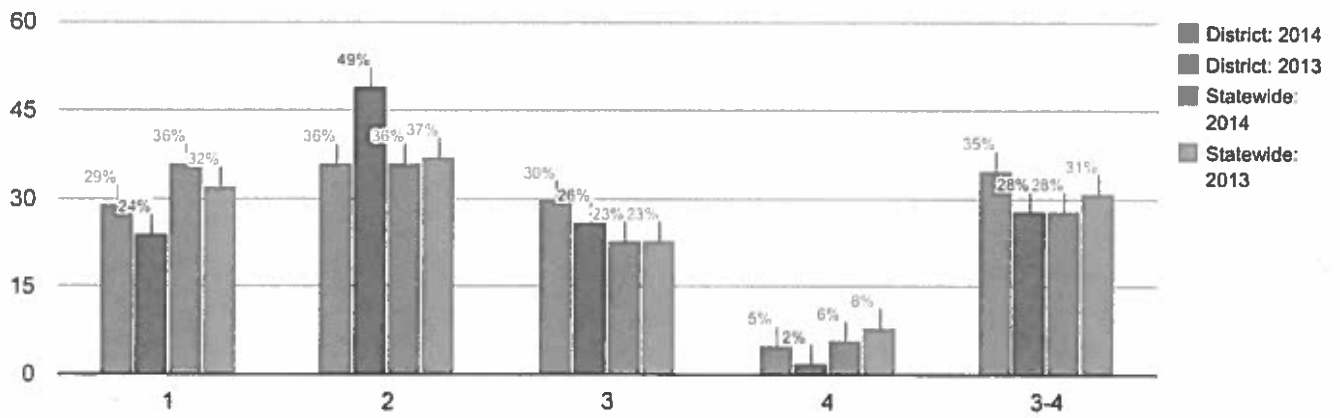
## Mean Score

## Percentage Scoring at Levels

2014	2013
301	311

Results by Student Group	2014						2013					
	Total Tested	Percent Scoring at Level(s)				% Proficient (Levels 3 and 4)	Total Tested	Percent Scoring at Level(s)				% Proficient (Levels 3 and 4)
		1	2	3	4			1	2	3	4	
All Students	135	23	48	21	8	29	136	13	48	23	16	39
General Education	119	17	50	24	9	33	121	6	50	26	18	44
Students with Disabilities	16	69	31	0	0	0	15	73	27	0	0	0
American Indian or Alaska Native	0	0	0	0	0	0	2	-	-	-	-	-
Asian or Native Hawaiian/Other Pacific Islander	1	-	-	-	-	-	0	0	0	0	0	0
Black or African American	4	-	-	-	-	-	2	-	-	-	-	-
Hispanic or Latino	20	40	50	10	0	10	15	-	-	-	-	-
White	110	20	46	24	10	34	117	13	50	22	15	38
Small Group Total	5	20	80	0	0	0	19	16	37	26	21	47
Female	75	21	49	19	11	29	69	9	39	30	22	52
Male	60	25	47	23	5	28	67	18	57	15	10	25
English Proficient	134	-	-	-	-	-	134	-	-	-	-	-
Limited English Proficient	1	-	-	-	-	-	2	-	-	-	-	-
Economically Disadvantaged	28	39	46	14	0	14	23	17	61	22	0	22
Not Economically Disadvantaged	107	19	49	22	10	33	113	12	45	23	19	42
Not Migrant	135	23	48	21	8	29	136	13	48	23	16	39

# Grade 7 English Language Arts



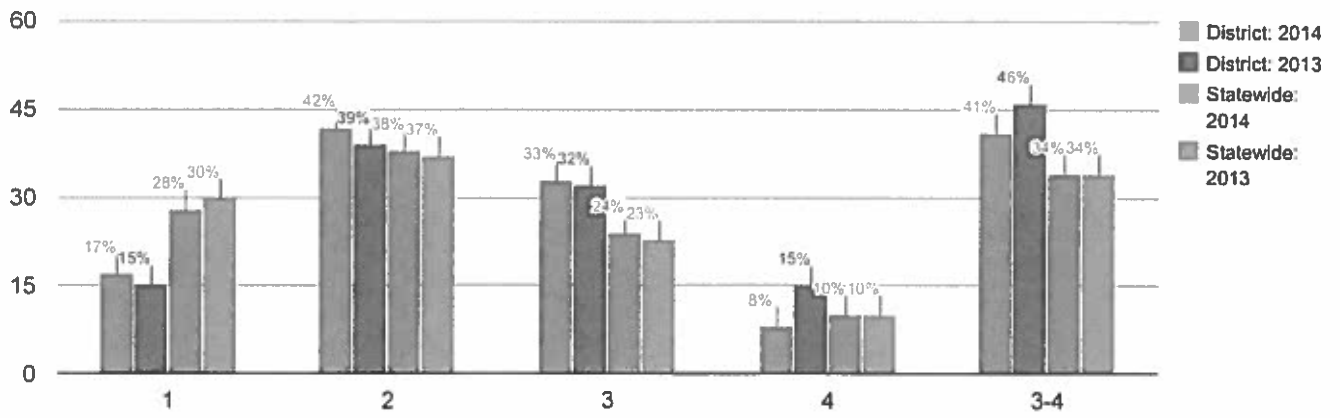
## Mean Score

Percentage Scoring at Levels

2014	2013
302	302

Results by Student Group	2014						2013					
	Total Tested	Percent Scoring at Level(s)				% Proficient (Levels 3 and 4)	Total Tested	Percent Scoring at Level(s)				% Proficient (Levels 3 and 4)
		1	2	3	4			1	2	3	4	
All Students	137	29	36	30	5	35	127	24	49	26	2	28
General Education	121	23	38	33	6	39	111	15	53	30	2	32
Students with Disabilities	16	75	19	6	0	6	16	81	19	0	0	0
American Indian or Alaska Native	2	-	-	-	-	-	0	0	0	0	0	0
Asian or Native Hawaiian/Other Pacific Islander	0	0	0	0	0	0	2	-	-	-	-	-
Black or African American	2	-	-	-	-	-	3	-	-	-	-	-
Hispanic or Latino	15	-	-	-	-	-	23	39	52	9	0	9
White	118	28	36	32	4	36	99	18	48	31	2	33
Small Group Total	19	37	37	16	11	26	5	60	40	0	0	0
Female	67	22	28	43	6	49	60	17	52	28	3	32
Male	70	36	43	17	4	21	67	30	46	24	0	24
English Proficient	135	-	-	-	-	-	126	-	-	-	-	-
Limited English Proficient	2	-	-	-	-	-	1	-	-	-	-	-
Economically Disadvantaged	23	52	22	26	0	26	20	40	50	10	0	10
Not Economically Disadvantaged	114	25	39	31	6	37	107	21	49	29	2	31
Not Migrant	137	29	36	30	5	35	127	24	49	26	2	28

# Grade 8 English Language Arts



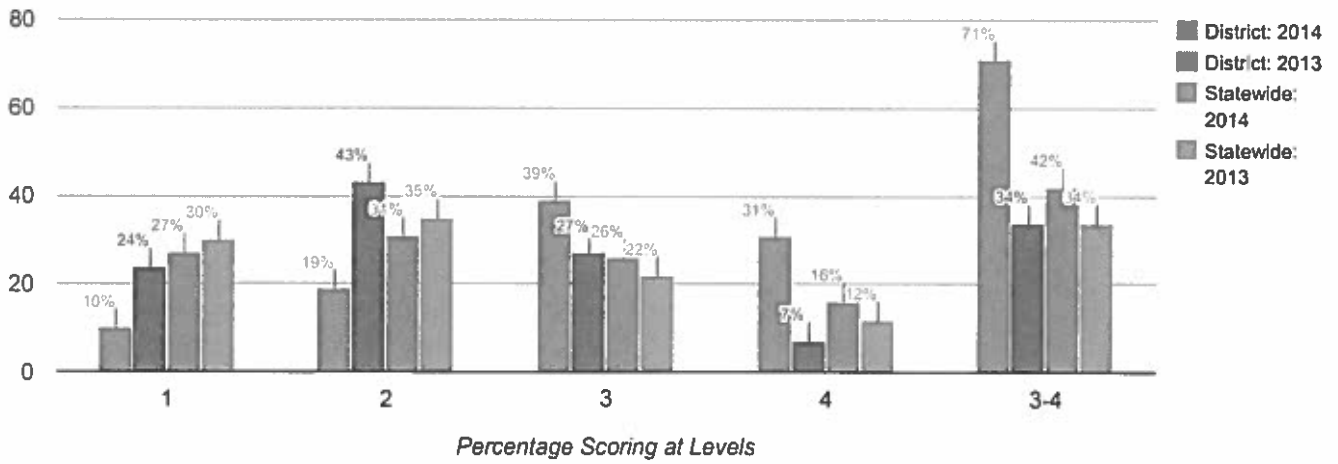
## Mean Score

## Percentage Scoring at Levels

2014	2013
305	311

Results by Student Group	2014						2013					
	Total Tested	Percent Scoring at Level(s)				% Proficient (Levels 3 and 4)	Total Tested	Percent Scoring at Level(s)				% Proficient (Levels 3 and 4)
		1	2	3	4			1	2	3	4	
All Students	132	17	42	33	8	41	149	15	39	32	15	46
General Education	113	8	45	37	10	47	137	9	41	34	16	50
Students with Disabilities	19	74	21	5	0	5	12	75	17	8	0	8
Asian or Native Hawaiian/Other Pacific Islander	3	-	-	-	-	-	8	-	-	-	-	-
Black or African American	3	-	-	-	-	-	3	-	-	-	-	-
Hispanic or Latino	23	30	43	22	4	26	16	38	31	19	13	31
White	103	14	40	37	10	47	122	12	41	33	14	47
Small Group Total	6	33	67	0	0	0	11	9	27	36	27	64
Female	62	8	42	39	11	50	78	18	31	36	15	51
Male	70	26	41	27	6	33	71	11	48	27	14	41
English Proficient	131	-	-	-	-	-	148	-	-	-	-	-
Limited English Proficient	1	-	-	-	-	-	1	-	-	-	-	-
Economically Disadvantaged	21	19	38	38	5	43	27	37	30	11	22	33
Not Economically Disadvantaged	111	17	42	32	9	41	122	10	41	36	13	49
Not Migrant	132	17	42	33	8	41	149	15	39	32	15	46

# Grade 3 Mathematics

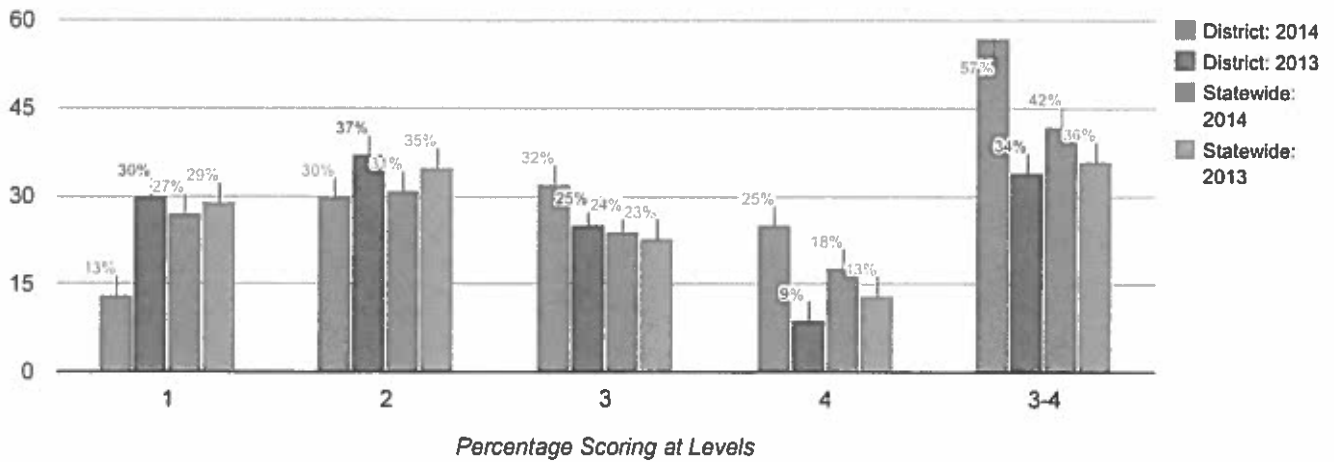


## Mean Score

2014	2013
323	302

Results by Student Group	2014						2013					
	Total Tested	Percent Scoring at Level(s)				% Proficient (Levels 3 and 4)	Total Tested	Percent Scoring at Level(s)				% Proficient (Levels 3 and 4)
		1	2	3	4			1	2	3	4	
All Students	119	10	19	39	31	71	134	24	43	27	7	34
General Education	107	5	20	41	35	76	118	19	47	28	7	35
Students with Disabilities	12	58	17	25	0	25	16	63	13	19	6	25
Asian or Native Hawaiian/Other Pacific Islander	5	-	-	-	-	-	3	-	-	-	-	-
Black or African American	3	-	-	-	-	-	5	-	-	-	-	-
Hispanic or Latino	13	23	23	46	8	54	9	33	44	22	0	22
White	97	9	19	40	32	72	117	22	44	27	7	34
Multiracial	1	-	-	-	-	-	0	0	0	0	0	0
Small Group Total	9	0	22	22	56	78	8	38	25	25	13	38
Female	57	9	23	42	26	68	60	18	52	25	5	30
Male	62	11	16	37	35	73	74	28	35	28	8	36
English Proficient	118	-	-	-	-	-	131	-	-	-	-	-
Limited English Proficient	1	-	-	-	-	-	3	-	-	-	-	-
Economically Disadvantaged	22	9	27	45	18	64	18	39	44	17	0	17
Not Economically Disadvantaged	97	10	18	38	34	72	116	22	42	28	8	36
Not Migrant	119	10	19	39	31	71	134	24	43	27	7	34

# Grade 4 Mathematics

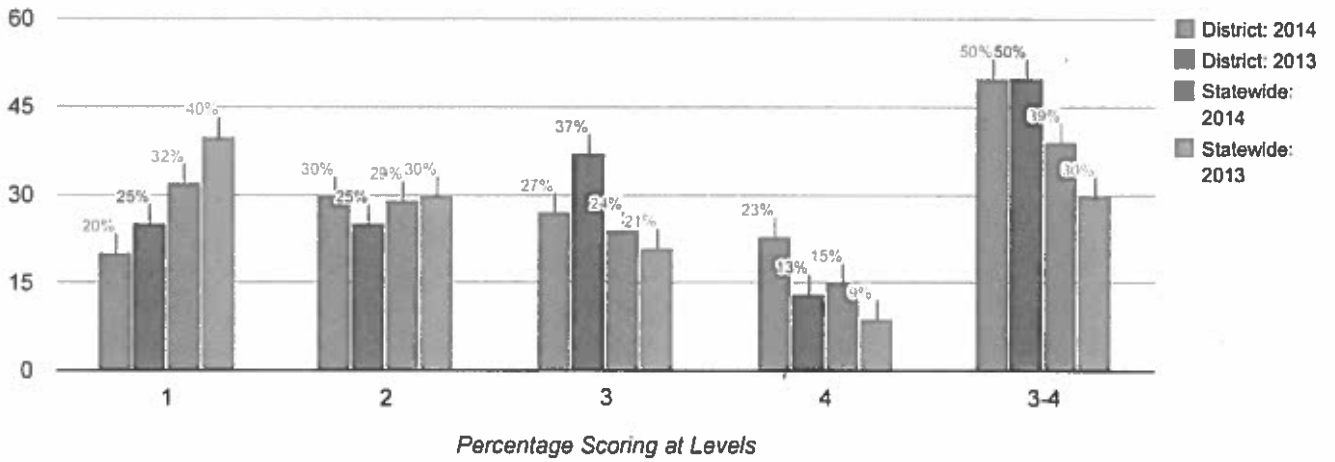


## Mean Score

2014	2013
318	296

Results by Student Group	2014						2013					
	Total Tested	Percent Scoring at Level(s)				% Proficient (Levels 3 and 4)	Total Tested	Percent Scoring at Level(s)				% Proficient (Levels 3 and 4)
		1	2	3	4			1	2	3	4	
All Students	133	13	30	32	25	57	128	30	37	25	9	34
General Education	111	5	31	37	27	64	106	20	41	29	10	40
Students with Disabilities	22	50	27	9	14	23	22	77	18	5	0	5
Asian or Native Hawaiian/Other Pacific Islander	3	-	-	-	-	-	5	-	-	-	-	-
Black or African American	5	-	-	-	-	-	4	-	-	-	-	-
Hispanic or Latino	9	22	67	11	0	11	24	33	54	8	4	13
White	116	12	28	34	26	60	95	29	35	25	11	36
Small Group Total	8	13	25	25	38	63	9	22	11	67	0	67
Female	61	10	36	31	23	54	63	27	40	24	10	33
Male	72	15	25	33	26	60	65	32	34	26	8	34
English Proficient	130	-	-	-	-	-	125	-	-	-	-	-
Limited English Proficient	3	-	-	-	-	-	3	-	-	-	-	-
Economically Disadvantaged	16	19	44	19	19	38	21	67	29	5	0	5
Not Economically Disadvantaged	117	12	28	34	26	60	107	22	38	29	10	39
Not Migrant	133	13	30	32	25	57	128	30	37	25	9	34

# Grade 5 Mathematics

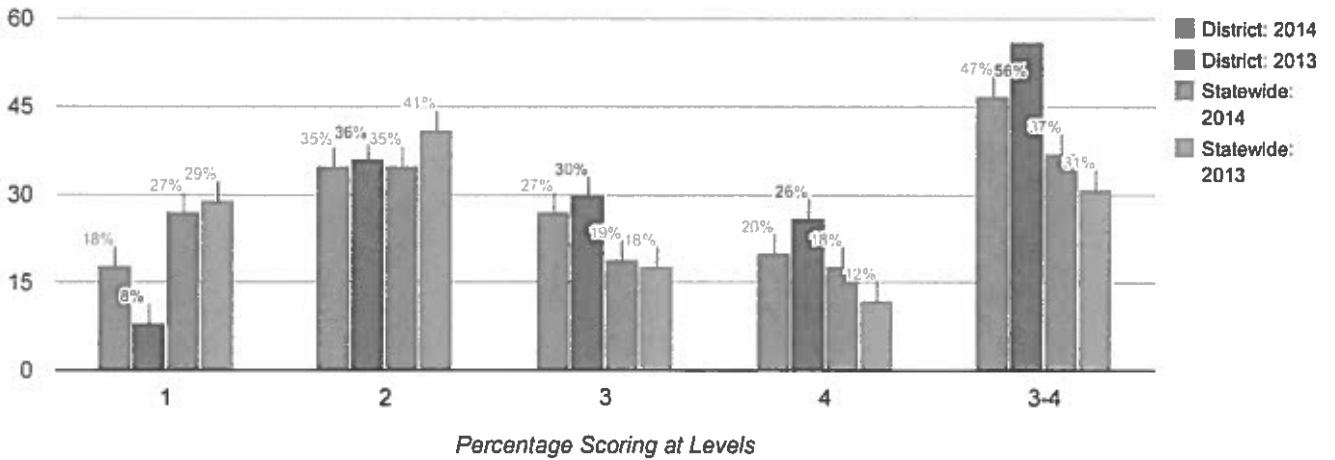


## Mean Score

2014	2013
316	311

Results by Student Group	2014						2013					
	Total Tested	Percent Scoring at Level(s)				% Proficient (Levels 3 and 4)	Total Tested	Percent Scoring at Level(s)				% Proficient (Levels 3 and 4)
		1	2	3	4			1	2	3	4	
All Students	122	20	30	27	23	50	132	25	25	37	13	50
General Education	102	11	31	31	26	58	115	17	27	42	15	57
Students with Disabilities	20	65	25	5	5	10	17	82	12	6	0	6
Asian or Native Hawaiian/Other Pacific Islander	7	-	-	-	-	-	3	-	-	-	-	-
Black or African American	3	-	-	-	-	-	4	-	-	-	-	-
Hispanic or Latino	22	18	45	23	14	36	15	40	13	27	20	47
White	90	20	29	28	23	51	110	24	26	39	11	50
Small Group Total	10	20	10	30	40	70	7	14	29	29	29	57
Female	58	16	34	24	26	50	71	28	25	37	10	46
Male	64	23	27	30	20	50	61	21	25	38	16	54
English Proficient	121	-	-	-	-	-	129	-	-	-	-	-
Limited English Proficient	1	-	-	-	-	-	3	-	-	-	-	-
Economically Disadvantaged	17	53	24	18	6	24	28	46	14	32	7	39
Not Economically Disadvantaged	105	14	31	29	26	54	104	19	28	38	14	53
Not Migrant	122	20	30	27	23	50	132	25	25	37	13	50

# Grade 6 Mathematics

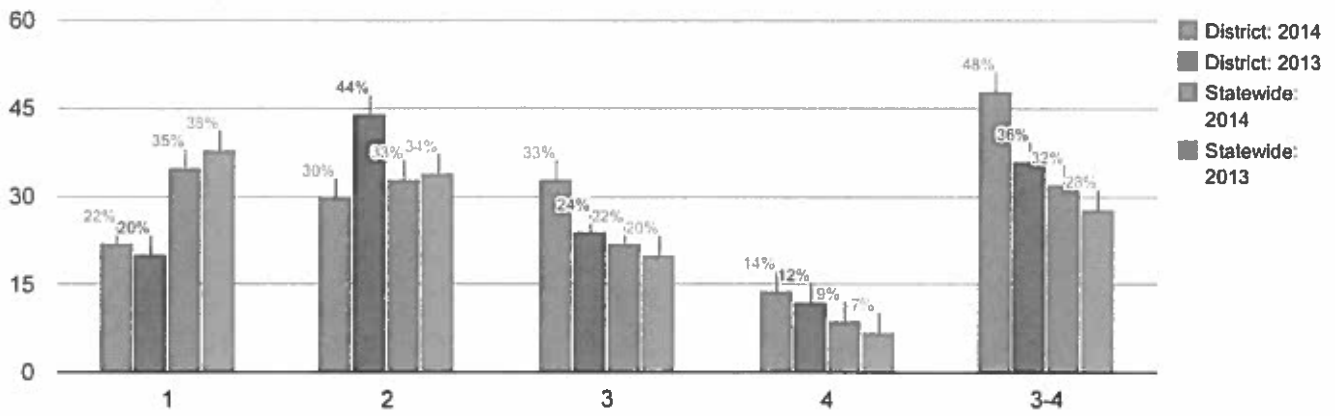


## Mean Score

2014	2013
312	318

Results by Student Group	2014						2013					
	Total Tested	Percent Scoring at Level(s)				% Proficient (Levels 3 and 4)	Total Tested	Percent Scoring at Level(s)				% Proficient (Levels 3 and 4)
		1	2	3	4			1	2	3	4	
All Students	130	18	35	27	20	47	133	8	36	30	26	56
General Education	116	13	35	29	22	52	119	3	35	33	29	61
Students with Disabilities	14	64	29	7	0	7	14	50	43	7	0	7
American Indian or Alaska Native	0	0	0	0	0	0	2	-	-	-	-	-
Asian or Native Hawaiian/Other Pacific Islander	1	-	-	-	-	-	0	0	0	0	0	0
Black or African American	4	-	-	-	-	-	2	-	-	-	-	-
Hispanic or Latino	19	26	37	16	21	37	15	-	-	-	-	-
White	106	17	34	29	20	49	114	6	36	32	26	58
Small Group Total	5	20	40	20	20	40	19	21	37	21	21	42
Female	71	24	34	25	17	42	68	9	40	24	28	51
Male	59	12	36	29	24	53	65	8	32	37	23	60
English Proficient	129	-	-	-	-	-	131	-	-	-	-	-
Limited English Proficient	1	-	-	-	-	-	2	-	-	-	-	-
Economically Disadvantaged	27	30	33	19	19	37	23	9	70	13	9	22
Not Economically Disadvantaged	103	16	35	29	20	50	110	8	29	34	29	63
Not Migrant	130	18	35	27	20	47	133	8	36	30	26	56

# Grade 7 Mathematics



## Mean Score

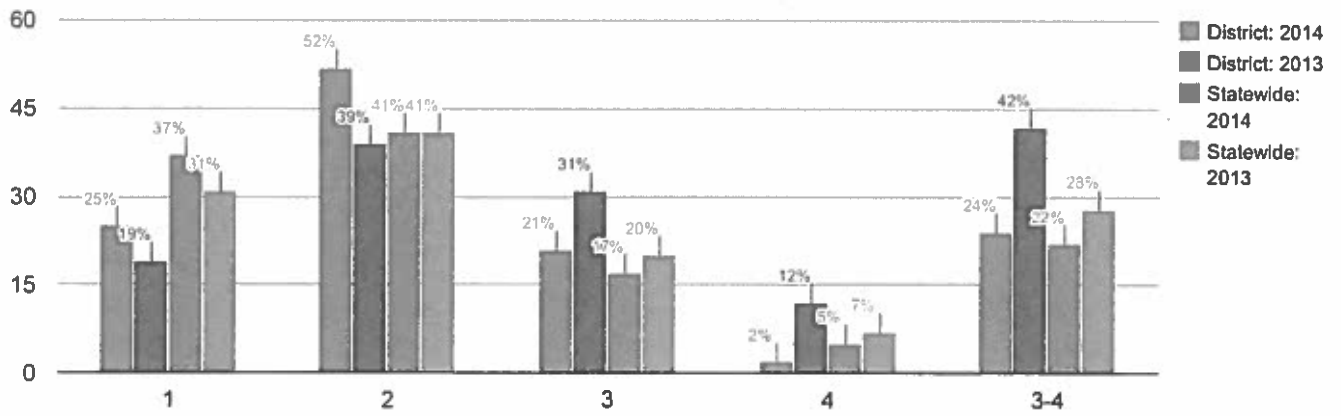
## Percentage Scoring at Levels

2014	2013
313	311

Results by Student Group	2014						2013					
	Total Tested	Percent Scoring at Level(s)				% Proficient (Levels 3 and 4)	Total Tested	Percent Scoring at Level(s)				% Proficient (Levels 3 and 4)
		1	2	3	4			1	2	3	4	
All Students	132	22	30	33	14	48	125	20	44	24	12	36
General Education	116	14	33	37	16	53	109	10	49	28	14	41
Students with Disabilities	16	81	13	6	0	6	16	88	13	0	0	0
American Indian or Alaska Native	2	-	-	-	-	-	0	0	0	0	0	0
Asian or Native Hawaiian/Other Pacific Islander	0	0	0	0	0	0	2	-	-	-	-	-
Black or African American	2	-	-	-	-	-	2	-	-	-	-	-
Hispanic or Latino	15	-	-	-	-	-	22	-	-	-	-	-
White	113	19	30	35	16	50	99	15	42	28	14	42
Small Group Total	19	37	32	26	5	32	26	38	50	8	4	12
Female	65	22	25	37	17	54	59	14	49	27	10	37
Male	67	22	36	30	12	42	66	26	39	21	14	35
English Proficient	130	-	-	-	-	-	124	-	-	-	-	-
Limited English Proficient	2	-	-	-	-	-	1	-	-	-	-	-
Economically Disadvantaged	22	36	36	27	0	27	19	42	47	11	0	11
Not Economically Disadvantaged	110	19	29	35	17	52	106	16	43	26	14	41
Not Migrant	132	22	30	33	14	48	125	20	44	24	12	36



# Grade 8 Mathematics



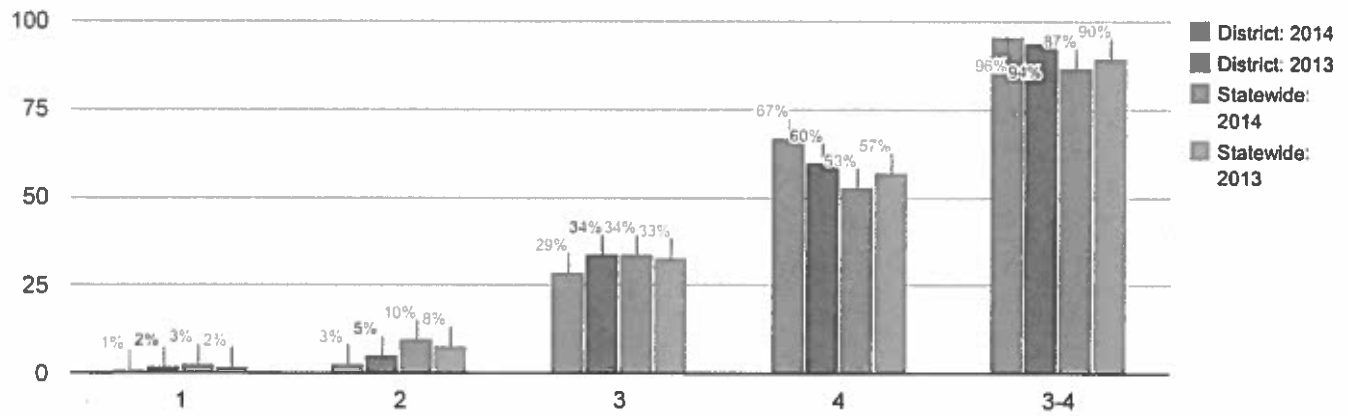
## Mean Score

## Percentage Scoring at Levels

2014	2013
299	312

Results by Student Group	2014						2013					
	Total Tested	Percent Scoring at Level(s)				% Proficient (Levels 3 and 4)	Total Tested	Percent Scoring at Level(s)				% Proficient (Levels 3 and 4)
		1	2	3	4			1	2	3	4	
All Students	89	25	52	21	2	24	147	19	39	31	12	42
General Education	72	14	57	26	3	29	135	15	39	33	13	46
Students with Disabilities	17	71	29	0	0	0	12	67	33	0	0	0
Asian or Native Hawaiian/Other Pacific Islander	3	-	-	-	-	-	8	-	-	-	-	-
Black or African American	3	-	-	-	-	-	3	-	-	-	-	-
Hispanic or Latino	19	21	63	16	0	16	16	31	38	31	0	31
White	64	25	48	23	3	27	120	18	41	33	9	42
Small Group Total	6	33	50	17	0	17	11	18	18	9	55	64
Female	40	15	63	18	5	23	77	19	38	31	12	43
Male	49	33	43	24	0	24	70	19	40	30	11	41
English Proficient	88	-	-	-	-	-	146	-	-	-	-	-
Limited English Proficient	1	-	-	-	-	-	1	-	-	-	-	-
Economically Disadvantaged	19	21	47	32	0	32	26	31	31	31	8	38
Not Economically Disadvantaged	70	26	53	19	3	21	121	17	40	31	12	43
Not Migrant	89	25	52	21	2	24	147	19	39	31	12	42

# Grade 4 Science



## Mean Score

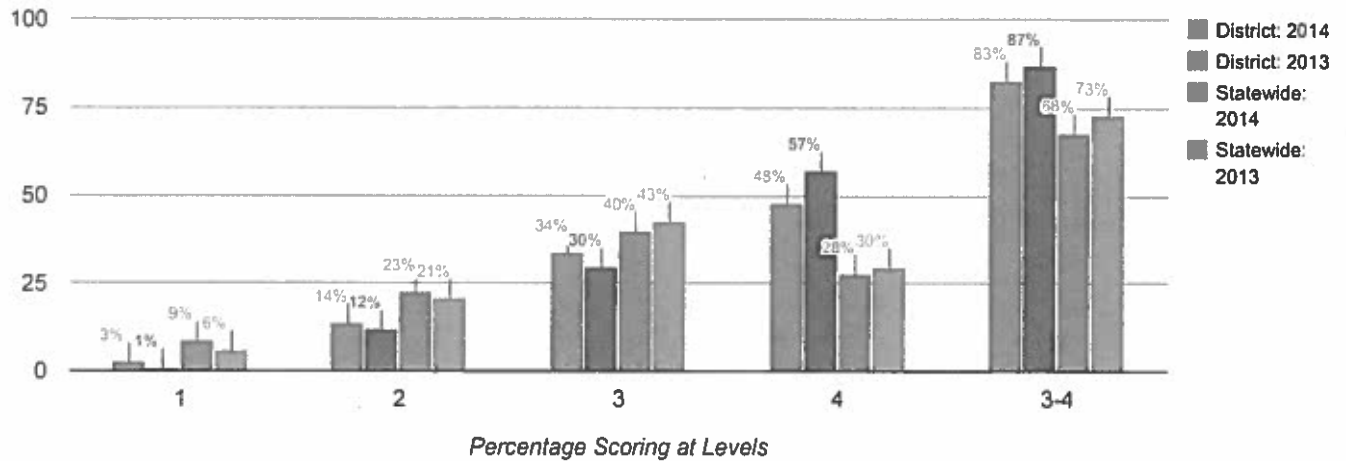
Percentage Scoring at Levels

2014	2013
86	84

Results by Student Group	2014						2013					
	Total Tested	Percent Scoring at Level(s)				% Proficient (Levels 3 and 4)	Total Tested	Percent Scoring at Level(s)				% Proficient (Levels 3 and 4)
		1	2	3	4			1	2	3	4	
All Students	134	1	3	29	67	96	126	2	5	34	60	94
General Education	111	0	0	27	73	100	106	1	1	31	67	98
Students with Disabilities	23	4	17	39	39	78	20	5	25	50	20	70
Asian or Native Hawaiian/Other Pacific Islander	3	-	-	-	-	-	5	-	-	-	-	-
Black or African American	5	-	-	-	-	-	3	-	-	-	-	-
Hispanic or Latino	8	13	13	38	38	75	23	4	9	30	57	87
White	118	0	2	29	69	98	95	1	4	37	58	95
Small Group Total	8	0	13	25	63	88	8	0	0	13	88	100
Female	61	0	3	31	66	97	62	0	2	37	61	98
Male	73	1	3	27	68	96	64	3	8	31	58	89
English Proficient	131	-	-	-	-	-	124	-	-	-	-	-
Limited English Proficient	3	-	-	-	-	-	2	-	-	-	-	-
Economically Disadvantaged	16	0	13	25	63	88	20	5	0	70	25	95
Not Economically Disadvantaged	118	1	2	30	68	97	106	1	6	27	66	93
Not Migrant	134	1	3	29	67	96	126	2	5	34	60	94

# Grade 8 Science

Data in the bar charts include those for grade 8 students who took the New York State Grade 8 Science Test and grade 8 students who took a Regents science test in lieu of this test. Mean scores and data in the table for grade 8 science include only those for grade 8 students who took the New York State Grade 8 Science Test.



## Mean Score

2014	2013
65	71

Results by Student Group	2014						2013					
	Total Tested	Percent Scoring at Level(s)				% Proficient (Levels 3 and 4)	Total Tested	Percent Scoring at Level(s)				% Proficient (Levels 3 and 4)
		1	2	3	4			1	2	3	4	
All Students	54	7	35	57	0	57	59	2	31	47	20	68
General Education	36	6	28	67	0	67	48	0	23	52	25	77
Students with Disabilities	18	11	50	39	0	39	11	9	64	27	0	27
Asian or Native Hawaiian/Other Pacific Islander	2	-	-	-	-	-	1	-	-	-	-	-
Black or African American	3	-	-	-	-	-	2	-	-	-	-	-
Hispanic or Latino	14	7	50	43	0	43	9	-	-	-	-	-
White	35	6	31	63	0	63	47	2	26	51	21	72
Small Group Total	5	20	20	60	0	60	12	0	50	33	17	50
Female	20	5	25	70	0	70	29	0	45	41	14	55
Male	34	9	41	50	0	50	30	3	17	53	27	80
English Proficient	53	-	-	-	-	-	58	-	-	-	-	-
Limited English Proficient	1	-	-	-	-	-	1	-	-	-	-	-
Economically Disadvantaged	12	8	50	42	0	42	15	7	33	47	13	60
Not Economically Disadvantaged	42	7	31	62	0	62	44	0	30	48	23	70
Not Migrant	54	7	35	57	0	57	59	2	31	47	20	68

## Grade 8 Students Taking a Regents Science Test

Accelerated grade 8 students who take a Regents science test in lieu of the New York State Grade 8 Science Test.

Results by Student Group	2014					2013						
	Total Tested	Percent Scoring at Level(s)				% Proficient (Levels 3 and 4)	Total Tested	Percent Scoring at Level(s)				% Proficient (Levels 3 and 4)
		1	2	3	4			1	2	3	4	
All Students	78	0	0	18	82	100	92	0	0	20	80	100

# Statewide Results on the National Assessment of Educational Progress: NAEP (2012 - 13)

## NAEP Grade 4 Reading

	% Below Basic	% Basic	% Proficient	% Advanced
All Students	30	33	28	9
American Indian or Alaska Native	*	*	*	*
Asian or Native Hawaiian/Other Pacific Islander	19	27	36	18
Black or African American	45	34	18	3
Hispanic or Latino	44	35	17	4
White	20	33	35	12
Multiracial	*	*	*	*
Students with Disabilities	69	22	7	2
Limited English Proficient	75	21	4	*
Economically Disadvantaged	43	34	19	4

## NAEP Grade 4 Mathematics

	% Below Basic	% Basic	% Proficient	% Advanced
All Students	18	42	33	7
American Indian or Alaska Native	*	*	*	*
Asian or Native Hawaiian/Other Pacific Islander	6	25	48	21
Black or African American	33	50	16	1
Hispanic or Latino	27	49	22	2
White	9	41	42	8
Multiracial	*	*	*	*
Students with Disabilities	43	42	14	1
Limited English Proficient	54	36	10	*
Economically Disadvantaged	26	48	23	3

\*Reporting standards not met.

## NAEP Grade 8 Reading

	% Below Basic	% Basic	% Proficient	% Advanced
All Students	24	41	30	5
American Indian or Alaska Native	*	*	*	*
Asian or Native Hawaiian/Other Pacific Islander	17	33	38	12
Black or African American	37	45	17	1
Hispanic or Latino	36	45	18	1
White	14	40	40	6
Multiracial	*	*	*	*
Students with Disabilities	56	36	8	*
Limited English Proficient	80	19	1	*
Economically Disadvantaged	35	44	20	1

## NAEP Grade 8 Mathematics

	% Below Basic	% Basic	% Proficient	% Advanced
All Students	28	40	24	8
American Indian or Alaska Native	*	*	*	*
Asian or Native Hawaiian/Other Pacific Islander	14	27	33	26
Black or African American	50	38	11	1
Hispanic or Latino	44	42	12	2
White	15	41	34	10
Multiracial	*	*	*	*
Students with Disabilities	66	27	6	1
Limited English Proficient	75	21	3	1
Economically Disadvantaged	42	39	15	4

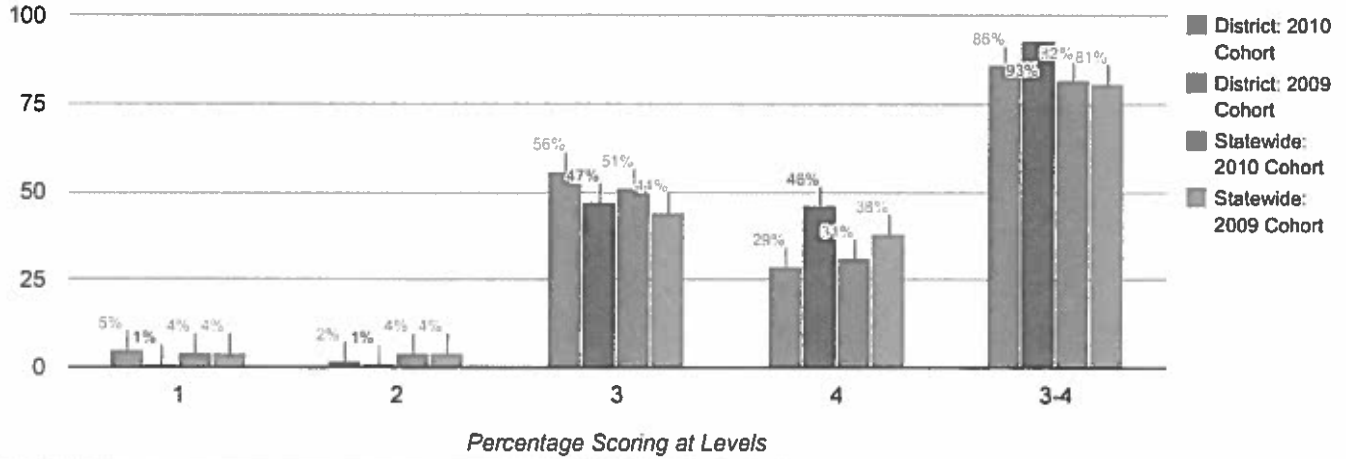
\*Reporting standards not met.

## NAEP Participation Rates

<b>Grade 4 Reading</b>	<b>Participation Rate</b>
<b>Students with Disabilities</b>	94
<b>Limited English Proficient</b>	93
<b>Grade 4 Mathematics</b>	<b>Participation Rate</b>
<b>Students with Disabilities</b>	94
<b>Limited English Proficient</b>	93
<b>Grade 8 Reading</b>	<b>Participation Rate</b>
<b>Students with Disabilities</b>	97
<b>Limited English Proficient</b>	91
<b>Grade 8 Mathematics</b>	<b>Participation Rate</b>
<b>Students with Disabilities</b>	89
<b>Limited English Proficient</b>	94

# Total Cohort Results in Secondary-Level English Language Arts after Four Years of Instruction

Total cohort results are those for New York State Regents and alternatives to Regents examinations only.

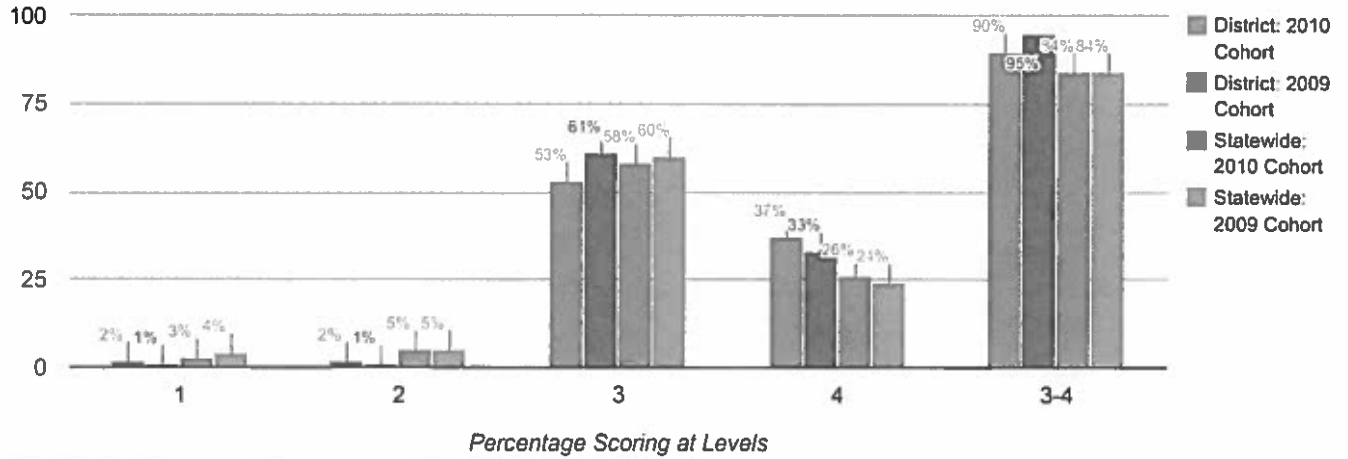


Results by Student Group	2010 Cohort						2009 Cohort					
	Number of Students	Percent Scoring at Level(s)				% Proficient (Levels 3 & above)	Number of Students	Percent Scoring at Level(s)				% Proficient (Levels 3 and 4)
		1	2	3	4 & above			1	2	3	4	
All Students	167	5	2	56	29	86	165	1	1	47	46	93
General Education	141	1	0	62	34	96	153	1	0	48	49	97
Students with Disabilities	26	31	15	27	4	31	12	8	8	42	8	50
Asian or Native Hawaiian/Other Pacific Islander	2	-	-	-	-	-	8	-	-	-	-	-
Black or African American	9	-	-	-	-	-	1	-	-	-	-	-
Hispanic or Latino	16	0	13	69	13	81	23	0	4	48	43	91
White	140	6	1	54	31	85	133	1	0	47	47	95
Small Group Total	11	0	0	64	36	100	9	11	0	44	33	78
Female	71	0	1	56	38	94	78	1	1	49	46	95
Male	96	9	3	56	23	79	87	1	0	46	46	92
English Proficient	167	5	2	56	29	86	162	-	-	-	-	-
Limited English Proficient	0	0	0	0	0	0	3	-	-	-	-	-
Economically Disadvantaged	19	16	5	53	21	74	18	0	0	61	28	89
Not Economically Disadvantaged	148	4	2	57	30	87	147	1	1	46	48	94
Not Migrant	167	5	2	56	29	86	165	1	1	47	46	93



# Total Cohort Results in Secondary-Level Mathematics after Four Years of Instruction

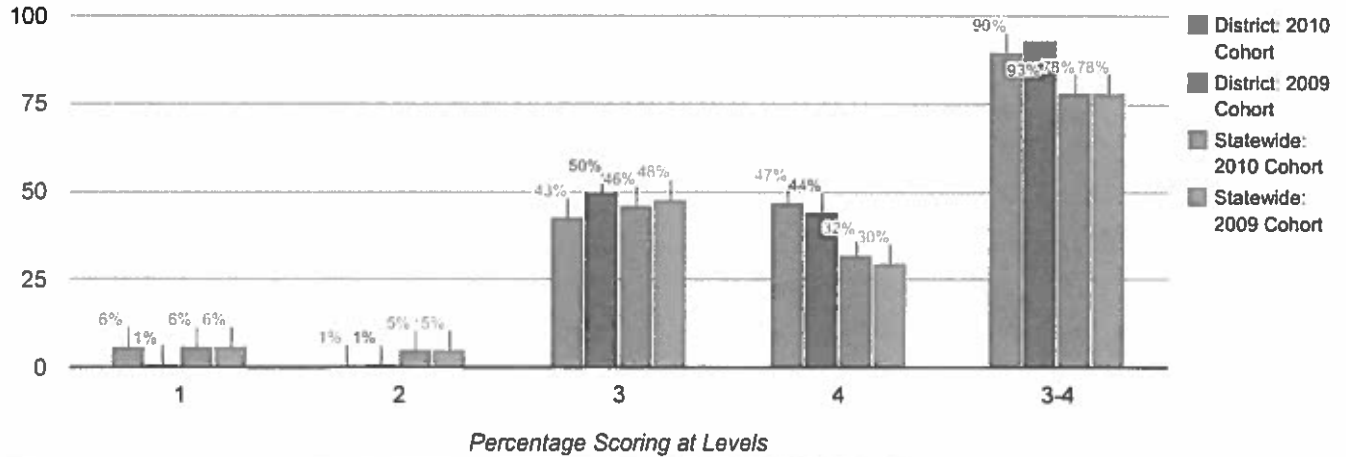
Total cohort results are those for New York State Regents and alternatives to Regents examinations only.



Results by Student Group	2010 Cohort						2009 Cohort					
	Number of Students	Percent Scoring at Level(s)				% Proficient (Levels 3 & above)	Number of Students	Percent Scoring at Level(s)				% Proficient (Levels 3 and 4)
		1	2	3	4 & above			1	2	3	4	
All Students	167	2	2	53	37	90	165	1	1	61	33	95
General Education	141	0	0	55	42	97	153	0	0	62	36	98
Students with Disabilities	26	15	15	42	8	50	12	8	8	50	0	50
Asian or Native Hawaiian/Other Pacific Islander	2	-	-	-	-	-	8	-	-	-	-	-
Black or African American	9	-	-	-	-	-	1	-	-	-	-	-
Hispanic or Latino	16	0	13	63	25	88	23	0	0	65	35	100
White	140	3	1	51	39	89	133	1	1	60	33	93
Small Group Total	11	0	0	73	27	100	9	0	0	67	33	100
Female	71	0	1	51	44	94	78	1	0	60	36	96
Male	96	4	3	55	31	86	87	0	1	62	31	93
English Proficient	167	2	2	53	37	90	162	-	-	-	-	-
Limited English Proficient	0	0	0	0	0	0	3	-	-	-	-	-
Economically Disadvantaged	19	5	5	68	11	79	18	0	6	72	17	89
Not Economically Disadvantaged	148	2	2	51	40	91	147	1	0	60	35	95
Not Migrant	167	2	2	53	37	90	165	1	1	61	33	95

# Total Cohort Results in Secondary-Level Global History and Geography after Four Years of Instruction

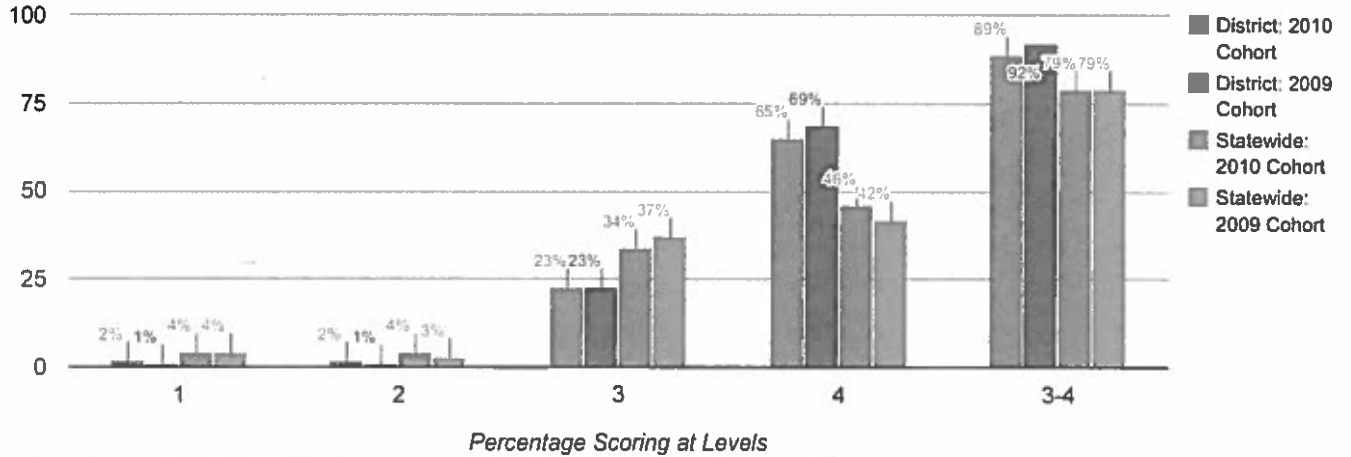
Total cohort results are those for New York State Regents and alternatives to Regents examinations only.



Results by Student Group	2010 Cohort						2009 Cohort					
	Number of Students	Percent Scoring at Level(s)				% Proficient (Levels 3 and 4)	Number of Students	Percent Scoring at Level(s)				% Proficient (Levels 3 and 4)
		1	2	3	4			1	2	3	4	
All Students	167	6	1	43	47	90	165	1	1	50	44	93
General Education	141	2	0	43	53	96	153	1	1	49	47	96
Students with Disabilities	26	27	8	42	12	54	12	8	0	58	0	58
Asian or Native Hawaiian/Other Pacific Islander	2	-	-	-	-	-	8	-	-	-	-	-
Black or African American	9	-	-	-	-	-	1	-	-	-	-	-
Hispanic or Latino	16	13	0	69	19	88	23	0	4	57	39	96
White	140	5	1	41	49	91	133	2	1	49	45	94
Small Group Total	11	9	9	27	55	82	9	0	0	44	33	78
Female	71	1	0	49	46	96	78	1	1	54	41	95
Male	96	9	2	39	47	85	87	1	1	46	46	92
English Proficient	167	6	1	43	47	90	162	-	-	-	-	-
Limited English Proficient	0	0	0	0	0	0	3	-	-	-	-	-
Economically Disadvantaged	19	26	0	63	11	74	18	0	6	67	22	89
Not Economically Disadvantaged	148	3	1	41	51	92	147	1	1	48	46	94
Not Migrant	167	6	1	43	47	90	165	1	1	50	44	93

# Total Cohort Results in Secondary-Level U.S. History and Government after Four Years of Instruction

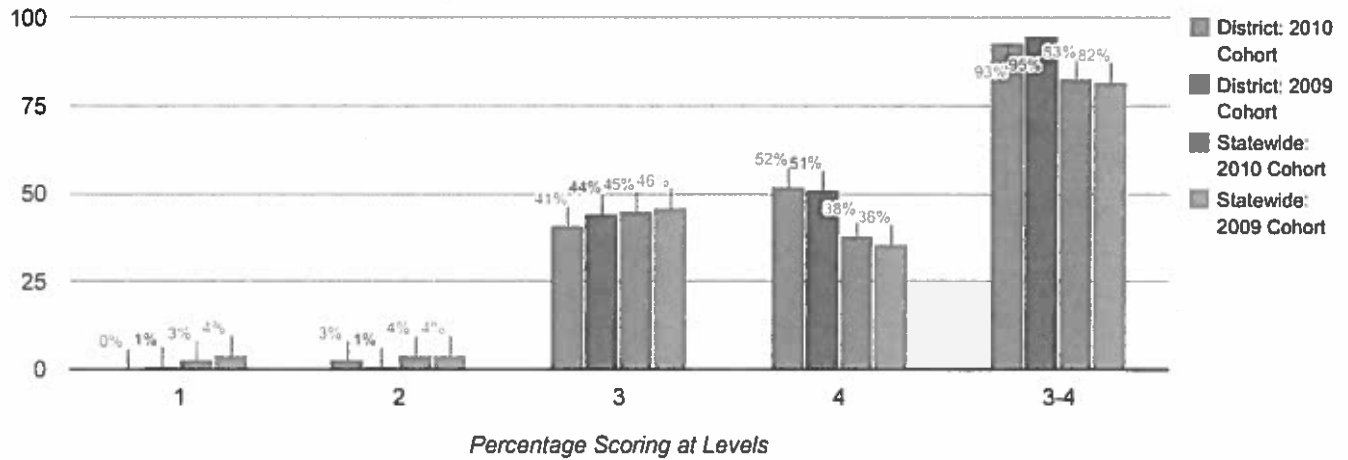
Total cohort results are those for New York State Regents and alternatives to Regents examinations only.



Results by Student Group	2010 Cohort						2009 Cohort					
	Number of Students	Percent Scoring at Level(s)				% Proficient (Levels 3 and 4)	Number of Students	Percent Scoring at Level(s)				% Proficient (Levels 3 and 4)
		1	2	3	4			1	2	3	4	
All Students	167	2	2	23	65	89	165	1	1	23	69	92
General Education	141	1	0	21	74	96	153	1	1	22	73	95
Students with Disabilities	26	12	15	35	15	50	12	8	8	33	17	50
Asian or Native Hawaiian/Other Pacific Islander	2	-	-	-	-	-	8	-	-	-	-	-
Black or African American	9	-	-	-	-	-	1	-	-	-	-	-
Hispanic or Latino	16	0	6	38	50	88	23	0	4	26	65	91
White	140	2	1	22	67	89	133	2	1	21	71	92
Small Group Total	11	9	9	18	64	82	9	0	0	44	44	89
Female	71	0	0	25	70	96	78	1	1	29	64	94
Male	96	4	4	22	61	83	87	1	1	17	74	91
English Proficient	167	2	2	23	65	89	162	-	-	-	-	-
Limited English Proficient	0	0	0	0	0	0	3	-	-	-	-	-
Economically Disadvantaged	19	5	11	37	42	79	18	0	11	39	39	78
Not Economically Disadvantaged	148	2	1	22	68	90	147	1	0	21	73	94
Not Migrant	167	2	2	23	65	89	165	1	1	23	69	92

# Total Cohort Results in Secondary-Level Science after Four Years of Instruction

Total cohort results are those for New York State Regents and alternatives to Regents examinations only.



Results by Student Group	2010 Cohort						2009 Cohort					
	Number of Students	Percent Scoring at Level(s)				% Proficient (Levels 3 and 4)	Number of Students	Percent Scoring at Level(s)				% Proficient (Levels 3 and 4)
		1	2	3	4			1	2	3	4	
<b>All Students</b>	167	0	3	41	52	93	165	1	1	44	51	95
<b>General Education</b>	141	0	1	39	60	99	153	0	1	44	54	98
<b>Students with Disabilities</b>	26	0	15	54	12	65	12	8	8	33	17	50
<b>Asian or Native Hawaiian/Other Pacific Islander</b>	2	-	-	-	-	-	8	-	-	-	-	-
<b>Black or African American</b>	9	-	-	-	-	-	1	-	-	-	-	-
<b>Hispanic or Latino</b>	16	0	6	56	38	94	23	0	4	57	39	96
<b>White</b>	140	0	1	41	54	94	133	1	1	42	53	95
<b>Small Group Total</b>	11	0	18	27	55	82	9	0	0	33	56	89
<b>Female</b>	71	0	0	39	59	99	78	1	1	45	51	96
<b>Male</b>	96	0	5	43	47	90	87	0	1	43	51	93
<b>English Proficient</b>	167	0	3	41	52	93	162	-	-	-	-	-
<b>Limited English Proficient</b>	0	0	0	0	0	0	3	-	-	-	-	-
<b>Economically Disadvantaged</b>	19	0	5	47	42	89	18	0	0	67	28	94
<b>Not Economically Disadvantaged</b>	148	0	3	41	53	94	147	1	1	41	54	95
<b>Not Migrant</b>	167	0	3	41	52	93	165	1	1	44	51	95

# Regents Examination Results (2013 - 14)

Results by Student Group	Comprehensive English				Integrated Algebra			
	Total Tested	Percent of students scoring at or above			Total Tested	Percent of students scoring at or above		
		55	65	85		55	65	85
<b>All Students</b>	157	97	92	41	167	97	91	32
<b>General Education</b>	145	99	94	43	144	98	95	38
<b>Students with Disabilities</b>	12	75	75	8	23	91	65	0
<b>Asian or Native Hawaiian/Other Pacific Islander</b>	5	-	-	-	5	-	-	-
<b>Black or African American</b>	4	-	-	-	1	-	-	-
<b>Hispanic or Latino</b>	16	88	88	13	23	91	83	22
<b>White</b>	132	98	93	45	138	98	93	34
<b>Small Group Total</b>	9	100	89	22	6	100	83	33
<b>Female</b>	81	96	96	60	79	97	92	35
<b>Male</b>	76	97	88	20	88	97	90	30
<b>English Proficient</b>	157	97	92	41	167	97	91	32
<b>Economically Disadvantaged</b>	26	88	77	27	23	87	78	9
<b>Not Economically Disadvantaged</b>	131	98	95	44	144	99	93	36
<b>Not Migrant</b>	157	97	92	41	167	97	91	32

Results by Student Group	English Language Arts (Common Core)						Algebra I (Common Core)					
	Total Tested	Percent of students scoring at					Total Tested	Percent of students scoring at				
		Level 1	Level 2	Level 3	Level 4	Level 5		Level 1	Level 2	Level 3	Level 4	Level 5
All Students	140	7	4	22	36	31	124	5	15	60	18	2
General Education	133	3	3	23	38	33	102	1	10	66	22	2
Students with Disabilities	7	86	14	0	0	0	22	23	41	36	0	0
Asian or Native Hawaiian/Other Pacific Islander	3	-	-	-	-	-	5	-	-	-	-	-
Black or African American	4	-	-	-	-	-	2	-	-	-	-	-
Hispanic or Latino	16	31	0	13	44	13	21	10	29	43	19	0
White	117	4	3	23	36	33	96	4	13	65	18	1
Small Group Total	7	0	14	29	14	43	7	0	14	57	14	14
Female	74	5	3	15	34	43	58	5	17	57	19	2
Male	66	9	5	30	38	18	66	5	14	64	17	2
English Proficient	140	7	4	22	36	31	124	5	15	60	18	2
Economically Disadvantaged	21	10	5	10	67	10	20	10	20	55	10	5
Not Economically Disadvantaged	119	7	3	24	30	35	104	4	14	62	19	1
Not Migrant	140	7	4	22	36	31	124	5	15	60	18	2

Results by Student Group	Geometry				Algebra 2/Trigonometry			
	Total Tested	Percent of students scoring at or above			Total Tested	Percent of students scoring at or above		
		55	65	85		55	65	85
All Students	140	94	81	29	111	89	76	31
General Education	132	93	81	30	111	89	76	31
Students with Disabilities	8	100	75	0	0	0	0	0
Asian or Native Hawaiian/Other Pacific Islander	5	-	-	-	2	-	-	-
Black or African American	4	-	-	-	2	-	-	-
Hispanic or Latino	13	100	85	8	10	-	-	-
White	118	93	81	29	97	91	77	30
Small Group Total	9	89	78	56	14	79	64	36
Female	68	93	75	31	56	84	75	38
Male	72	94	86	26	55	95	76	24
English Proficient	140	94	81	29	111	89	76	31
Economically Disadvantaged	14	93	86	14	10	80	70	20
Not Economically Disadvantaged	126	94	80	30	101	90	76	32
Not Migrant	140	94	81	29	111	89	76	31

Results by Student Group	Global History and Geography				U.S. History & Government			
	Total Tested	Percent of students scoring at or above			Total Tested	Percent of students scoring at or above		
		55	65	85		55	65	85
All Students	172	94	86	45	153	97	95	74
General Education	144	96	92	53	140	99	99	79
Students with Disabilities	28	82	54	4	13	77	54	15
Asian or Native Hawaiian/Other Pacific Islander	4	-	-	-	4	-	-	-
Black or African American	5	-	-	-	5	-	-	-
Hispanic or Latino	22	91	77	23	18	94	89	50
White	141	95	88	49	126	98	96	77
Small Group Total	9	78	78	44	9	89	89	78
Female	76	92	83	41	82	98	96	77
Male	96	95	89	49	71	97	93	70
English Proficient	172	94	86	45	153	97	95	74
Economically Disadvantaged	22	77	68	23	23	96	87	65
Not Economically Disadvantaged	150	96	89	49	130	98	96	75
Not Migrant	172	94	86	45	153	97	95	74



Results by Student Group	Living Environment				Physical Setting/Earth Science			
	Total Tested	Percent of students scoring at or above			Total Tested	Percent of students scoring at or above		
		55	65	85		55	65	85
<b>All Students</b>	158	100	95	51	116	97	93	65
<b>General Education</b>	142	100	98	55	107	98	95	66
<b>Students with Disabilities</b>	16	100	69	13	9	89	67	44
<b>Asian or Native Hawaiian/Other Pacific Islander</b>	7	-	-	-	2	-	-	-
<b>Black or African American</b>	4	-	-	-	0	0	0	0
<b>Hispanic or Latino</b>	20	100	95	25	16	-	-	-
<b>White</b>	127	100	95	54	98	97	94	69
<b>Small Group Total</b>	11	100	91	64	18	100	89	39
<b>Female</b>	84	100	93	51	53	96	94	66
<b>Male</b>	74	100	97	50	63	98	92	63
<b>English Proficient</b>	158	100	95	51	116	97	93	65
<b>Economically Disadvantaged</b>	30	100	87	27	15	100	87	47
<b>Not Economically Disadvantaged</b>	128	100	97	56	101	97	94	67
<b>Not Migrant</b>	158	100	95	51	116	97	93	65

Results by Student Group	Physical Setting/Chemistry			Physical Setting/Physics				
	Total Tested	Percent of students scoring at or above			Total Tested	Percent of students scoring at or above		
		55	65	85		55	65	85
All Students	107	95	77	19	70	97	87	37
General Education	106	-	-	-	70	97	87	37
Students with Disabilities	1	-	-	-	0	0	0	0
Asian or Native Hawaiian/Other Pacific Islander	2	-	-	-	3	-	-	-
Black or African American	3	-	-	-	2	-	-	-
Hispanic or Latino	6	83	67	17	4	-	-	-
White	96	96	78	19	61	97	89	39
Small Group Total	5	100	60	20	9	100	78	22
Female	46	91	65	17	33	97	91	42
Male	61	98	85	20	37	97	84	32
English Proficient	107	95	77	19	70	97	87	37
Economically Disadvantaged	7	100	57	0	6	100	100	17
Not Economically Disadvantaged	100	95	78	20	64	97	86	39
Not Migrant	107	95	77	19	70	97	87	37

## Regents Competency Test Results (2013 - 14)

Results by Student Group	Reading		Writing		Math	
	Total Tested	Percent Passing	Total Tested	Percent Passing	Total Tested	Percent Passing
All Students	1	-	0	0	2	-
Students with Disabilities	1	-	0	0	2	-
White	1	-	0	0	2	-
Small Group Total	1	-	0	0	2	-
Female	0	0	0	0	0	0
Male	1	-	0	0	2	-
English Proficient	1	-	0	0	2	-
Economically Disadvantaged	1	-	0	0	1	-
Not Economically Disadvantaged	0	0	0	0	1	-
Not Migrant	1	-	0	0	2	-

Results by Student Group	Global Studies		U.S. History & Government		Science	
	Total Tested	Percent Passing	Total Tested	Percent Passing	Total Tested	Percent Passing
All Students	2	-	3	-	0	0
Students with Disabilities	2	-	3	-	0	0
White	2	-	3	-	0	0
Small Group Total	2	-	3	-	0	0
Female	1	-	1	-	0	0
Male	1	-	2	-	0	0
English Proficient	2	-	3	-	0	0
Economically Disadvantaged	1	-	2	-	0	0
Not Economically Disadvantaged	1	-	1	-	0	0
Not Migrant	2	-	3	-	0	0

# New York State Alternate Assessment (NYSAA) Results (2013 - 14)

Grade/Subject	Total Tested	Number Scoring at Level(s)				% Proficient (Levels 3 and 4)
		1	2	3	4	
Grade 4 ELA	1	-	-	-	-	-
Grade 4 Math	1	-	-	-	-	-
Grade 4 Science	1	-	-	-	-	-
Grade 7 ELA	2	-	-	-	-	-
Grade 7 Math	2	-	-	-	-	-
Secondary-Level ELA	1	-	-	-	-	-
Secondary-Level Math	1	-	-	-	-	-
Secondary-Level Science	1	-	-	-	-	-
Secondary-Level Social Studies	1	-	-	-	-	-

# New York State English as a Second Language Achievement Test (NYSESLAT) Results (2013 - 14)

Grade 2	Total Tested	Percent of Students Scoring at Level(s)			
		Beginning	Intermediate	Advanced	Proficient
All Students	2	-	-	-	-
Students with Disabilities	2	-	-	-	-
Grade 3	Total Tested	Percent of Students Scoring at Level(s)			
		Beginning	Intermediate	Advanced	Proficient
All Students	1	-	-	-	-
Students with Disabilities	1	-	-	-	-
Grade 4	Total Tested	Percent of Students Scoring at Level(s)			
		Beginning	Intermediate	Advanced	Proficient
All Students	3	-	-	-	-
General Education	1	-	-	-	-
Students with Disabilities	2	-	-	-	-
Grade 5	Total Tested	Percent of Students Scoring at Level(s)			
		Beginning	Intermediate	Advanced	Proficient
All Students	1	-	-	-	-
General Education	1	-	-	-	-
Grade 6	Total Tested	Percent of Students Scoring at Level(s)			
		Beginning	Intermediate	Advanced	Proficient
All Students	1	-	-	-	-
Students with Disabilities	1	-	-	-	-
Grade 7	Total Tested	Percent of Students Scoring at Level(s)			
		Beginning	Intermediate	Advanced	Proficient
All Students	2	-	-	-	-
Students with Disabilities	2	-	-	-	-
Grade 8	Total Tested	Percent of Students Scoring at Level(s)			
		Beginning	Intermediate	Advanced	Proficient
All Students	1	-	-	-	-
Students with Disabilities	1	-	-	-	-
Grade 11	Total Tested	Percent of Students Scoring at Level(s)			
		Beginning	Intermediate	Advanced	Proficient
All Students	1	-	-	-	-
General Education	1	-	-	-	-

Grade 12	Total Tested	Percent of Students Scoring at Level(s)			
		Beginning	Intermediate	Advanced	Proficient
All Students	1	-	-	-	-
Students with Disabilities	1	-	-	-	-

# Elementary/Middle-Level English Language Arts Results for Accountability

All accountability groups made AYP: YES

Student Group	Made AYP	Tested 95%	Students Enrolled During the Test Administration Period	Percent of Enrolled Students with Valid Test Scores	PI >= EAMO or Safe Harbor Target	Tested Students Enrolled on BEDS Day	PI	EAMO	Safe Harbor Target
All Students	✓	✓	805	97%	✓	774	111	85	85
American Indian or Alaska Native	—	—	2	—	—	2	—	—	—
Black or African American	—	—	20	—	—	20	—	—	—
Hispanic or Latino	✓	✓	104	99%	✓	100	84	64	64
Asian or Native Hawaiian/Other Pacific Islander	—	—	21	—	—	17	—	—	—
White	✓	✓	659	97%	✓	634	115	105	105
Multiracial	—	—	1	—	—	1	—	—	—
Students With Disabilities	✓	✓	218*	96%*	✓	109†	39†	38	38
Limited English Proficient	—	—	9	—	—	9	—	—	—
Economically Disadvantaged	✓	✓	134	96%	✓	128	84	66	66

Results for the following groups are NOT used to determine AYP.

Student Group	Students Enrolled During the Test Administration Period	Percent of Enrolled Students with Valid Test Scores	Tested Students Enrolled on BEDS Day	PI
Not American Indian or Alaska Native	805	97%	772	111
Not Black or African American	787	97%	754	112
Not Hispanic or Latino	703	97%	674	115
Not Asian or Native Hawaiian/Other Pacific Islander	786	97%	757	111
Not White	148	98%	140	91
Not Multiracial	806	97%	773	111
General Education	693	98%	669	123
English Proficient	798	97%	765	112
Not Economically Disadvantaged	673	97%	646	117
Male	415	96%	395	99
Female	392	98%	379	123
Migrant	0	—	0	—
Not Migrant	807	97%	774	111

✓ Yes

✗ No

— There were fewer than 40 students enrolled during the test administration period, so the Percent of Enrolled Students with Valid Test Scores data are suppressed OR there were fewer than 30 tested students enrolled on BEDS day and during the test administration period, so the PI, EAMO, and



Safe Harbor Target data are suppressed.

\*The percentage of students tested in the current year fell below 95 percent, so the numbers of enrolled and tested students in the current year and previous year were combined to provide the school/district with another opportunity to meet the participation rate criterion.

† Includes former students with disabilities because the number of students with disabilities in the current year is equal to or greater than 30.

# Elementary/Middle-Level Mathematics Results for Accountability

All accountability groups made AYP: YES

Student Group	Made AYP	Tested 95%	Students Enrolled During the Test Administration Period	Percent of Enrolled Students with Valid Test Scores	PI >= EAMO or Safe Harbor Target	Tested Students Enrolled on BEDS Day	PI	EAMO	Safe Harbor Target
All Students	✓	✓	806	95%	✓	754	137	82	82
American Indian or Alaska Native	—	—	2	—	—	2	—	—	—
Black or African American	—	—	20	—	—	20	—	—	—
Hispanic or Latino	✓	✓	104	95%	✓	96	107	62	62
Asian or Native Hawaiian/Other Pacific Islander	—	—	21	—	—	17	—	—	—
White	✓	✓	658	95%	✓	618	141	101	101
Multiracial	—	—	1	—	—	1	—	—	—
Students With Disabilities	✓	✓	218*	95%*	✓	107†	55†	39	39
Limited English Proficient	—	—	9	—	—	9	—	—	—
Economically Disadvantaged	✓	✓	272*	96%*	✓	126	112	63	63

Results for the following groups are NOT used to determine AYP.

Student Group	Students Enrolled During the Test Administration Period	Percent of Enrolled Students with Valid Test Scores	Tested Students Enrolled on BEDS Day	PI
Not American Indian or Alaska Native	804	95%	752	137
Not Black or African American	786	95%	734	137
Not Hispanic or Latino	702	95%	658	142
Not Asian or Native Hawaiian/Other Pacific Islander	785	95%	737	137
Not White	148	95%	136	120
Not Multiracial	805	95%	753	137
General Education	692	95%	651	151
English Proficient	797	95%	745	139
Not Economically Disadvantaged	672	95%	628	143
Male	824*	96%*	386	137
Female	391	95%	368	138
Migrant	0	—	0	—
Not Migrant	806	95%	754	137

✓ Yes

✗ No

— There were fewer than 40 students enrolled during the test administration period, so the Percent of Enrolled Students with Valid Test Scores data are suppressed OR there were fewer than 30 tested students enrolled on BEDS day and during the test administration period, so the PI, EAMO, and

Safe Harbor Target data are suppressed.

\*The percentage of students tested in the current year fell below 95 percent, so the numbers of enrolled and tested students in the current year and previous year were combined to provide the school/district with another opportunity to meet the participation rate criterion.

† Includes former students with disabilities because the number of students with disabilities in the current year is equal to or greater than 30.

# Elementary/Middle-Level Science Results for Accountability

All accountability groups made AYP: YES

Student Group	Made AYP	Tested 80%	Students Enrolled During the Test Administration Period	Percent of Enrolled Students with Valid Test Scores	PI >= EAMO or Progress Target	Tested Students Enrolled on BEDS Day	PI	EAMO	Progress Target
All Students	✓	✓	272	98%	✓	263	187	176	176
American Indian or Alaska Native	—	—	0	—	—	0	—	—	—
Black or African American	—	—	8	—	—	8	—	—	—
Hispanic or Latino	✓	—	32	—	✓	30	160	155	155
Asian or Native Hawaiian/Other Pacific Islander	—	—	6	—	—	5	—	—	—
White	✓	✓	226	98%	✓	220	192	185	185
Multiracial	—	—	0	—	—	0	—	—	—
Students With Disabilities	✓	✓	44	95%	✓	43†	156†	147	147
Limited English Proficient	—	—	4	—	—	4	—	—	—
Economically Disadvantaged	✓	—	39	—	✓	38	174	158	158

Results for the following groups are NOT used to determine AYP.

Student Group	Students Enrolled During the Test Administration Period	Percent of Enrolled Students with Valid Test Scores	Tested Students Enrolled on BEDS Day	PI
Not American Indian or Alaska Native	272	98%	263	187
Not Black or African American	264	98%	255	188
Not Hispanic or Latino	240	98%	233	191
Not Asian or Native Hawaiian/Other Pacific Islander	266	98%	258	188
Not White	46	98%	43	163
Not Multiracial	272	98%	263	187
General Education	228	99%	221	194
English Proficient	268	98%	259	188
Not Economically Disadvantaged	233	98%	225	190
Male	147	97%	141	183
Female	125	99%	122	193
Migrant	0	—	0	—
Not Migrant	272	98%	263	187

✓ Yes

✗ No

— There were fewer than 40 students enrolled during the test administration period, so the Percent of Enrolled Students with Valid Test Scores data are suppressed OR there were fewer than 30 tested students enrolled on BEDS day and during the test administration period, so the PI, EAMO, and

Progress Target data are suppressed.

† Includes former students with disabilities because the number of students with disabilities in the current year is equal to or greater than 30.

---

## Secondary-Level English Language Arts Results for Accountability

All accountability groups made AYP: NO

Student Group	Made AYP	Tested 95%	12th Graders	Percent of 12th Graders with Valid Test Scores	PI >= EAMO or Safe Harbor Target	2010 Accountability Cohort Members	PI	EAMO	Safe Harbor Target
All Students	✓	✓	161	98%	✓	162	161	158	158
American Indian or Alaska Native	—	—	0	—	—	0	—	—	—
Black or African American	—	—	9	—	—	9	—	—	—
Hispanic or Latino	—	—	15	—	—	15	—	—	—
Asian or Native Hawaiian/Other Pacific Islander	—	—	3	—	—	2	—	—	—
White	✗	✓	134	99%	✗	136	163	169	169
Multiracial	—	—	0	—	—	0	—	—	—
Students With Disabilities	—	—	25	—	—	24	—	—	—
Limited English Proficient	—	—	0	—	—	0	—	—	—
Economically Disadvantaged	—	—	18	—	—	19	—	—	—

Results for the following groups are NOT used to determine AYP.

Student Group	12th Graders	Percent of 12th Graders with Valid Test Scores	2010 Accountability Cohort Members	PI
Not American Indian or Alaska Native	161	98%	162	161
Not Black or African American	152	97%	153	161
Not Hispanic or Latino	146	98%	147	163
Not Asian or Native Hawaiian/Other Pacific Islander	158	98%	160	161
Not White	27	—	26	—
Not Multiracial	161	98%	162	161
General Education	136	99%	138	174
English Proficient	161	98%	162	161
Not Economically Disadvantaged	143	98%	143	166
Male	89	98%	92	149
Female	72	97%	70	177
Migrant	0	—	0	—
Not Migrant	161	98%	162	161

✓ Yes

✗ No

— There were fewer than 40 12th graders, so the Percent of 12th Graders with Valid Test Scores data are suppressed OR there were fewer than 30 students in the 2010 accountability cohort, so PI, EAMO, and Safe Harbor Target data are suppressed.



# Secondary-Level Mathematics Results for Accountability

All accountability groups made AYP: YES

Student Group	Made AYP	Tested 95%	12th Graders	Percent of 12th Graders with Valid Test Scores	PI >= EAMO or Safe Harbor Target	2010 Accountability Cohort Members	PI	EAMO	Safe Harbor Target
All Students	✓	✓	161	98%	✓	162	153	140	140
American Indian or Alaska Native	—	—	0	—	—	0	—	—	—
Black or African American	—	—	9	—	—	9	—	—	—
Hispanic or Latino	—	—	15	—	—	15	—	—	—
Asian or Native Hawaiian/Other Pacific Islander	—	—	3	—	—	2	—	—	—
White	✓	✓	134	99%	✓	136	158	153	153
Multiracial	—	—	0	—	—	0	—	—	—
Students With Disabilities	—	—	25	—	—	24	—	—	—
Limited English Proficient	—	—	0	—	—	0	—	—	—
Economically Disadvantaged	—	—	18	—	—	19	—	—	—

Results for the following groups are NOT used to determine AYP.

Student Group	12th Graders	Percent of 12th Graders with Valid Test Scores	2010 Accountability Cohort Members	PI
Not American Indian or Alaska Native	161	98%	162	153
Not Black or African American	152	98%	153	154
Not Hispanic or Latino	146	98%	147	156
Not Asian or Native Hawaiian/Other Pacific Islander	158	99%	160	154
Not White	27	—	26	—
Not Multiracial	161	98%	162	153
General Education	136	99%	138	165
English Proficient	161	98%	162	153
Not Economically Disadvantaged	143	98%	143	159
Male	89	99%	92	142
Female	72	97%	70	167
Migrant	0	—	0	—
Not Migrant	161	98%	162	153

✓ Yes

✗ No

— There were fewer than 40 12th graders, so the Percent of 12th Graders with Valid Test Scores data are suppressed OR there were fewer than 30 students in the 2010 accountability cohort, so PI, EAMO, and Safe Harbor Target data are suppressed.





## Unweighted Combined ELA and Math PIs

Student Group	Elementary/ Middle-Level ELA PI	Elementary/ Middle-Level Math PI	Secondary-Level ELA PI	Secondary-Level Math PI	Unweighted Combined PI
All Students	111	137	161	153	141
American Indian or Alaska Native	—	—	—	—	—
Black or African American	—	—	—	—	—
Hispanic or Latino	84	107	—	—	96
Asian or Native Hawaiian/Other Pacific Islander	—	—	—	—	—
White	115	141	163	158	144
Multiracial	—	—	—	—	—
Students With Disabilities	39	55	—	—	47
Limited English Proficient	—	—	—	—	—
Economically Disadvantaged	84	112	—	—	98

— There were not enough students to determine a Performance Index.

# Overall Graduation Rate for Accountability

All accountability groups made AYP: YES

Student Group	Made AYP
All Students	✓
American Indian or Alaska Native	—
Black or African American	—
Hispanic or Latino	—
Asian or Native Hawaiian/Other Pacific Islander	—
White	✓
Multiracial	—
Students With Disabilities	—
Limited English Proficient	—
Economically Disadvantaged	—

✓ Made AYP

✗ Did not make AYP

— There were not enough students to make an AYP determination.

## Four-Year Graduation-Rate Total Cohort for Accountability

Student Group	Met Graduation-Rate Criterion	2009 Four-Year Graduation-Rate Total Cohort	Graduation Rate	State Standard	Progress Target
All Students	✓	163	92%	80%	80%
American Indian or Alaska Native	—	0	—	—	—
Black or African American	—	1	—	—	—
Hispanic or Latino	—	23	—	—	—
Asian or Native Hawaiian/Other Pacific Islander	—	8	—	—	—
White	✓	131	93%	80%	80%
Multiracial	—	0	—	—	—
Students With Disabilities	—	11	—	—	—
Limited English Proficient	—	3	—	—	—
Economically Disadvantaged	—	18	—	—	—

✓ Graduation rate is equal to or greater than the State Standard or the group's Progress Target.

✗ Graduation rate is less than the State Standard and the group's Progress Target.

— There were fewer than 30 students in the cohort.

## Five-Year Graduation-Rate Total Cohort for Accountability

Student Group	Met Graduation-Rate Criterion	2008 Five-Year Graduation-Rate Total Cohort	Graduation Rate	State Standard	Progress Target
All Students	✓	142	89%	80%	80%
American Indian or Alaska Native	—	0	—	—	—
Black or African American	—	1	—	—	—
Hispanic or Latino	—	20	—	—	—
Asian or Native Hawaiian/Other Pacific Islander	—	5	—	—	—
White	✓	115	90%	80%	80%
Multiracial	—	1	—	—	—
Students With Disabilities	—	18	—	—	—
Limited English Proficient	—	1	—	—	—
Economically Disadvantaged	—	7	—	—	—

✓ Graduation rate is equal to or greater than the State Standard or the group's Progress Target.

✗ Graduation rate is less than the State Standard and the group's Progress Target.

— There were fewer than 30 students in the cohort.

## Graduation Rates for Non-AYP Groups for Accountability

Results for the following groups are NOT used to determine AYP.

Student Group	Four-Year Graduation-Rate Total Cohort		Five-Year Graduation-Rate Total Cohort	
	2009 Four-Year Graduation-Rate Total Cohort	Graduation Rate	2008 Five-Year Graduation-Rate Total Cohort	Graduation Rate
Not American Indian or Alaska Native	163	92%	142	89%
Not Black or African American	162	92%	141	89%
Not Hispanic or Latino	140	92%	122	89%
Not Asian or Native Hawaiian/Other Pacific Islander	155	93%	137	90%
Not White	32	88%	27	—
Not Multiracial	163	92%	141	90%
General Education	152	95%	124	94%
English Proficient	160	93%	141	89%
Not Economically Disadvantaged	145	94%	135	90%
Male	86	91%	63	87%
Female	77	94%	79	91%
Migrant	0	—	0	—
Not Migrant	163	92%	142	89%

— There were fewer than 30 students in the cohort.

## Graduation Rates for Regents with Advanced Designation and CTE Endorsement for Accountability

Percentage of 2009 Graduation-Rate Total Cohort members who graduated as of August 31, 2013 with:

Regents Diploma with an Advanced Designation (This District)	Regents Diploma with an Advanced Designation (Statewide)	Percentage in This District Exceeded Statewide
52%	31%	YES