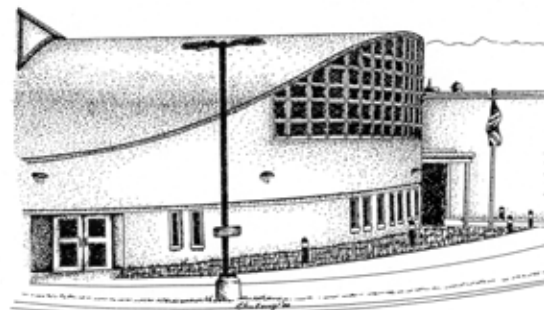
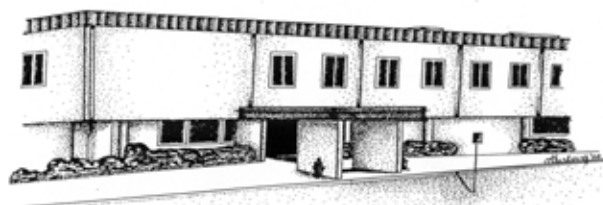


# Putnam Valley CSD

2010-11 Budget Hearing  
06-May-2010

---

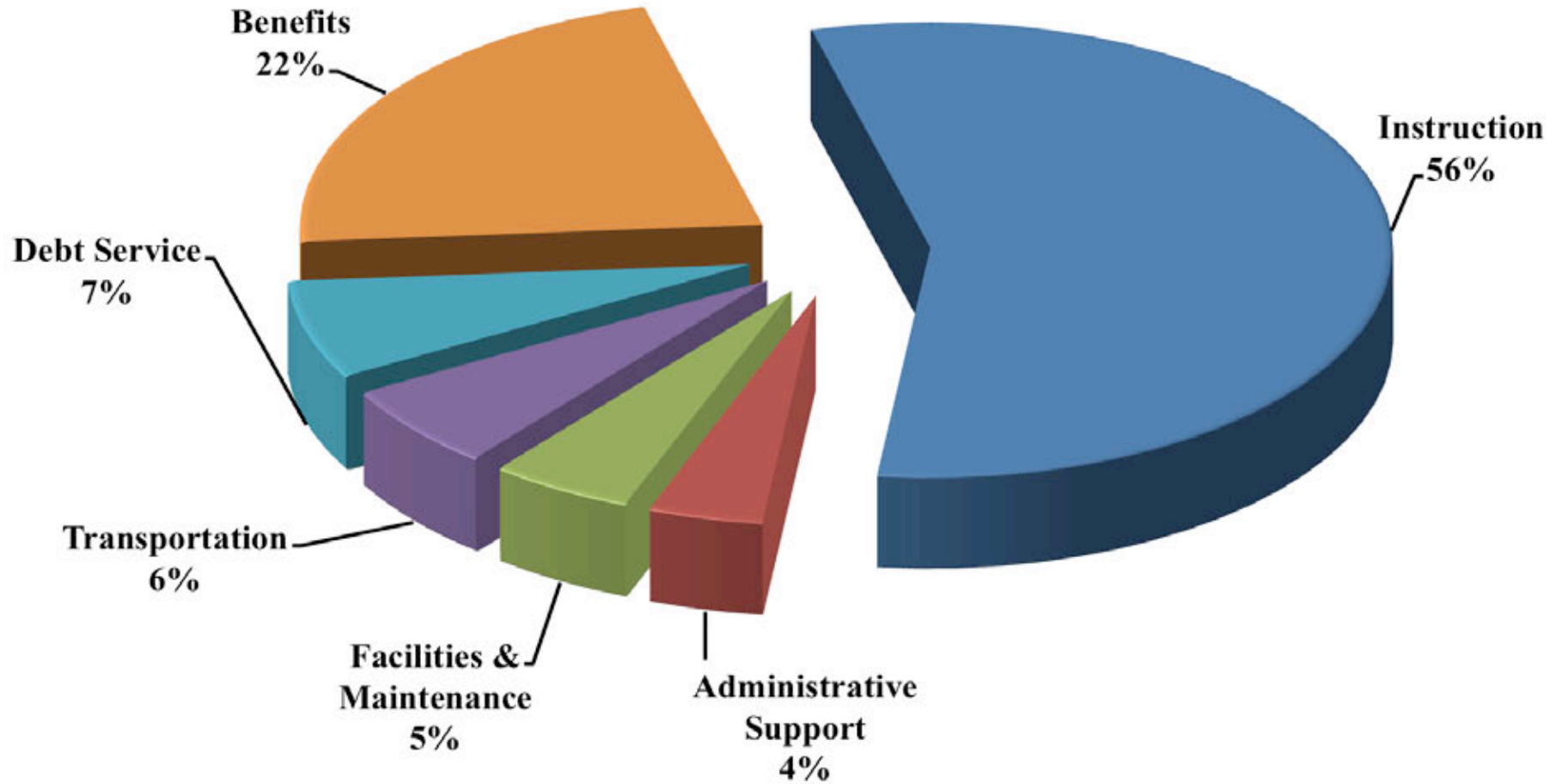


# Proposed Budget Summary:

---

	<u>Adjusted</u> <u>2009-10</u>	<u>Proposed</u> <u>2010-11</u>	<u>Change</u>
Total Expenditures	43,528,963	43,860,709	331,746 <b>+ 0.76%</b>
Less Appropriated Fund Balance	350,000	1,100,000	750,000
Less State & Federal Sources	9,067,178	8,391,593	- 675,585
Less Local Non-Tax Revenues	605,388	583,837	- 21,551
Tax Levy	33,506,397	33,785,279	278,882 <b>+ 0.83%</b>

# Budget Summary



# Budget Summary

---

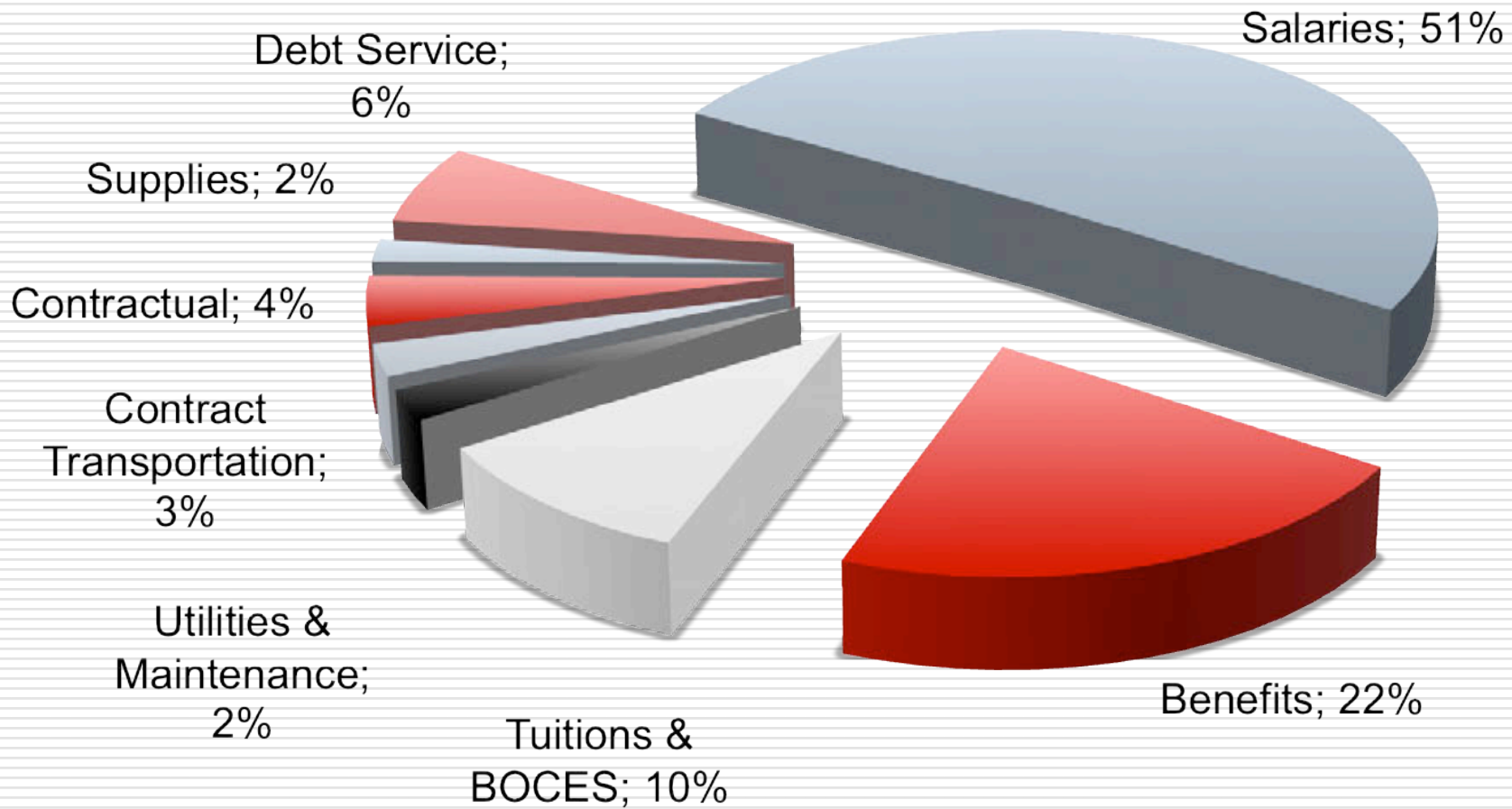
<b>Instructional Services</b>	<b>Adjusted <u>2009-10</u></b>	<b>Proposed <u>2010-11</u></b>	<b><u>Change</u></b>
School Administration & Staff Development	1,741,367	1,726,048	-15,319
Instructional Programs	19,333,289	19,165,741	-167,548
Instructional Media	1,583,231	1,490,673	-92,558
Guidance	534,856	505,711	-29,145
Health / Psychological / Pupil Services	793,385	805,997	12,612
Clubs & After School Activities	212,748	212,748	0
Interscholastic Athletics	886,622	812,617	-74,005
<b>Total Instructional Services</b>	<b>25,085,498</b>	<b>24,719,535</b>	<b>-365,963</b>

# Budget Summary

---

	<b>Adjusted</b>	<b>Proposed</b>	
	<b><u>2009-10</u></b>	<b><u>2010-11</u></b>	<b><u>Change</u></b>
<b>Administrative Support Services</b>	<b>1,862,260</b>	<b>1,853,064</b>	<b>-9,196</b>
<b>Facilities &amp; Maintenance</b>	<b>2,413,503</b>	<b>2,382,558</b>	<b>-30,945</b>
<b>Transportation Services</b>	<b>2,519,751</b>	<b>2,575,283</b>	<b>55,532</b>
<b>Interfund Transfers &amp; Debt Service</b>	<b>3,021,342</b>	<b>2,847,671</b>	<b>-173,671</b>
<b>Benefits</b>	<b>8,626,609</b>	<b>9,482,598</b>	<b>855,989</b>
<b>Total Expenditures</b>	<b>43,528,963</b>	<b>43,860,709</b>	<b>331,746</b> <b>+ 0.76%</b>

# Budget Summary



# Budgets: Past Four Years

## Percentage Increases

<b><u>BUDGET SUMMARIES</u></b>	<b><u>2010-11</u></b>	<b><u>2009-10</u></b>	<b><u>2008-09</u></b>	<b><u>2007-08</u></b>
Salaries	-1.46%	2.00%	4.86%	5.70%
Benefits	9.92%	4.99%	4.03%	7.80%
Tuitions and BOCES	1.37%	0.03%	2.92%	6.41%
Utilities, Heating Oil, Bus Fuel	0.00%	-8.59%	18.31%	-0.52%
Contract Transportation	0.00%	2.97%	3.48%	3.50%
Contractual	-2.08%	2.56%	2.53%	3.00%
Supplies	-3.64%	-2.08%	0.14%	0.30%
Debt Service	-5.75%	0.00%	0.91%	0.93%
<b>TOTAL EXPENSE</b>	0.76%	1.95%	4.27%	5.33%

# Tax Levy Changes

---

	<u>\$ Change</u>	<u>% Change</u>
2010-11	278,882	0.83%
2009-10	843,302	2.58%
2008-09	830,589	2.61%
2007-08	1,016,234	3.30%



# VOTE: Tuesday May 18, 2010

---

- Proposition One:** To vote on the annual budget of the School District for the fiscal year 2010-11 and to authorize the requisite portion thereof to be raised by taxation on the taxable property of the District.
  
- To elect two (2) members of the Board of Education, for a term of three (3) years, commencing July 1, 2010 and expiring on June 30, 2013.

**VOTE: Tuesday May 18, 2010**

---

**Budget Vote and Election**

**Tuesday, May 18, 2010**

**Putnam Valley Elementary School Cafeteria**

**171 Oscawana Lake Rd**

**Polls open between 6:00 a.m. and 9:00 p.m.**

# Questions ?

---

