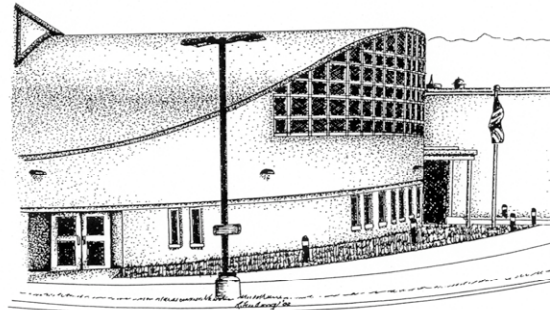
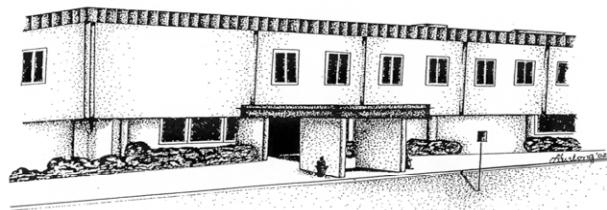
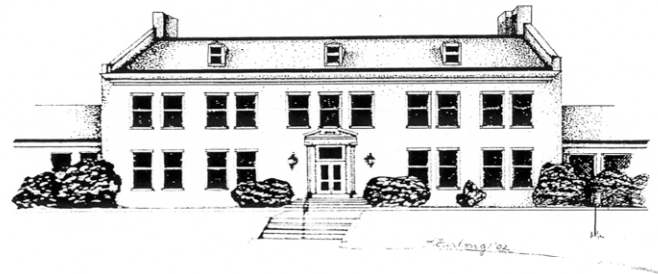


Putnam Valley CSD

Adopted Proposed Budget 2009-10
April 16, 2009



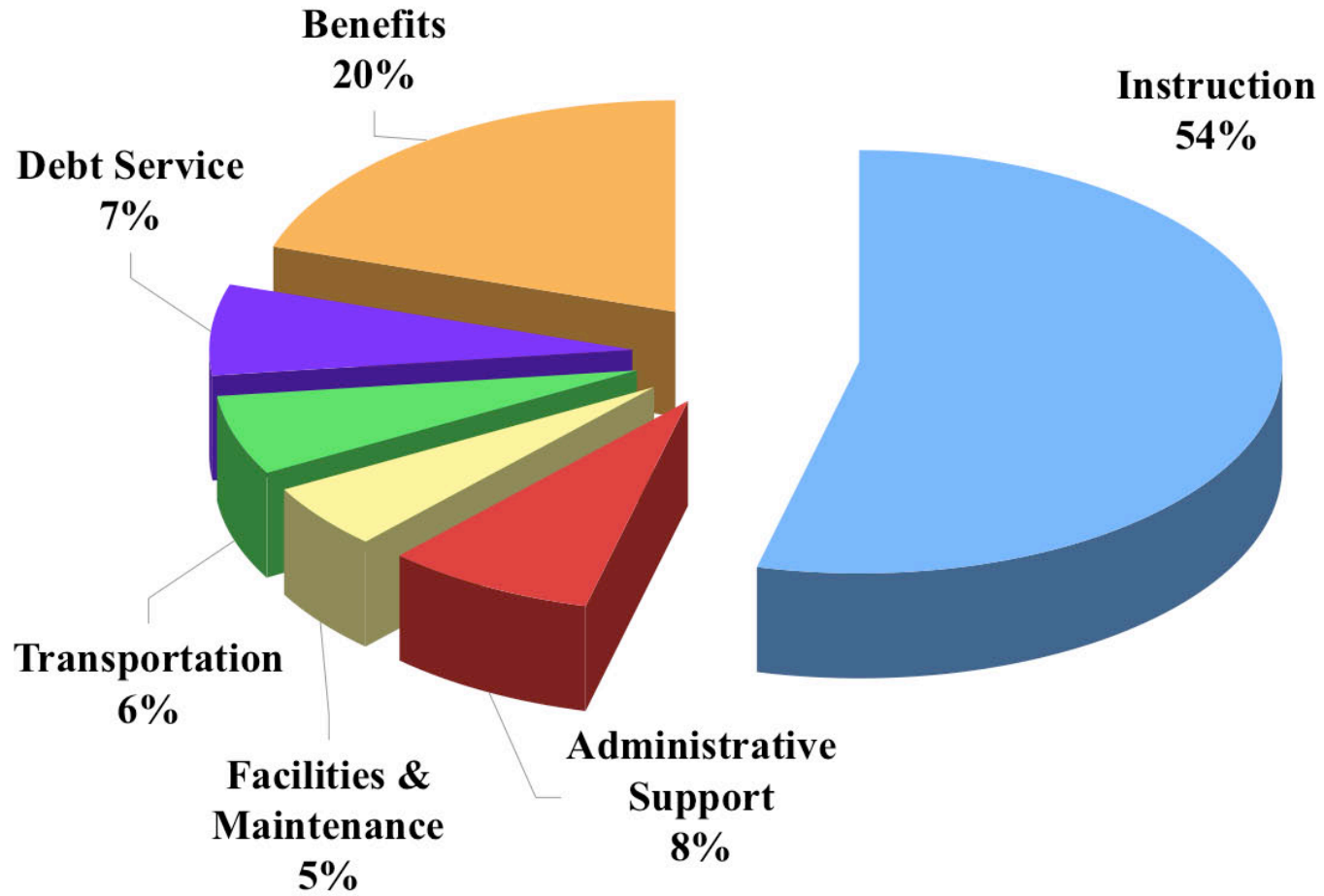
Budget Summary

Instructional Services	Adjusted <u>2008-09</u>	Proposed <u>2009-10</u>	<u>Change</u>
Curriculum Development	269,034	232,026	- 37,008
Regular School Programs	12,630,416	13,013,321	382,905
Programs for Students with Disabilities	6,335,111	6,299,816	- 35,295
Instructional Media	1,519,352	1,527,371	8,019
Guidance	531,824	534,856	3,032
Health / Psychological / Pupil Services	748,317	774,845	26,528
Clubs & After School Activities	222,439	212,748	- 9,691
Interscholastic Athletics	852,901	873,308	20,407
Total Instructional Services	23,109,394	23,468,291	358,897

Budget Summary

	Adjusted	Proposed	
	<u>2008-09</u>	<u>2009-10</u>	<u>Change</u>
Administrative Support Services	3,405,018	3,408,205	3,187
Facilities & Maintenance	2,440,584	2,459,532	18,948
Transportation Services			
District Operated Transportation	1,404,280	1,387,235	-17,045
Contract Transportation	1,097,842	1,130,777	32,935
Total Transportation Services	2,502,122	2,518,012	15,890
Interfund Transfers: Debt Service	3,021,427	3,021,342	- 85
Benefits	8,216,693	8,653,581	436,888
Total Expenditures	42,695,238	43,528,963	833,725 + 1.95%

Budget Summary



Budget Summary:

	Adjusted <u>2008-09</u>	Proposed <u>2009-10</u>	<u>Change</u>
Total Expenditures	42,695,238	43,528,963	833,725 +1.95%
Less Appropriated Fund Balance	250,000	350,000	100,000
Less State Aid & Medicare	8,993,042	9,067,178	74,136
Less Local Non-Tax Revenues	789,100	589,388	- 199,712
Tax Levy	32,663,096	33,506,397	843,301 +2.58%

VOTE: Tuesday May 19, 2009

- **Proposition One:** To vote on the annual budget of the School District for the fiscal year 2009-10 and to authorize the requisite portion thereof to be raised by taxation on the taxable property of the District.

 - To elect two (2) members of the Board of Education, for a term of three (3) years, commencing July 1, 2009 and expiring on June 30, 2012.
-

Reminder
VOTE: Tuesday May 19, 2009

Budget Vote and Election

Tuesday, May 19, 2009

Putnam Valley HS
146 Peekskill Hollow Rd

Polls open between 6:00 a.m. and 9:00 p.m.